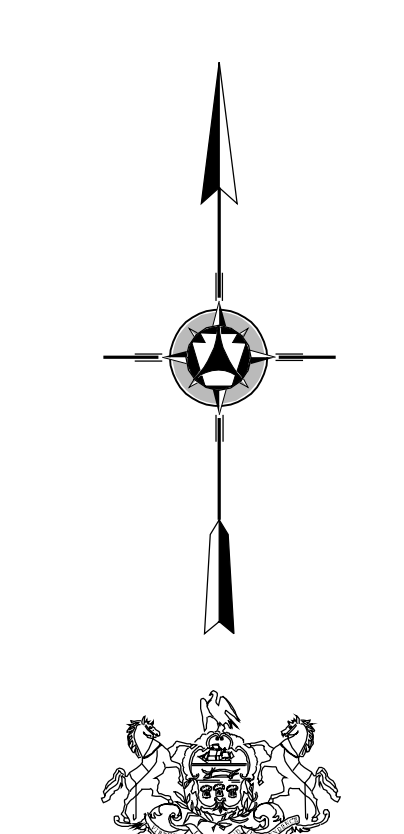
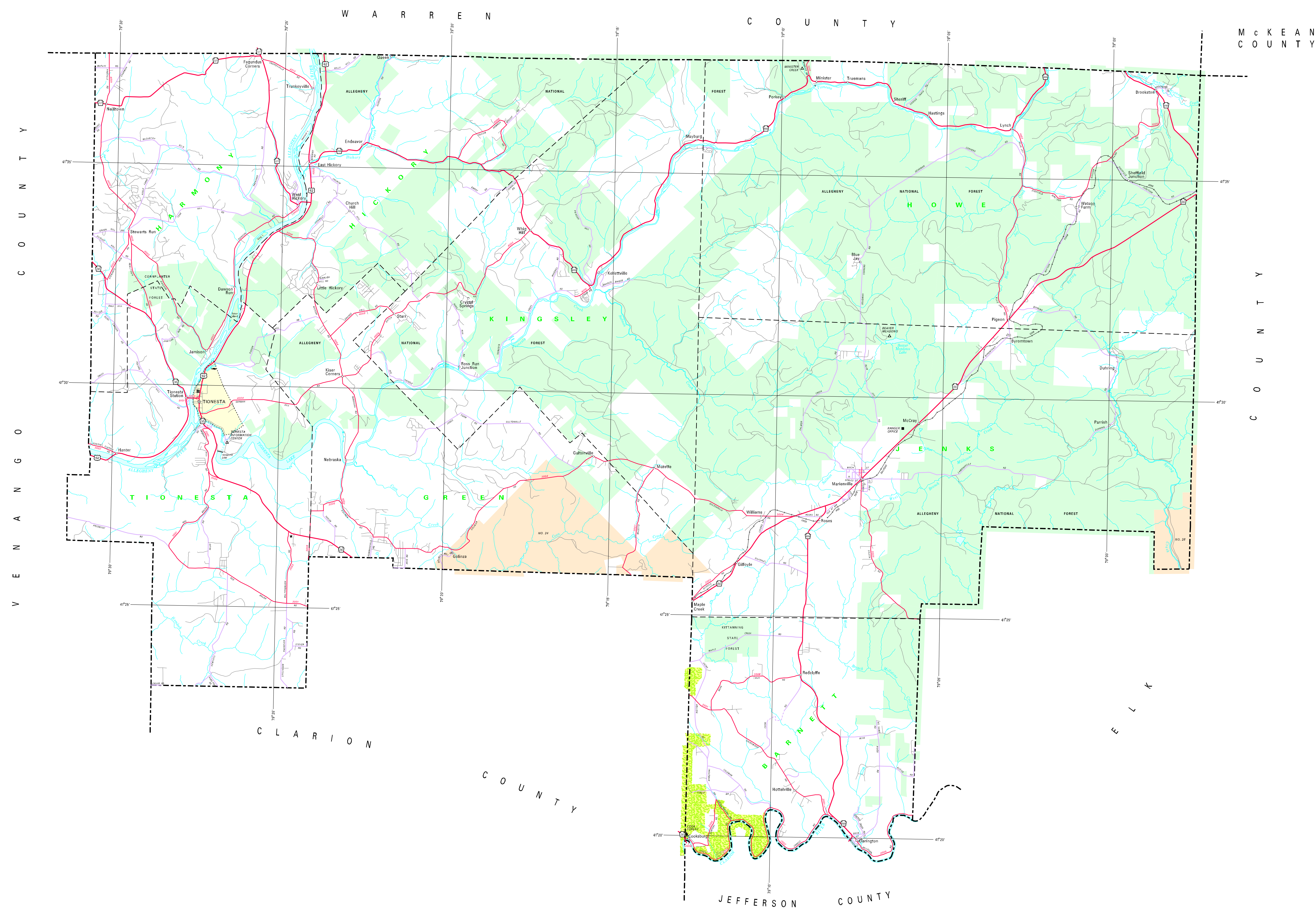
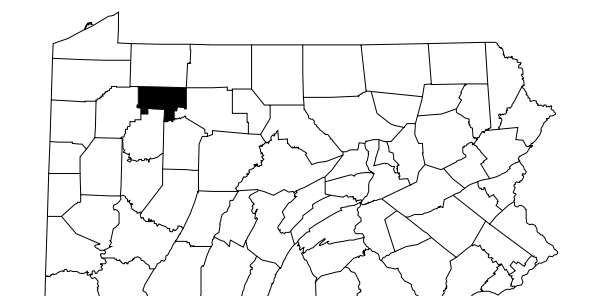
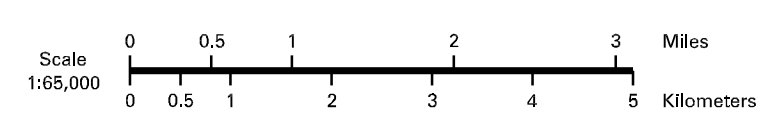


- LEGEND**
- EXPRESSWAY - ACCESS FULLY CONTROLLED
 - TRUCK ROUTE
 - REMAINING STATE ROAD AND ROUTE
 - STATE MAINTAINED BRIDGE
 - TOWNSHIP ROAD
 - TOWNSHIP ROAD (IMPROVED / UNIMPROVED)
 - OTHER ROAD
 - INTERSTATE BRIDGE NUMBER
 - INTERSTATE TRAFFIC ROUTE
 - UNITED STATES TRAFFIC ROUTE
 - PENNSYLVANIA TRAFFIC ROUTE
 - RAILROAD IN SERVICE
 - RAILROAD ABANDONED TRACK REPAIRED
 - STATE LINE
 - COUNTY LINE
 - TOWNSHIP LINE
 - INCORPORATED CITY
 - INCORPORATED BOROUGH
 - STATE CAPITAL
 - COUNTY SEAT
 - OTHER COMMUNITIES
 - COLLEGE OR UNIVERSITY
 - STATE HOUSE BLDG.
 - STATE ADMINISTERED HISTORIC PROPERTY
 - FEDERAL STATE HISTORIC MONUMENT
 - FISH DOT FACILITY
 - POINTS OF INTEREST
 - WORLD WAR II MONUMENT
 - REST AREA AND COUNTY FACILITY
 - WILSON CENTER AND COUNTY FACILITY
 - STATE FISH HATCHERY
 - STATE FOREST NATIONAL AREA
 - STATE FOREST PLANNING AREA
 - FEDERAL RECREATION SITE
 - STATE PARK LAND - HEADQUARTERS
 - STATE GAZE LAND AND NUMBER
 - STATE AND FEDERAL FOREST LAND
 - FEDERAL PARK / RECREATION LAND
 - FEDERAL RESERVATION



1995
GENERAL HIGHWAY MAP
FOREST COUNTY
PENNSYLVANIA

PREPARED BY THE
 PENNSYLVANIA DEPARTMENT OF TRANSPORTATION
 CARTOGRAPHIC INFORMATION DIVISION
 IN COOPERATION WITH THE
 U.S. DEPARTMENT OF TRANSPORTATION
 FEDERAL HIGHWAY ADMINISTRATION



POPULATION OF COUNTY 1990 Census.....4,822
 AREA OF COUNTY (SQ. MI.).....423
 (SQ. KM.).....170
 POLYCONIC PROJECTION

COPIES OF THIS MAP ARE AVAILABLE AT NOMINAL COST
 CONTACT:
 PENNSYLVANIA DEPARTMENT OF TRANSPORTATION
 DISTRIBUTION SERVICES UNIT
 P.O. BOX 2022
 HARRISBURG, PENNSYLVANIA 17003
 TELEPHONE (717) 797-6740

USERS NOTING ERRORS OR OMISSIONS ON THIS MAP
 ARE URGED TO REPORT THEM TO
 PENNSYLVANIA DEPARTMENT OF TRANSPORTATION
 CARTOGRAPHIC INFORMATION DIVISION
 900 MARKET STREET - 6TH FLOOR
 HARRISBURG, PENNSYLVANIA 17101 - 5000

COPYRIGHT - COMMONWEALTH OF PENNSYLVANIA
 DEPARTMENT OF GENERAL SERVICES