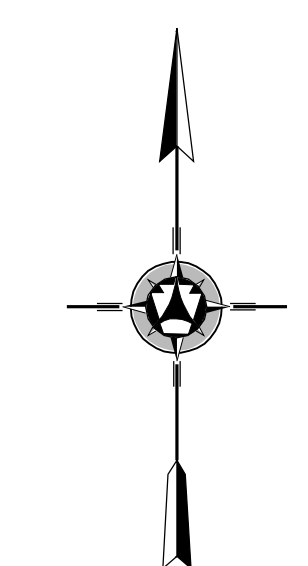
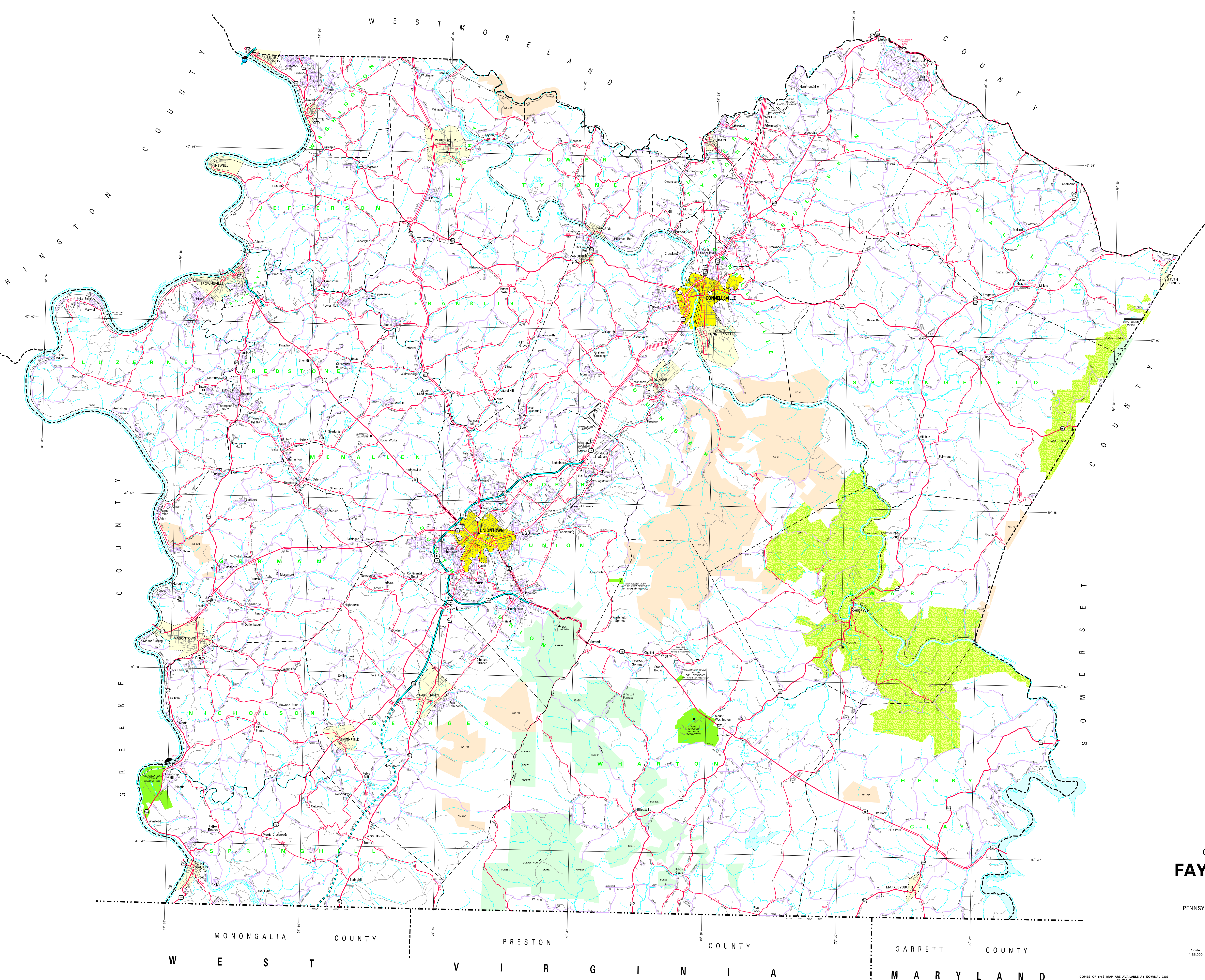


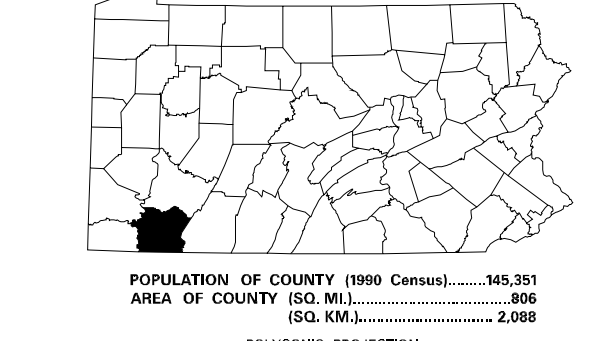
- LEGEND**
- EXPRESSWAY - ACCESS FULLY CONTROLLED
 - MULTILANE HIGHWAY
 - TRUNK HIGHWAY
 - REMAINING STATE ROAD AND HIGHWAY
 - STATE MAINTAINED BRIDGE
 - TOWNSHIP ROAD
 - TOWNSHIP ROAD (PAVED UNPAVED)
 - OTHER ROAD
 - INTERSTATE INTERCHANGE
 - UNITED STATES TRAIL ROUTE
 - FEDERAL VIAL TRAIL ROUTE
 - RAILROAD BY SEASONS
 - RAILROAD ABANDONED TRACK REMAINS
 - STATE LINE
 - COUNTY LINE
 - TOWNSHIP LINE
 - INCORPORATED BOROUGH
 - STATE CAPITAL
 - COUNTY SEAT
 - OTHER COMMUNITIES
 - COLLEGE OR UNIVERSITY
 - STATE POLICE FACILITY
 - STATE ADMINISTERED HISTORIC PROPERTY
 - FEDERAL STATE INSTITUTIONS
 - HOME SITES TRAILS
 - HELIPODE
 - REST AREA AND COMFORT FACILITY
 - RECREATION CENTER AND COMFORT FACILITY
 - STATE FISH HATCHERY
 - STATE FOREST NATURAL AREA
 - STATE FOREST PLANTING AREA
 - FEDERAL RECREATION SITE
 - STATE PARK LAND - HEADQUARTERS
 - STATE GAME LAND AND NUMBER
 - STATE AND FEDERAL FOREST LAND
 - FEDERAL FOREST RECREATION LAND
 - FEDERAL RECREATION



1996
GENERAL HIGHWAY MAP
FAYETTE COUNTY
PENNSYLVANIA

PREPARED BY THE
 PENNSYLVANIA DEPARTMENT OF TRANSPORTATION
 CARTOGRAPHIC INFORMATION DIVISION
 IN COOPERATION WITH THE
 U.S. DEPARTMENT OF TRANSPORTATION
 FEDERAL HIGHWAY ADMINISTRATION

Scale 0 0.5 1 2 3 Miles
 1:65,000 0 0.5 1 2 3 4 5 Kilometers



COPIES OF THIS MAP ARE AVAILABLE AT NOMINAL COST
 CONTACT:
 PENNSYLVANIA DEPARTMENT OF TRANSPORTATION
 CARTOGRAPHIC INFORMATION DIVISION
 100 SOUTH 10TH STREET
 HARRISBURG, PENNSYLVANIA 17103
 TELEPHONE: (717) 787-2746

USERS NOTING ERRORS OR OMISSIONS ON THIS MAP
 ARE URGED TO REPORT THEM TO:
 PENNSYLVANIA DEPARTMENT OF TRANSPORTATION
 CARTOGRAPHIC INFORMATION DIVISION
 100 SOUTH 10TH STREET
 HARRISBURG, PENNSYLVANIA 17103

POPULATION OF COUNTY (1990 Census).....34,191
 AREA OF COUNTY (SQ. MI.).....2,888
 POLYCONIC PROJECTION