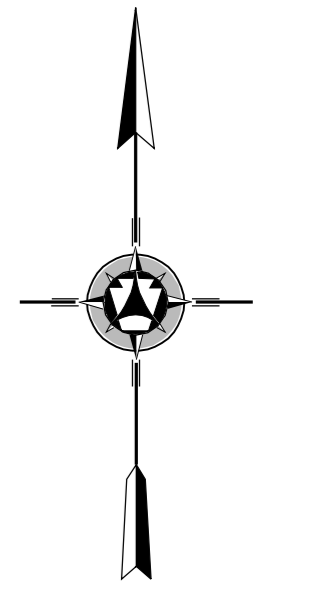
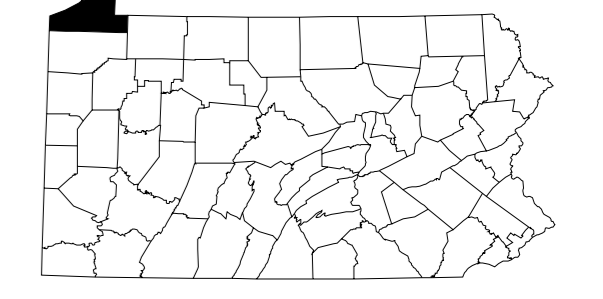
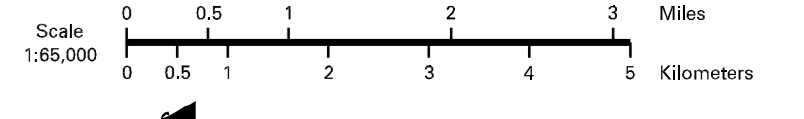


LEGEND	
EXPRESSWAY - ACCESS FULLY CONTROLLED	
MULTI-LANE HIGHWAY	
TRUNK ROUTE	
REMAINING STATE ROAD AND CENTER	
STATE MAINTAINED BRIDGE	
TOWNSHIP ROAD	
TOWNSHIP ROAD (FRAGILE UNIMPROVED)	
OTHER ROAD	
INTERSTATE HIGHWAY NUMBER	
UNITED STATES TRAFFIC ROUTE	
PENNSYLVANIA TRAFFIC ROUTE	
RAILROAD BY SERVICE	
RAILROAD ABANDONED TRACK RETAINED	
STATE LINE	
COUNTY LINE	
TOWNSHIP LINE	
INCORPORATED CITY	
INCORPORATED BOROUGH	
STATE CAPITAL	
COUNTY SEAT	
OTHER COMMUNITIES	
COLLEGE OR UNIVERSITY	
STATE VEHICLE FACILITY	
GEOMETRY	
STATE ADMINISTERED WETLAND PROPERTY	
FEDERAL STATE WETLANDS	
PRIME SOIL FACILITY	
PORTS OF INTEREST	
RAILROAD TRACK	
RESORT	
POW AREA AND CONDUIT FACILITY	
WELCOME CENTER AND CONDUIT FACILITY	
STATE FISH INTEREST	
STATE FISHED WETLAND AREA	
STATE FOREST PLANT AREA	
FEDERAL WETLANDS	
STATE PARK LAND - HEADQUARTERS	
STATE GAME LAND AND NUMBER	
STATE AND FEDERAL FOREST LAND	
FEDERAL PARK - PRESERVATION LAND	
FEDERAL STATE RESERVATION	

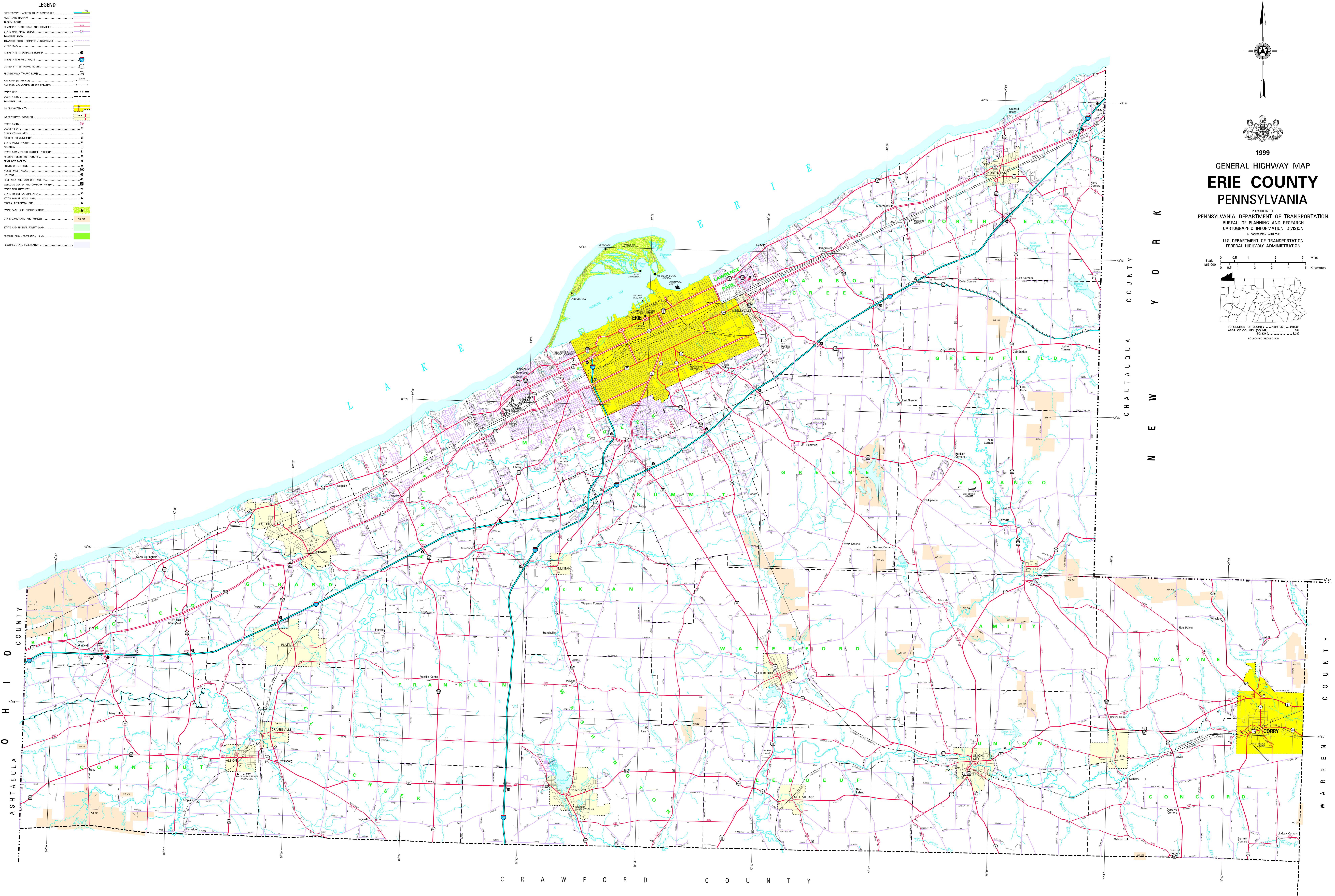


1999
GENERAL HIGHWAY MAP
ERIE COUNTY
PENNSYLVANIA

PREPARED BY THE
PENNSYLVANIA DEPARTMENT OF TRANSPORTATION
 BUREAU OF PLANNING AND RESEARCH
 CARTOGRAPHIC INFORMATION DIVISION
 IN COOPERATION WITH THE
U.S. DEPARTMENT OF TRANSPORTATION
 FEDERAL HIGHWAY ADMINISTRATION



POPULATION OF COUNTY 1997 EST. - 279,021
 AREA OF COUNTY (SQ. MI.) 660
 (SQ. KM.) 1,700
 POLYCONIC PROJECTION



COPIES OF THIS MAP ARE AVAILABLE AT NOMINAL COST
 CONTACT
 PENNSYLVANIA DEPARTMENT OF TRANSPORTATION
 DISTRIBUTION SERVICES UNIT
 HARRISBURG, PENNSYLVANIA 17105
 TELEPHONE: (717) 737-6246
 USERS NOTING ERRORS OR OMISSIONS ON THIS MAP
 ARE URGED TO REPORT THEM TO:
 PENNSYLVANIA DEPARTMENT OF TRANSPORTATION
 CARTOGRAPHIC INFORMATION DIVISION
 600 WALLACE STREET - 405 FLOOR
 HARRISBURG, PENNSYLVANIA 17105 - 1900