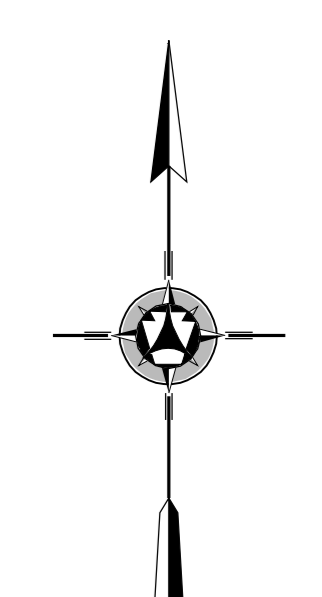
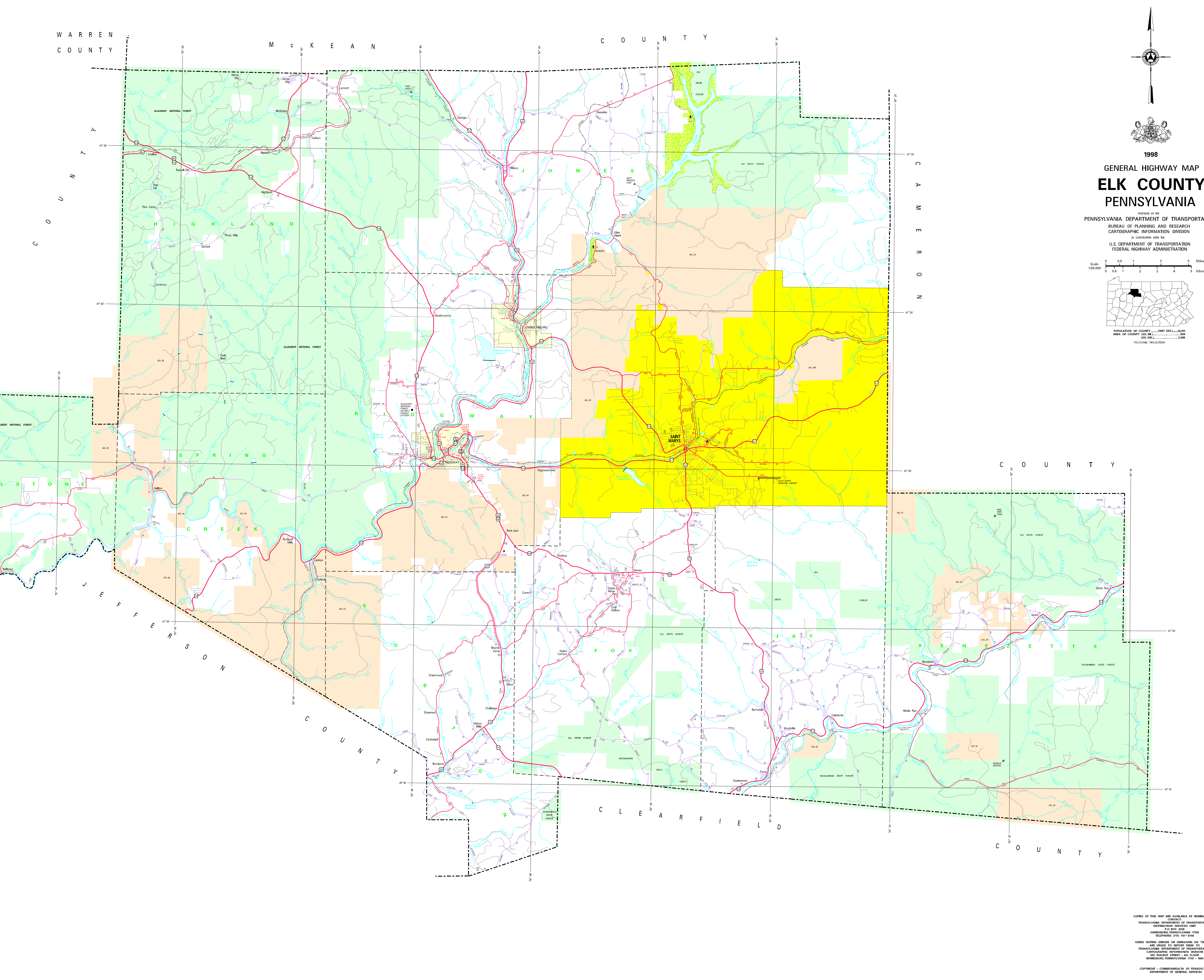


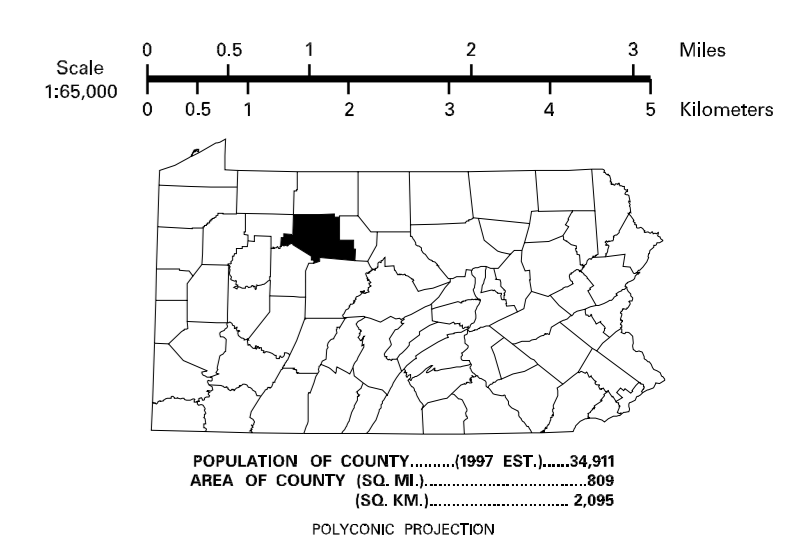
- LEGEND**
- EXPRESSWAY - ACCESS FULLY CONTROLLED
 - MULTILANE HIGHWAY
 - STATE ROAD
 - HOVING STATE ROAD AND CENTER
 - STATE HIGHWAY
 - TOWNSHIP ROAD (PAVED/UNPAVED)
 - OTHER ROAD
 - INTERSTATE INTERCHANGE NUMBER
 - INTERSTATE TRAFFIC ROUTE
 - UNITED STATES TRAFFIC ROUTE
 - PENNSYLVANIA TRAFFIC ROUTE
 - RAILROAD (BY SERVICE)
 - RAILROAD ABANDONED TRACE REMAINS
 - STATE LINE
 - COUNTY LINE
 - TOWNSHIP LINE
 - INCORPORATED CITY
 - INCORPORATED BOROUGH
 - STATE CAPITAL
 - COUNTY SEAT
 - CITY
 - OTHER COMMUNITIES
 - COLLEGE OR UNIVERSITY
 - STATE POLICE FACILITY
 - CENITARY
 - STATE ADMINISTERS HISTORIC PROPERTY
 - NATIONAL SPOTS HISTORIC
 - PENN DOT FACILITY
 - POWER OF PROCESS
 - TRUCK TRAIL
 - REPORT
 - RECYCLING AND COMPOST FACILITY
 - WELSH CENTER AND COMPOST FACILITY
 - STATE FISH HATCHERY
 - STATE FOREST NATURAL AREA
 - STATE FOREST FISCAL AREA
 - FEDERAL RECREATION ZONE
 - STATE PARK LAND (HEADQUARTERS)
 - STATE GAME LAND AND NUMBER
 - STATE AND FEDERAL FOREST LAND
 - FEDERAL PARK RECREATION LAND
 - FEDERAL STATE RESERVATION

WARREN COUNTY
MCKEAN COUNTY
CAMERON COUNTY
COOPER COUNTY
LEFFERSON COUNTY
CLEARFIELD COUNTY



1998
GENERAL HIGHWAY MAP
ELK COUNTY
PENNSYLVANIA

PREPARED BY THE
PENNSYLVANIA DEPARTMENT OF TRANSPORTATION
BUREAU OF PLANNING AND RESEARCH
CARTOGRAPHIC INFORMATION DIVISION
IN COOPERATION WITH THE
U.S. DEPARTMENT OF TRANSPORTATION
FEDERAL HIGHWAY ADMINISTRATION



COPIES OF THIS MAP ARE AVAILABLE AT NOMINAL COST
CONTRACT
PENNSYLVANIA DEPARTMENT OF TRANSPORTATION
DISTRIBUTION SERVICES UNIT
P.O. BOX 3028
HARRISBURG, PENNSYLVANIA 17105
TELEPHONE (717) 787-6748

USERS NOTING ERRORS OR OMISSIONS ON THIS MAP
ARE URGED TO REFER THEM TO
PENNSYLVANIA DEPARTMENT OF TRANSPORTATION
CARTOGRAPHIC INFORMATION DIVISION
505 HUNLEY STREET - 4th FLOOR
HARRISBURG, PENNSYLVANIA 17101 - 1900

COPYRIGHT - COMMONWEALTH OF PENNSYLVANIA
DEPARTMENT OF GENERAL SERVICES