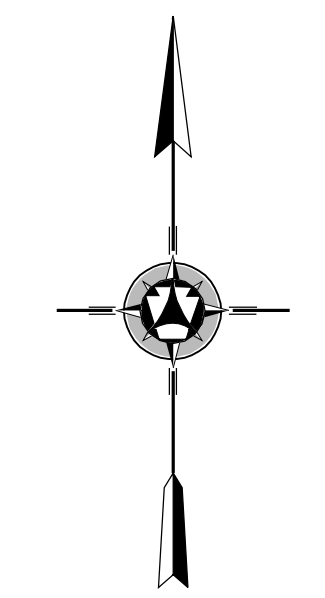
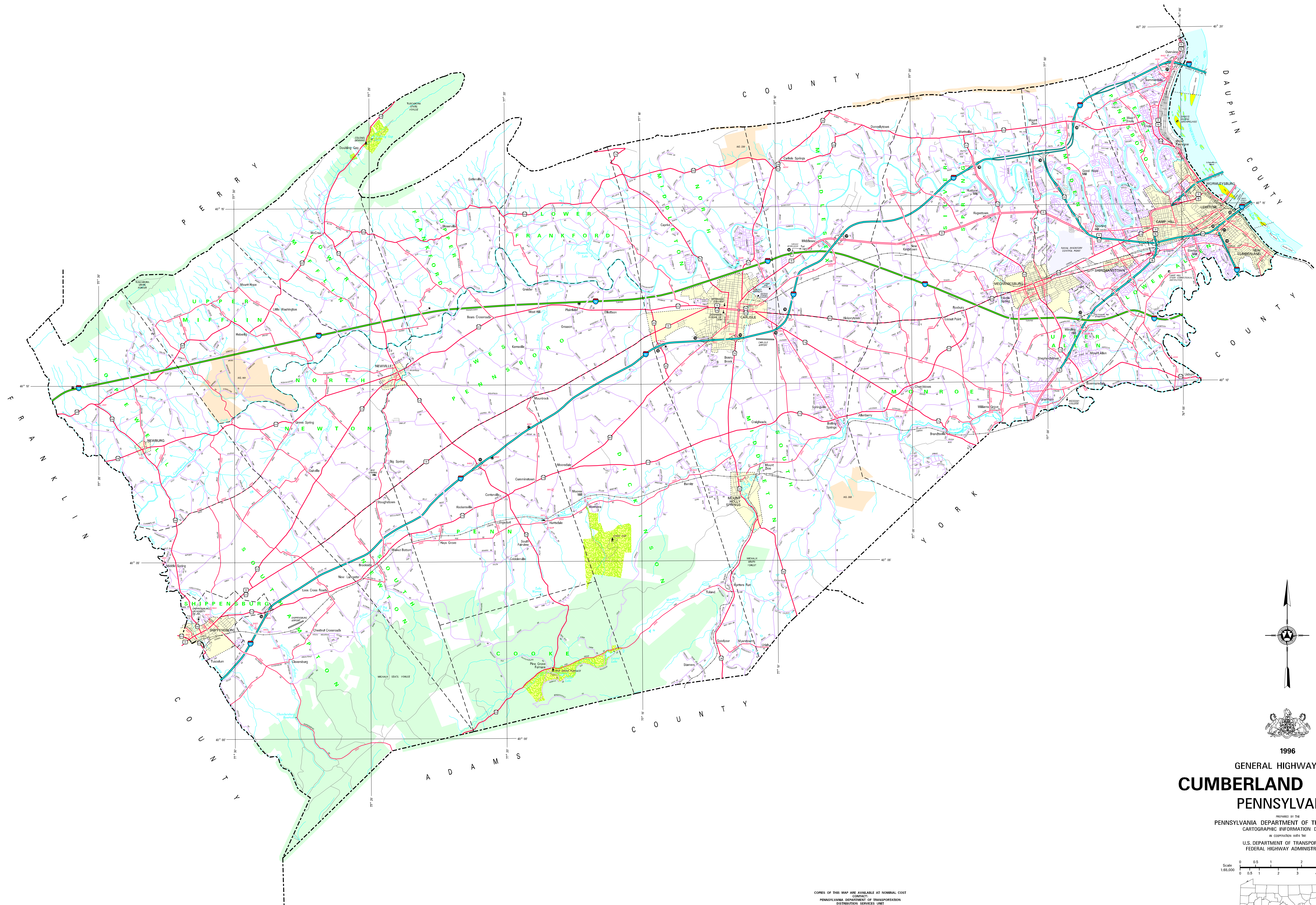
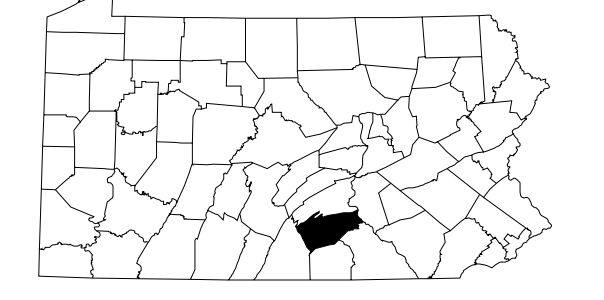
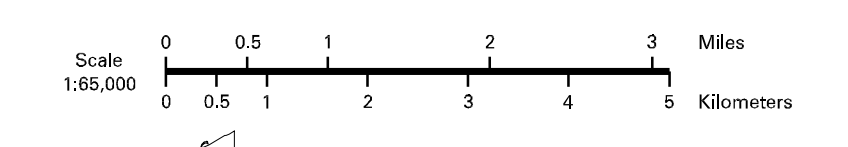


- LEGEND**
- EXPRESSWAY - ACCESS FULLY CONTROLLED
 - MULTI-LANE HIGHWAY
 - TRUNK ROUTE
 - HOV-3 ROUTE
 - STATE MAINTAINED ROAD
 - TOWNSHIP ROAD
 - TOWNSHIP ROAD (PAVED)
 - OTHER ROAD
 - INTERSTATE HIGHWAY NUMBER
 - INTERSTATE TRUNK ROUTE
 - UNPAVED TRUNK ROUTE
 - PSYCHOLOGICAL TRUNK ROUTE
 - RAILROAD IN SERVICE
 - RAILROAD ABANDONED TRUCK RAILROAD
 - STATE LINE
 - COUNTY LINE
 - TOWNSHIP LINE
 - INCORPORATED CITY
 - INCORPORATED BOROUGH
 - STATE CAPITAL
 - COUNTY SEAT
 - OTHER CONSUMER
 - COLLEGE OR UNIVERSITY
 - STATE POLICE FACILITY
 - STATE SQUADRON/STATE POLICE
 - FEDERAL - STATE INSTITUTION
 - FARM OWN FACILITY
 - FOREST OF INTEREST
 - NATURAL AREA
 - REST AREA AND COMFORT FACILITY
 - WILDLIFE CENTER AND COMFORT FACILITY
 - STATE FISH HATCHERY
 - STATE FOREST NATURAL AREA
 - STATE FOREST FISH AREA
 - FEDERAL RESERVATION SITE
 - STATE PARK LAND - HEADQUARTERS
 - STATE AND FEDERAL FOREST LAND
 - STATE AND FEDERAL FOREST LAND
 - FEDERAL PARK (RECREATION) LAND
 - FEDERAL RESERVATION



1996
 GENERAL HIGHWAY MAP
CUMBERLAND COUNTY
 PENNSYLVANIA

ISSUED BY THE
 PENNSYLVANIA DEPARTMENT OF TRANSPORTATION
 CARTOGRAPHIC INFORMATION DIVISION
 IN COOPERATION WITH THE
 U.S. DEPARTMENT OF TRANSPORTATION
 FEDERAL HIGHWAY ADMINISTRATION



COPIES OF THIS MAP ARE AVAILABLE AT NOMINAL COST
 CONTACT:
 PENNSYLVANIA DEPARTMENT OF TRANSPORTATION
 DISTRIBUTION SERVICES UNIT
 P.O. BOX 3028
 HARRISBURG, PENNSYLVANIA 17105
 TELEPHONE: (717) 787-4266

USERS NOTED ERRORS OR OMISSIONS ON THIS MAP
 ARE URGED TO REPORT THEM TO:
 PENNSYLVANIA DEPARTMENT OF TRANSPORTATION
 CARTOGRAPHIC INFORMATION DIVISION
 605 WALNUT STREET - 6TH FLOOR
 HARRISBURG, PENNSYLVANIA 17101-3900

COPYRIGHT - COMMONWEALTH OF PENNSYLVANIA
 DEPARTMENT OF GENERAL SERVICES