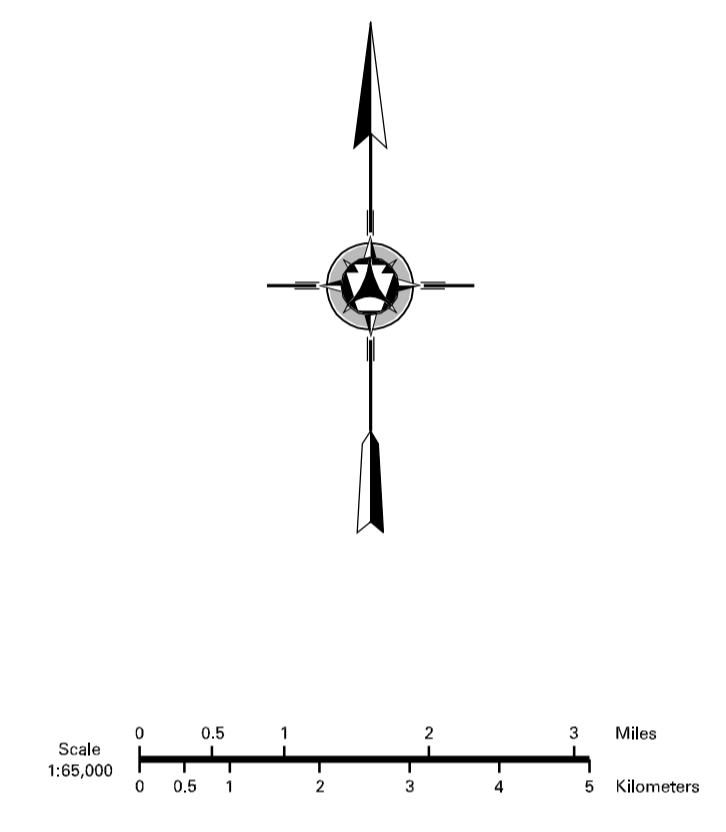
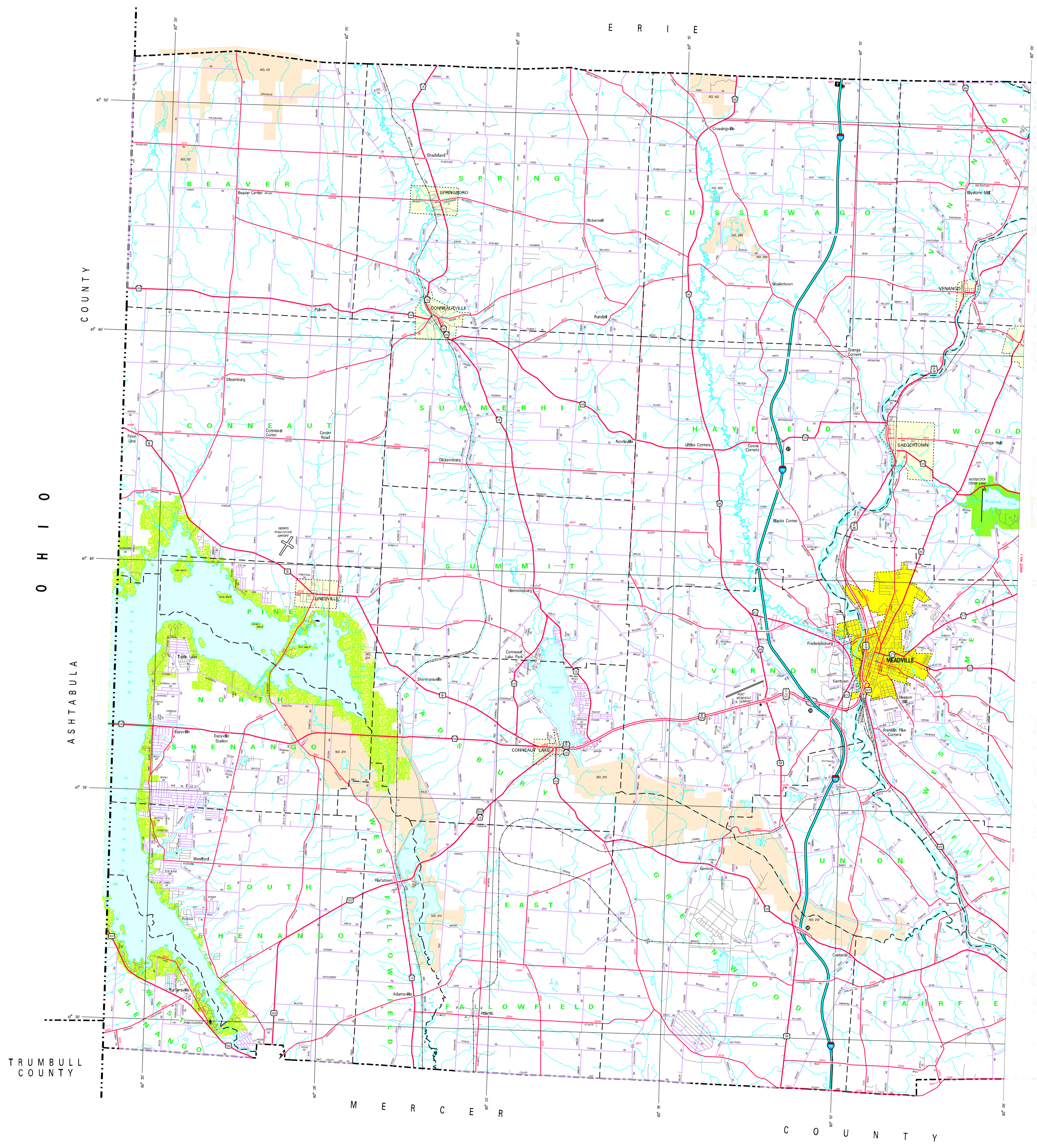


- LEGEND**
- EXPRESSWAY - ACCESS FULLY CONTROLLED
 - MULTI-LANE HIGHWAY
 - TRUNK ROUTE
 - ROADWAY STATE ROAD AND ROUTE
 - STATE MAINTAINED BRIDGE
 - TOWNSHIP ROAD (UNIMPROVED)
 - OTHER ROAD
 - INTERSTATE AIRCRAFT NUMBER
 - LIMITED ACCESS TRUNK ROUTE
 - PROPOSED TRUNK ROUTE
 - RAILROAD - ABANDONED (STRAIGHT REDUCED)
 - STATE LINE
 - COUNTY LINE
 - INCORPORATED CITY
 - INCORPORATED VILLAGE
 - STATE CAPITAL
 - COUNTY SEAT
 - OTHER CONVENTION
 - COLLEGE OR UNIVERSITY
 - STATE ROAD FACILITY
 - STATE HISTORIC SITE
 - FEDERAL JUDICIAL BUILDING
 - FIRE STATION
 - POINT OF INTEREST
 - HORSE RACE TRACK
 - REST AREA
 - REST AREA AND COMFORT FACILITY
 - VISITOR CENTER AND COMFORT FACILITY
 - STATE HISTORIC SITE
 - STATE FOREST NATURAL AREA
 - STATE POWER PLANT AREA
 - FEDERAL RESERVATION
 - STATE PARK LAND (UNDEVELOPED)
 - STATE GAME LAND AND BARRIER
 - STATE AND FEDERAL FOREST LAND
 - FEDERAL PARK RECREATION LAND
 - FEDERAL RESERVATION



SHEET NO. 2
SHEET NO. 2 OF 2
POLYCONIC PROJECTION