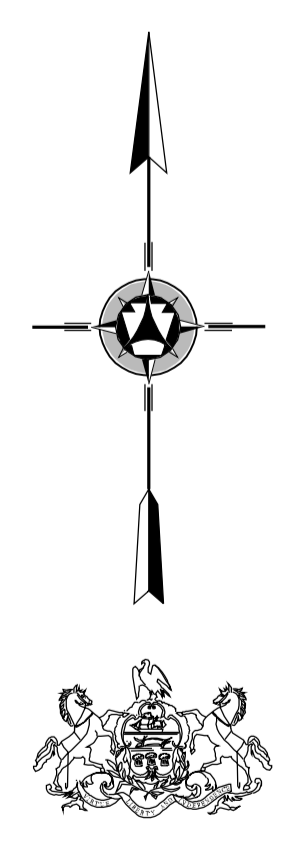
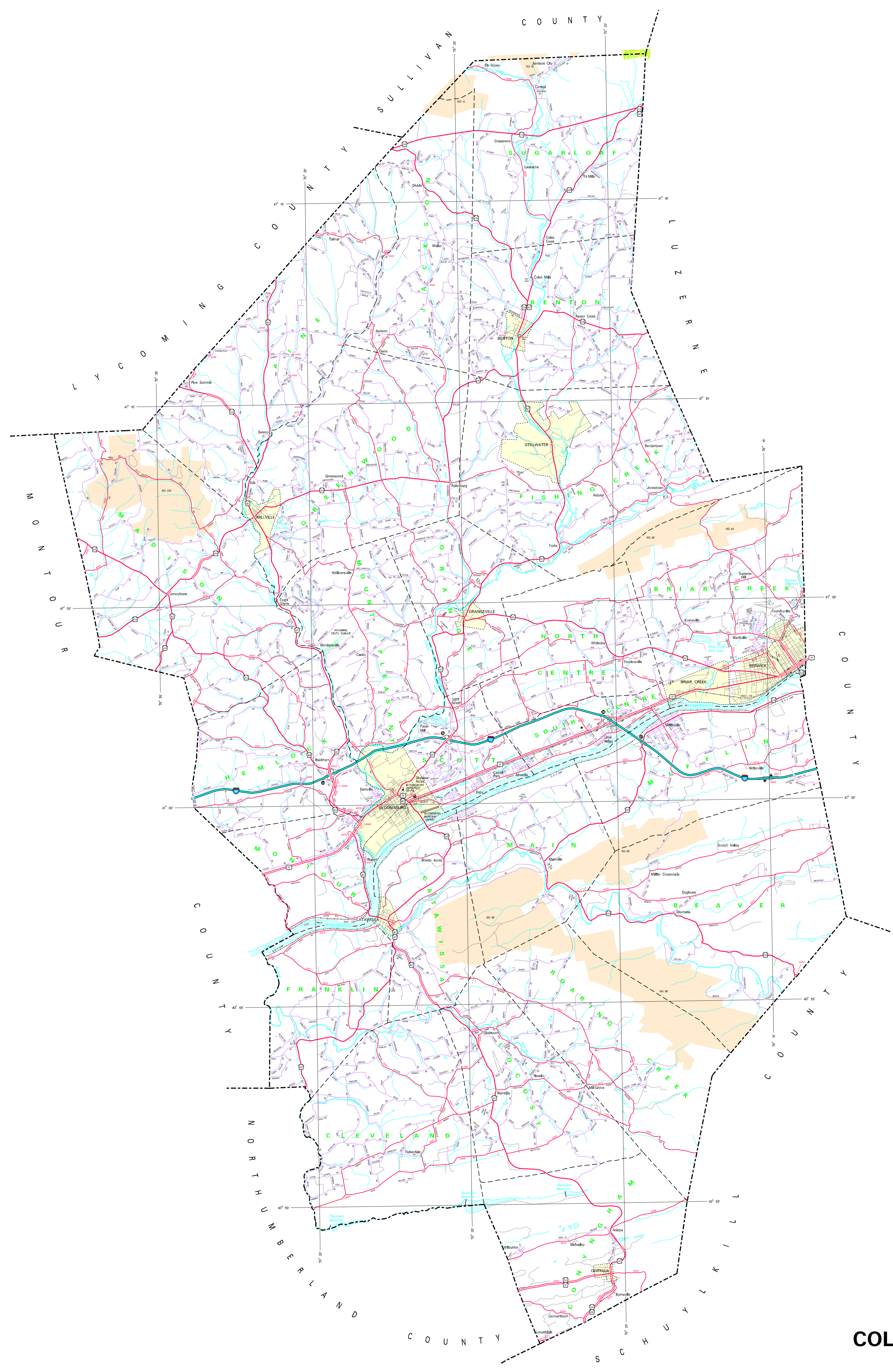
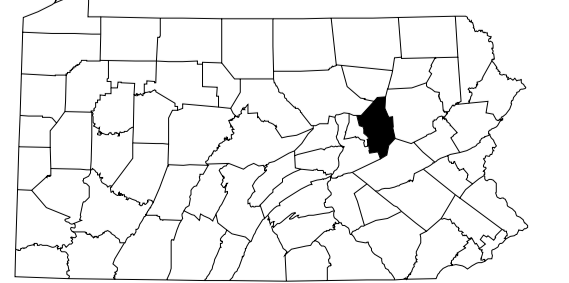
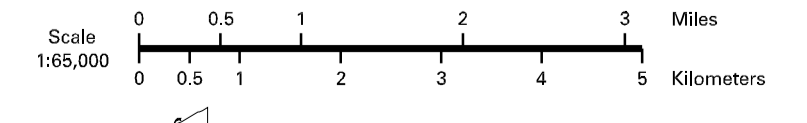


- LEGEND**
- EXPRESSWAY - ACCESS FULLY CONTROLLED
 - MULTILANE HIGHWAY
 - TRUNK ROAD
 - RESURVED STATE ROAD AND CENTER
 - STATE MAINTAINED BRIDGE
 - TOWNSHIP ROAD
 - TOWNSHIP ROAD (UNIMPROVED)
 - OTHER ROAD
 - RESERVED HIGHWAY NUMBER
 - UNDESIGNATED TRAFFIC ROUTE
 - UNITED STATES TRAFFIC ROUTE
 - PENNSYLVANIA TRAFFIC ROUTE
 - MAINTAINED BY SERVICE
 - MAINTAINED (SHOWN) TRACK RETURN
 - STATE LINE
 - COUNTY LINE
 - TOWNSHIP LINE
 - INCORPORATED CITY
 - INCORPORATED BOROUGHS
 - STATE CAPITAL
 - COUNTY SEAT
 - OTHER CONVENIENCE
 - COLLEGE OR UNIVERSITY
 - STATE POLICE FACILITY
 - STATE CORRECTIVE INSTITUTE
 - FEDERAL, STATE, INTERBOROUGH
 - PORT OF FACILITY
 - POINTS OF INTEREST
 - RAILROAD TRACK
 - RAILROAD
 - REST AREA AND COMFORT FACILITY
 - WELCOME CENTER AND COMFORT FACILITY
 - STATE TOUR INFORMATION
 - STATE FOREST NATURAL AREA
 - STATE FOREST RECREATION AREA
 - FEDERAL RECREATION AREA
 - STATE PARK LAND (HEADQUARTERS)
 - STATE GAME LAND AND NUMBER
 - STATE AND FEDERAL FOREST LAND
 - FEDERAL PARK RECREATION LAND
 - FEDERAL RESERVATION



1995
 GENERAL HIGHWAY MAP
COLUMBIA COUNTY
 PENNSYLVANIA

PREPARED BY THE
 PENNSYLVANIA DEPARTMENT OF TRANSPORTATION
 CARTOGRAPHIC INFORMATION DIVISION
 IN COOPERATION WITH THE
 U.S. DEPARTMENT OF TRANSPORTATION
 FEDERAL HIGHWAY ADMINISTRATION



POPULATION OF COUNTY 1990 Census..... 42,242
 AREA OF COUNTY (SQ. MI.)..... 488
 (SQ. KM.)..... 1,263
 POLYCONIC PROJECTION

COPIES OF THIS MAP ARE AVAILABLE AT NOMINAL COST
 CONTACT:
 PENNSYLVANIA DEPARTMENT OF TRANSPORTATION
 DESIGNATION SERVICES UNIT
 HARRISBURG, PENNSYLVANIA 17105
 TELEPHONE: (717) 787-5746

USERS NOTING ERRORS OR OMISSIONS ON THIS MAP
 ARE URGED TO REPORT THEM TO:
 PENNSYLVANIA DEPARTMENT OF TRANSPORTATION
 CARTOGRAPHIC INFORMATION DIVISION
 485 WALNUT STREET - 5TH FLOOR
 HARRISBURG, PENNSYLVANIA 17101-7000

COPYRIGHT - COMMONWEALTH OF PENNSYLVANIA
 DEPARTMENT OF GENERAL SERVICES

Printed on Recycled Paper