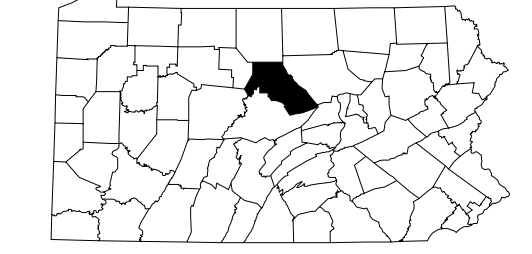
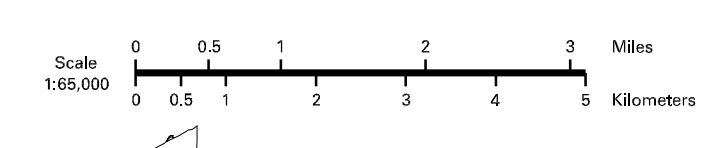




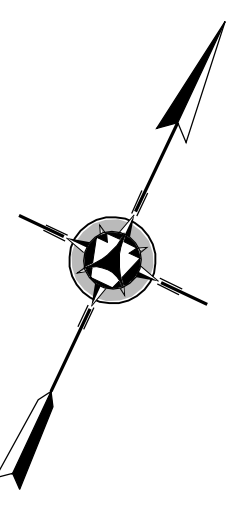
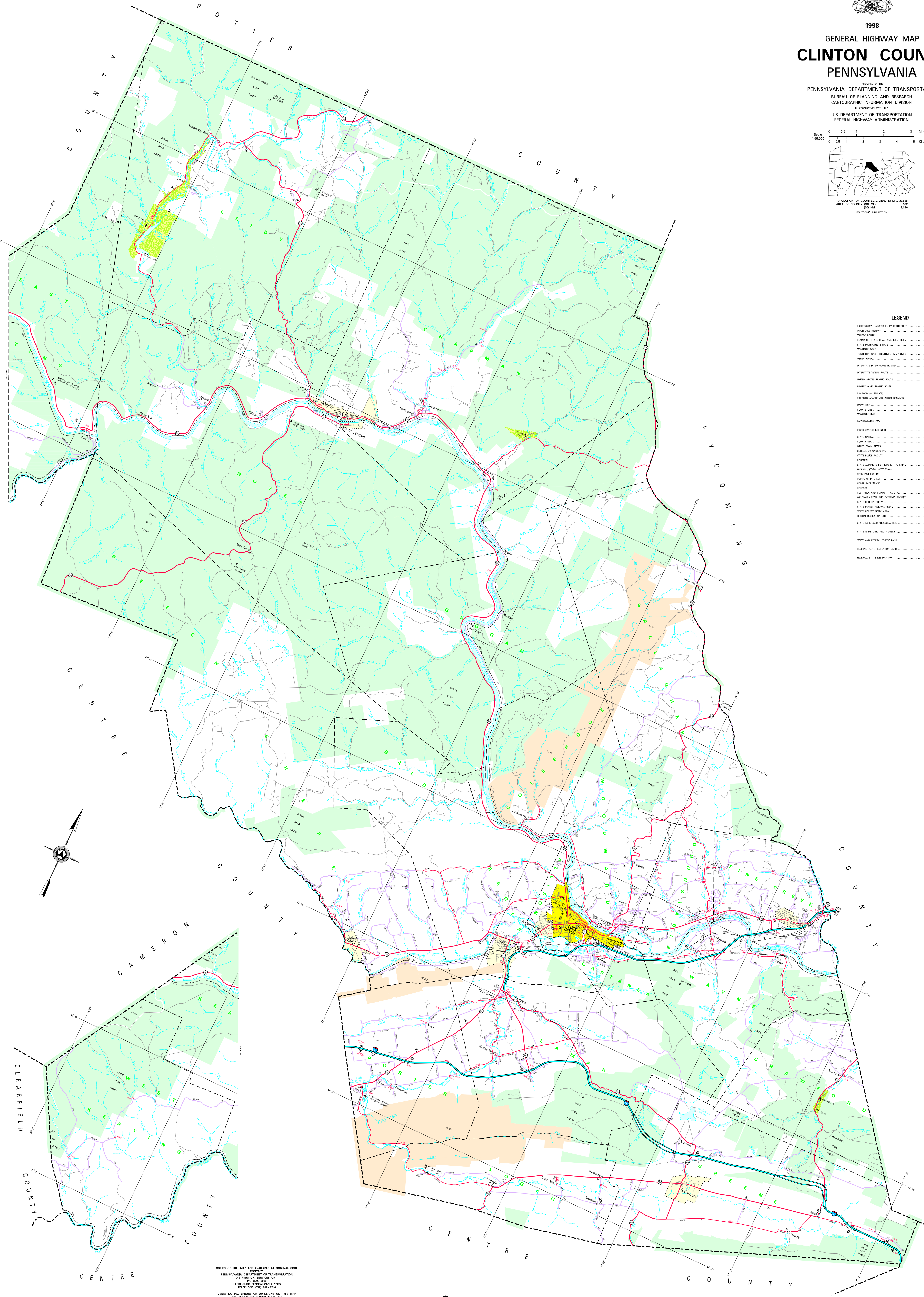
1998

GENERAL HIGHWAY MAP CLINTON COUNTY PENNSYLVANIA

PREPARED BY THE
PENNSYLVANIA DEPARTMENT OF TRANSPORTATION
BUREAU OF PLANNING AND RESEARCH
CARTOGRAPHIC INFORMATION DIVISION
IN COOPERATION WITH THE
U.S. DEPARTMENT OF TRANSPORTATION
FEDERAL HIGHWAY ADMINISTRATION



POPULATION OF COUNTY 1997 EST. 36,885
AREA OF COUNTY (SQ. MI.) 602
(SQ. KM.) 2,336
POLYCONIC PROJECTION



LEGEND

- DEPRESSIVE - ACCESS FULLY CONTROLLED
- MULTILANE HIGHWAY
- TRUCK ROUTE
- HEAVY STATE ROAD AND ROUTE
- STATE MAINTAINED ROAD
- TOWNSHIP ROAD (UNIMPROVED)
- OTHER ROAD
- INDEPENDENT APPROXIMATE NUMBER
- STATE TRUCK ROUTE
- UNCLASSIFIED STATE ROAD
- ROADSIDE SERVICE
- RAILROAD
- RAILROAD ABANDONED TRACKS RETAINED
- STATE LINE
- COUNTY LINE
- TOWNSHIP LINE
- INCORPORATED CITY
- INCORPORATED BOROUGH
- STATE CAPITAL
- COUNTY SEAT
- OTHER COMMUNITY
- COLLEGE OR UNIVERSITY
- STATE POLICE FACILITY
- STATE JAIL
- STATE ADMINISTERED HISTORIC PROPERTY
- FEDERAL JUDGE RESIDENCE
- POST OFFICE FACILITY
- POWERS OF JUDICIAL
- HISTORIC SITE
- HEMPFORD
- REST AREA AND SERVICE FACILITY
- WILSON CENTER AND SERVICE FACILITY
- STATE PARK (STATE)
- STATE FOREST (STATE)
- STATE FOREST (FEDERAL)
- FEDERAL RECREATION SITE
- STATE PARK LAND (HEADQUARTERS)
- STATE GAME LAND AND NUMBER
- STATE AND FEDERAL FOREST LAND
- FEDERAL PARK RECREATION LAND
- FEDERAL STATE RESERVATION

COPIES OF THIS MAP ARE AVAILABLE AT NOMINAL COST
CONTACT:
PENNSYLVANIA DEPARTMENT OF TRANSPORTATION
CARTOGRAPHIC SERVICES UNIT
P.O. BOX 2009
HARRISBURG, PENNSYLVANIA 17105
TELEPHONE: (717) 797-8744
FAX: (717) 797-8744
USERS: AUTHOR, EDITOR, OR USER OF THIS MAP
ARE URGED TO REPORT THEM TO
PENNSYLVANIA DEPARTMENT OF TRANSPORTATION
CARTOGRAPHIC INFORMATION DIVISION
SEE WALNUT STREET - 6th FLOOR
HARRISBURG, PENNSYLVANIA 17101 - 1000

COPYRIGHT - COMMONWEALTH OF PENNSYLVANIA
DEPARTMENT OF GENERAL SERVICES

Printed on Recycled Paper