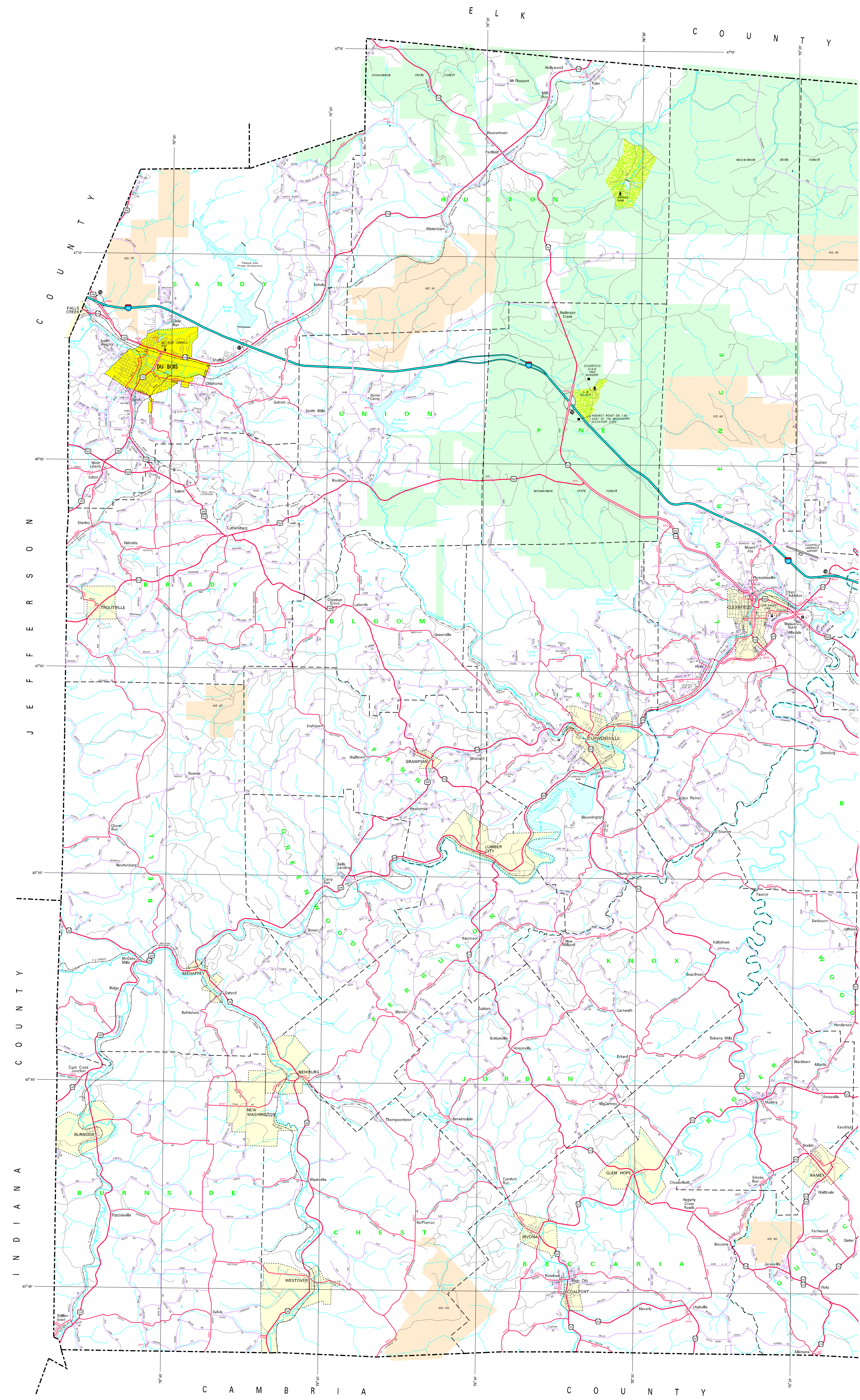


- LEGEND**
- EXPRESSWAY - ACCESS FULLY CONTROLLED
 - MULTILANE HIGHWAY
 - THREE LANE
 - RESURVED STATE ROAD AND CENTERLINE
 - STATE MAINTAINED BRIDGE
 - TOWNSHIP ROAD
 - TOWNSHIP ROAD (UNPAVED/UNIMPROVED)
 - OTHER ROAD
 - RESERVED ADDRESSING NUMBER
 - RESERVED TRUCK ROUTE
 - UNITED STATES TRUCK ROUTE
 - PENNSYLVANIA TRUCK ROUTE
 - RAILROAD IN SERVICE
 - RAILROAD ABANDONED (TRACK REMOVED)
 - STATE LINE
 - COUNTY LINE
 - TOWNSHIP LINE
 - INCORPORATED CITY
 - INCORPORATED BOROUGH
 - STATE CAPITAL
 - COUNTY SEAT
 - OTHER CONCENTRATED
 - COLLEGE OR UNIVERSITY
 - STATE HOUSE PALACE
 - STATE ADMINISTERED WEDDING PROPERTY
 - FEDERAL STATE INSTITUTION
 - PORT OF FACILITY
 - PORT OF INTEREST
 - MOTOR RACE TRACK
 - HOSPITAL
 - REST AREA AND COMFORT FACILITY
 - VALLEYS, SWATHS AND COMFORT FACILITY
 - STATE AIR HIGHWAY
 - STATE SCHOOL NATURAL AREA
 - STATE WILDERNESS AREA
 - FEDERAL RECREATION AREA
 - STATE PARK LAND (HEADQUARTERS)
 - STATE GAME LAND AND RESERVE
 - STATE AND FEDERAL FOREST LAND
 - FEDERAL PARK (RECREATION LAND)
 - FEDERAL RESERVATION



Printed on Recycled Paper



COPYRIGHT - COMMONWEALTH OF PENNSYLVANIA
DEPARTMENT OF GENERAL SERVICES

