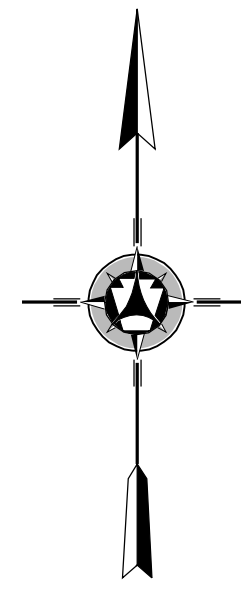
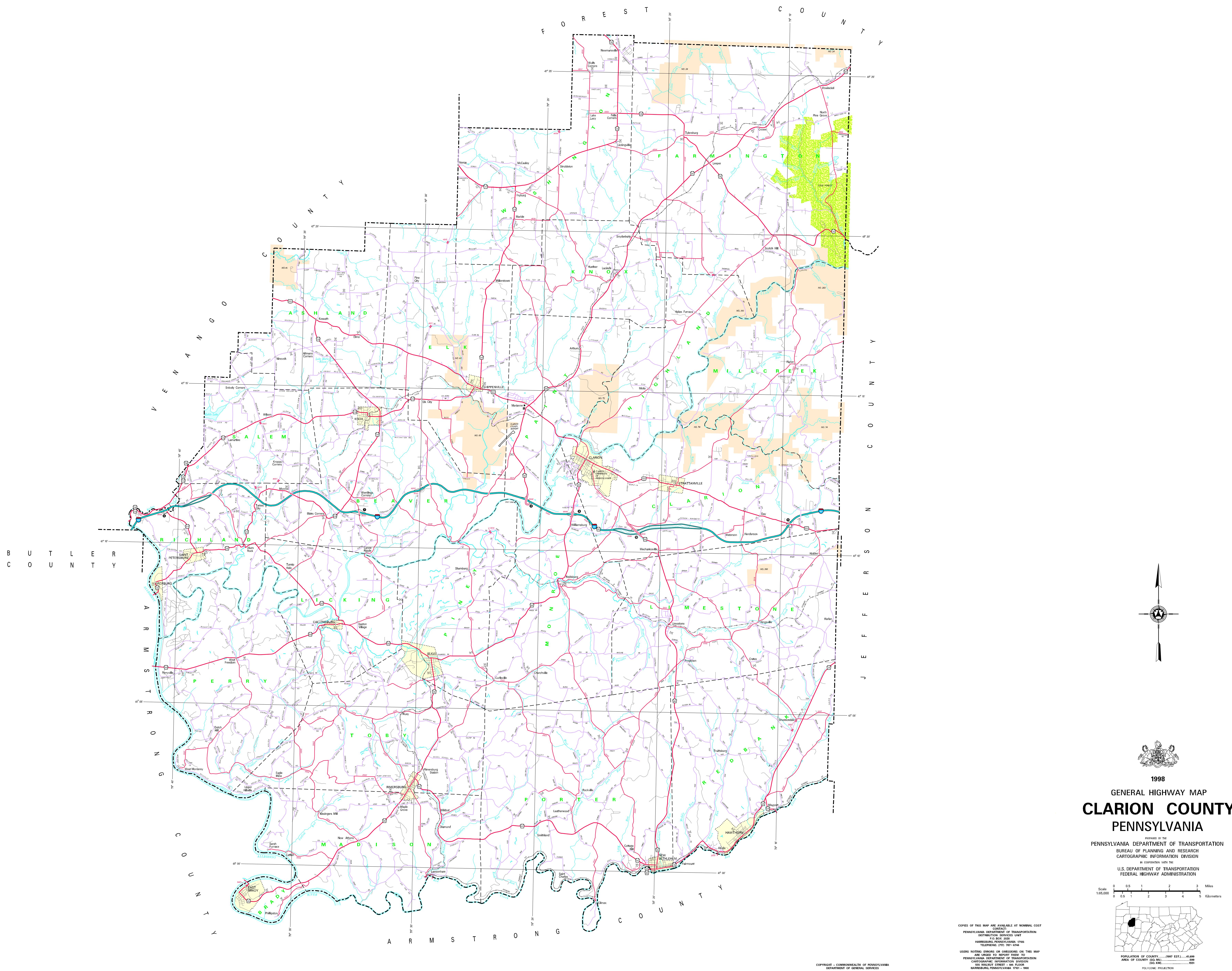
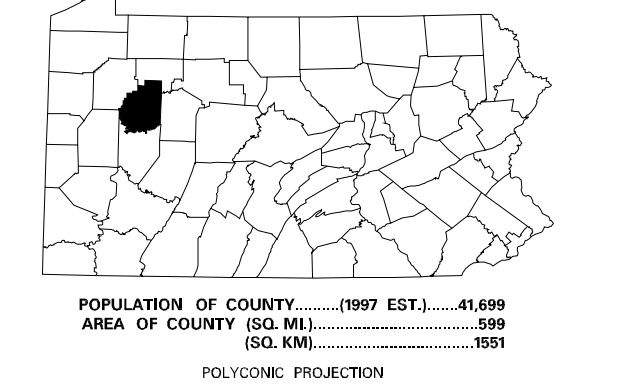
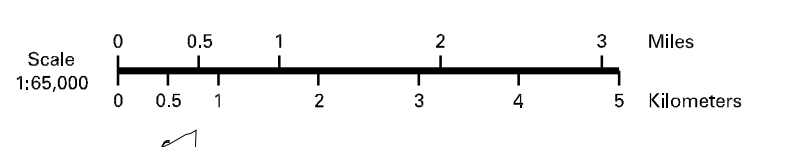


- LEGEND**
- EXPRESSWAY - ACCESS FULLY CONTROLLED
 - MULTILANE HIGHWAY
 - TRUNK ROAD
 - PRIMARY STATE ROAD AND ROUTE
 - STATE MAINTAINED ROAD
 - TOWNSHIP ROAD
 - TOWNSHIP ROAD (UNPAVED)
 - OTHER ROAD
 - PRIVATE WINDING HIGHWAY
 - PRIVATE TRAIL ROUTE
 - UNPAVED TRAIL ROUTE
 - PENNSYLVANIA TRAIL ROUTE
 - RAILROAD IN SERVICE
 - RAILROAD ABANDONED TRACK REMAINS
 - STATE LINE
 - COUNTY LINE
 - TOWNSHIP LINE
 - INCORPORATED CITY
 - INCORPORATED BOROUGH
 - STATE CAPITAL
 - COUNTY SEAT
 - OTHER COMMERCIAL
 - COLLEGE OR UNIVERSITY
 - STATE PRISON FACILITY
 - CAMPUS
 - STATE ADMINISTERED HISTORIC PROPERTY
 - FEDERAL STATE HISTORIC SITE
 - STATE DOT FACILITY
 - PORT OF INTEREST
 - HOME LAKE TRUCK
 - RECREATION
 - REST AREA AND SERVICE FACILITY
 - RECREATION CENTER AND CONCRETE FACILITY
 - STATE FISH HATCHERY
 - STATE FOREST NATURAL AREA
 - STATE FOREST PLANT AREA
 - FEDERAL RECREATION SITE
 - STATE PARK LAND - HEADQUARTERS
 - STATE GAZE LAND AND MARSH
 - STATE AND FEDERAL FOREST LAND
 - FEDERAL PARK / RECREATION LAND
 - FEDERAL RESERVATION



1998
 GENERAL HIGHWAY MAP
CLARION COUNTY
 PENNSYLVANIA

PREPARED BY THE
 PENNSYLVANIA DEPARTMENT OF TRANSPORTATION
 BUREAU OF PLANNING AND RESEARCH
 CARTOGRAPHIC INFORMATION DIVISION
 IN COOPERATION WITH THE
 U.S. DEPARTMENT OF TRANSPORTATION
 FEDERAL HIGHWAY ADMINISTRATION



COPIES OF THIS MAP ARE AVAILABLE AT NOMINAL COST
 CONTACT:
 PENNSYLVANIA DEPARTMENT OF TRANSPORTATION
 DISTRIBUTION SERVICES UNIT
 P.O. BOX 3028
 HARRISBURG, PENNSYLVANIA 17105
 TELEPHONE (717) 797-8746

USPS ROUTE BRANCH OR SUBSECTION ON THIS MAP
 ARE USED TO REPORT THEM TO
 PENNSYLVANIA DEPARTMENT OF TRANSPORTATION
 CARTOGRAPHIC INFORMATION DIVISION
 325 WALNUT STREET - 8TH FLOOR
 HARRISBURG, PENNSYLVANIA 17101 - 3000