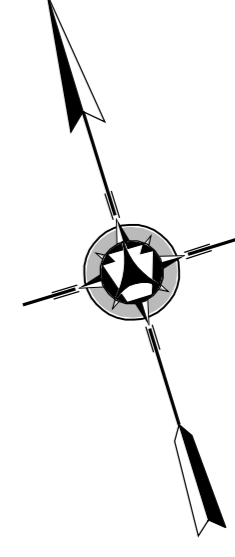
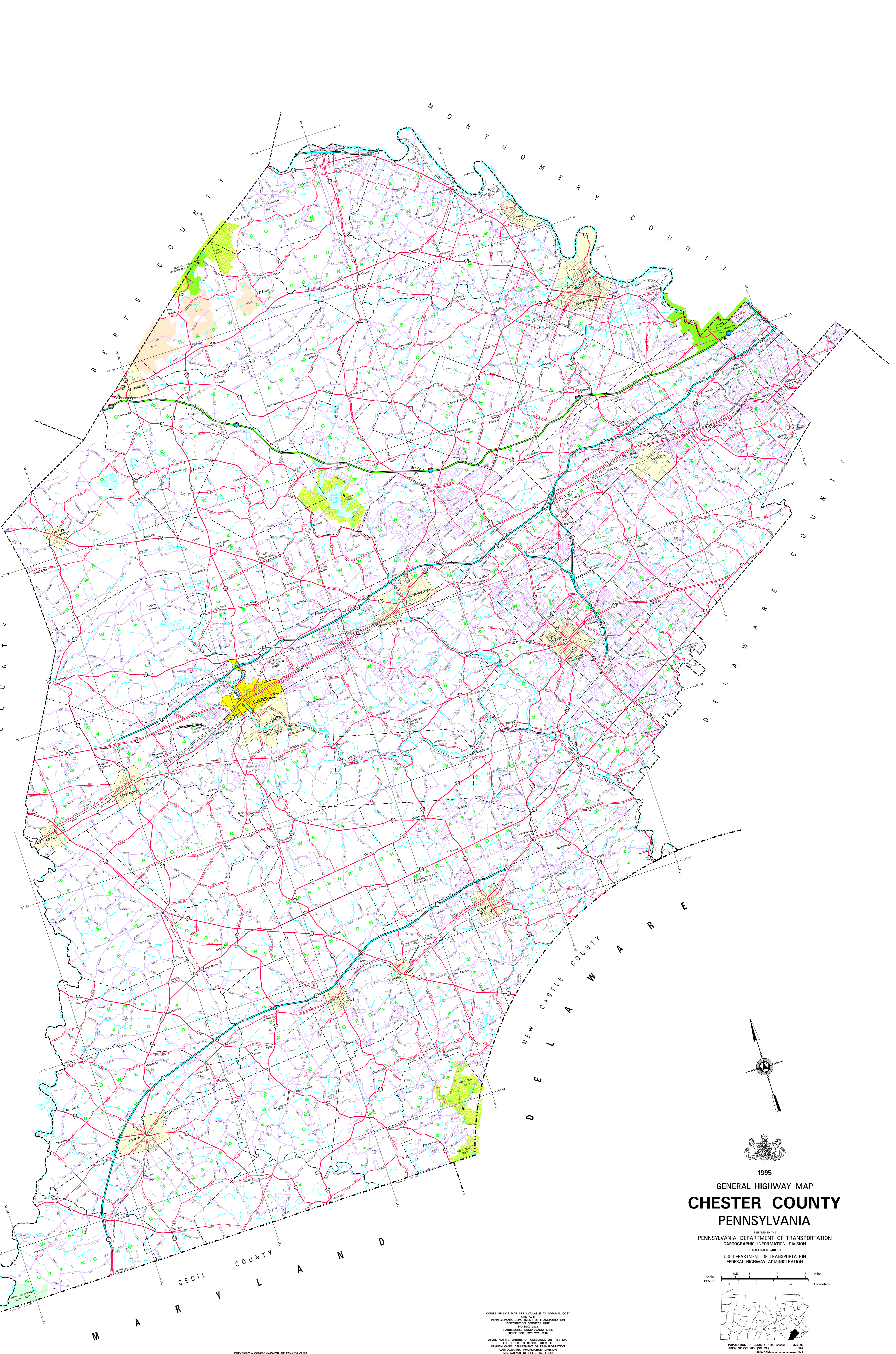
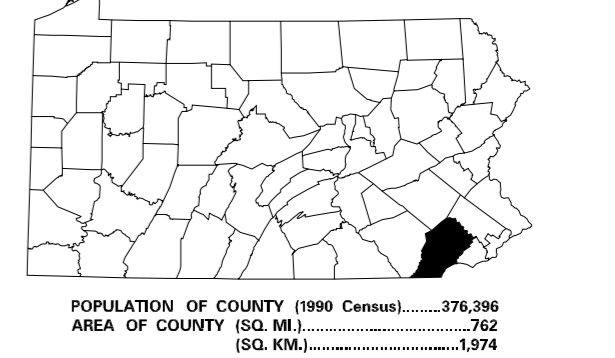
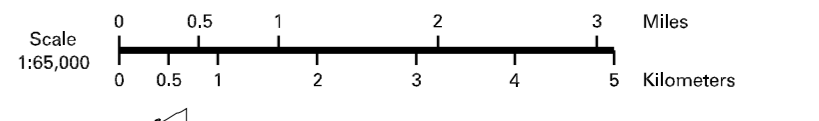


- LEGEND**
- EXPRESSWAY - ACCESS FULLY CONTROLLED
 - MULTILANE HIGHWAY
 - TRUNK ROUTE
 - RESERVED STATE ROAD AND NUMBER
 - STATE NUMBERED STREET
 - TOWNSHIP ROAD
 - TOWNSHIP ROAD (PARTIALLY UNIMPROVED)
 - OTHER ROAD
 - INTERSTATE INTERCHANGE NUMBER
 - INTERSTATE TRUNK ROUTE
 - UNIMPROVED TRUNK ROUTE
 - PERMISSIBLE TRUNK ROUTE
 - RAILROAD IN SERVICE
 - RAILROAD ABANDONED TRACK RETAINED
 - STATE LINE
 - COUNTY LINE
 - TOWNSHIP LINE
 - INCORPORATED CITY
 - RECORDED SUBDIVISION
 - CITY CENTER
 - COUNTY SEAT
 - OTHER COMMUNITIES
 - SCHOOL OR UNIVERSITY
 - STATE POLICE FACILITY
 - STATE CORRECTIONAL INSTITUTION
 - FEDERAL STATE BUILDING
 - FEDERAL POST OFFICE
 - POWER OF BENEFIT
 - HIGHWAY TRUCK
 - REST AREA AND COMFORT FACILITY
 - WELCOME CENTER AND COMFORT FACILITY
 - STATE FISH HATCHERY
 - STATE FOREST NATURAL AREA
 - FEDERAL RECREATION SITE
 - STATE PARK LAND - HEADQUARTERS
 - STATE PARK LAND AND MANOR
 - STATE AND FEDERAL FOREST LAND
 - FEDERAL PARK RECREATION LAND
 - FEDERAL RECREATION LAND



1995
GENERAL HIGHWAY MAP
CHESTER COUNTY
PENNSYLVANIA

PREPARED BY THE
PENNSYLVANIA DEPARTMENT OF TRANSPORTATION
CARTOGRAPHIC INFORMATION DIVISION
IN COOPERATION WITH THE
U.S. DEPARTMENT OF TRANSPORTATION
FEDERAL HIGHWAY ADMINISTRATION



COPIES OF THIS MAP ARE AVAILABLE AT NOMINAL COST
CONTACT
PENNSYLVANIA DEPARTMENT OF TRANSPORTATION
DISTRIBUTION SERVICES UNIT
P.O. BOX 4556
HARRISBURG, PENNSYLVANIA 17105
TELEPHONE: (717) 787-5746
USERS NOTING ERRORS OR OMISSIONS ON THIS MAP
ARE URGED TO REPORT THEM TO
PENNSYLVANIA DEPARTMENT OF TRANSPORTATION
CARTOGRAPHIC INFORMATION DIVISION
500 MARKET STREET - 6TH FLOOR
HARRISBURG, PENNSYLVANIA 17101-3800