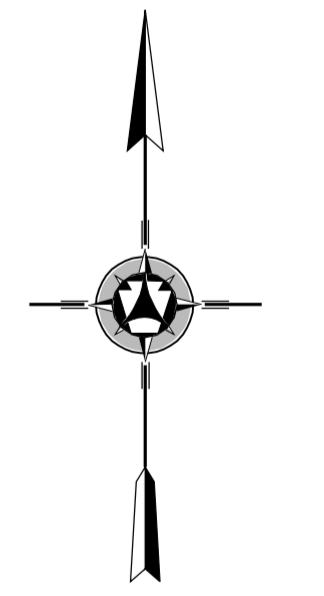
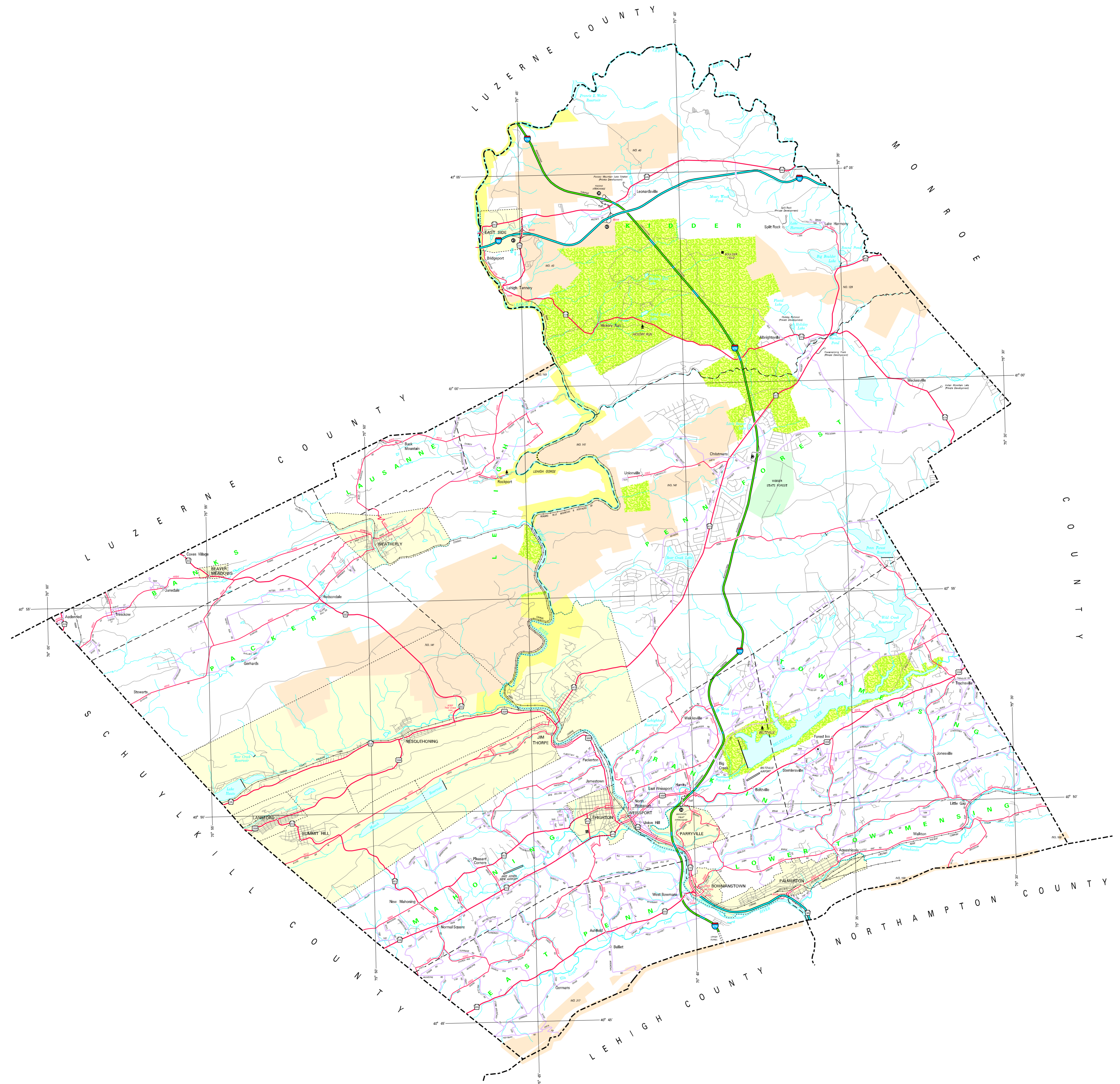
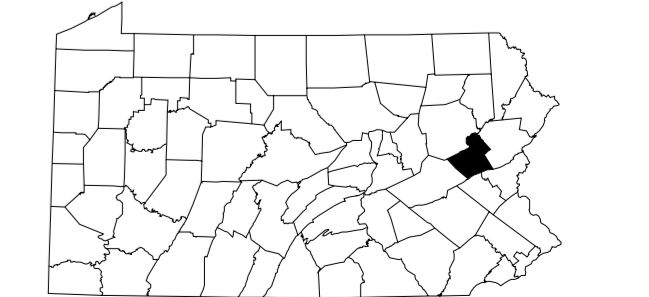
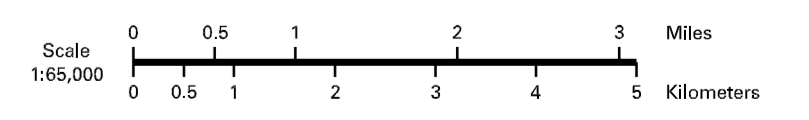


- LEGEND**
- EXPRESSWAY - ACCESS FULLY CONTROLLED
 - MULTILANE HIGHWAY
 - TRUNK ROUTE
 - REMAINING STATE ROAD AND EXISTENCE
 - STATE MAINTAINED BRIDGE
 - TOWNSHIP ROAD (Paved/Unpaved)
 - OTHER ROAD
 - RESIDENTIAL TRAFFIC NUMBER
 - INDUSTRIAL TRAFFIC ROUTE
 - UNIFIED STATE TRAFFIC ROUTE
 - PENNSYLVANIA TRAFFIC ROUTE
 - RAILROAD BY SERVICE
 - RAILROAD (ABANDONED TRAIL RETAINED)
 - STATE LINE
 - COUNTY LINE
 - TOWNSHIP LINE
 - INCORPORATED CITY
 - INCORPORATED BOROUGH
 - STATE CAPITAL
 - COUNTY SEAT
 - OTHER COMMUNITIES
 - COLLEGE OF UNIVERSITY
 - STATE HOUSE FACILITY
 - CENOTAPH
 - STATE COMMERCE HISTORIC PROPERTY
 - FEDERAL GOVERNMENT BUILDING
 - FARM OIL FACILITY
 - PAVING OF IMPROVED
 - HOME AND TRUCK
 - REPAIR
 - POST OFFICE AND CONVOY FACILITY
 - WELCOME CENTER AND CONVOY FACILITY
 - STATE FISH HATCHERY
 - STATE FOREST NATURAL AREA
 - STATE FOREST PLANT AREA
 - FEDERAL RECREATION SET
 - STATE PARK LAND (ACQUISITION)
 - STATE AND FEDERAL FOREST LAND
 - FEDERAL PARK RECREATION LAND
 - FEDERAL RECREATION



1998
GENERAL HIGHWAY MAP
CARBON COUNTY
PENNSYLVANIA

PREPARED BY THE
 PENNSYLVANIA DEPARTMENT OF TRANSPORTATION
 BUREAU OF PLANNING AND RESEARCH
 CARTOGRAPHIC INFORMATION DIVISION
 IN COOPERATION WITH THE
 U.S. DEPARTMENT OF TRANSPORTATION
 FEDERAL HIGHWAY ADMINISTRATION



POPULATION OF COUNTY 1998 Census 16,846
 AREA OF COUNTY 1990 346
 150 KM 1,052
 POLYCONIC PROJECTION

COPIES OF THIS MAP ARE AVAILABLE AT NOMINAL COST
 CONTACT
 PENNSYLVANIA DEPARTMENT OF TRANSPORTATION
 DISTRIBUTION SERVICES UNIT
 800 WALNUT STREET - 8TH FLOOR
 HARRISBURG, PENNSYLVANIA 17103-1000
 USERS NOTING ERRORS OR OMISSIONS ON THIS MAP
 ARE REQUESTED TO NOTIFY BUREAU OF
 PENNSYLVANIA DEPARTMENT OF TRANSPORTATION
 CARTOGRAPHIC INFORMATION DIVISION
 800 WALNUT STREET - 8TH FLOOR
 HARRISBURG, PENNSYLVANIA 17103-1000
 COPYRIGHT - COMMONWEALTH OF PENNSYLVANIA
 DEPARTMENT OF GENERAL SERVICES