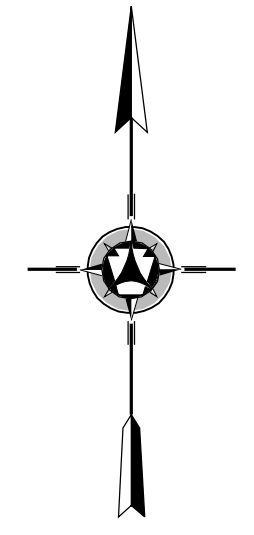
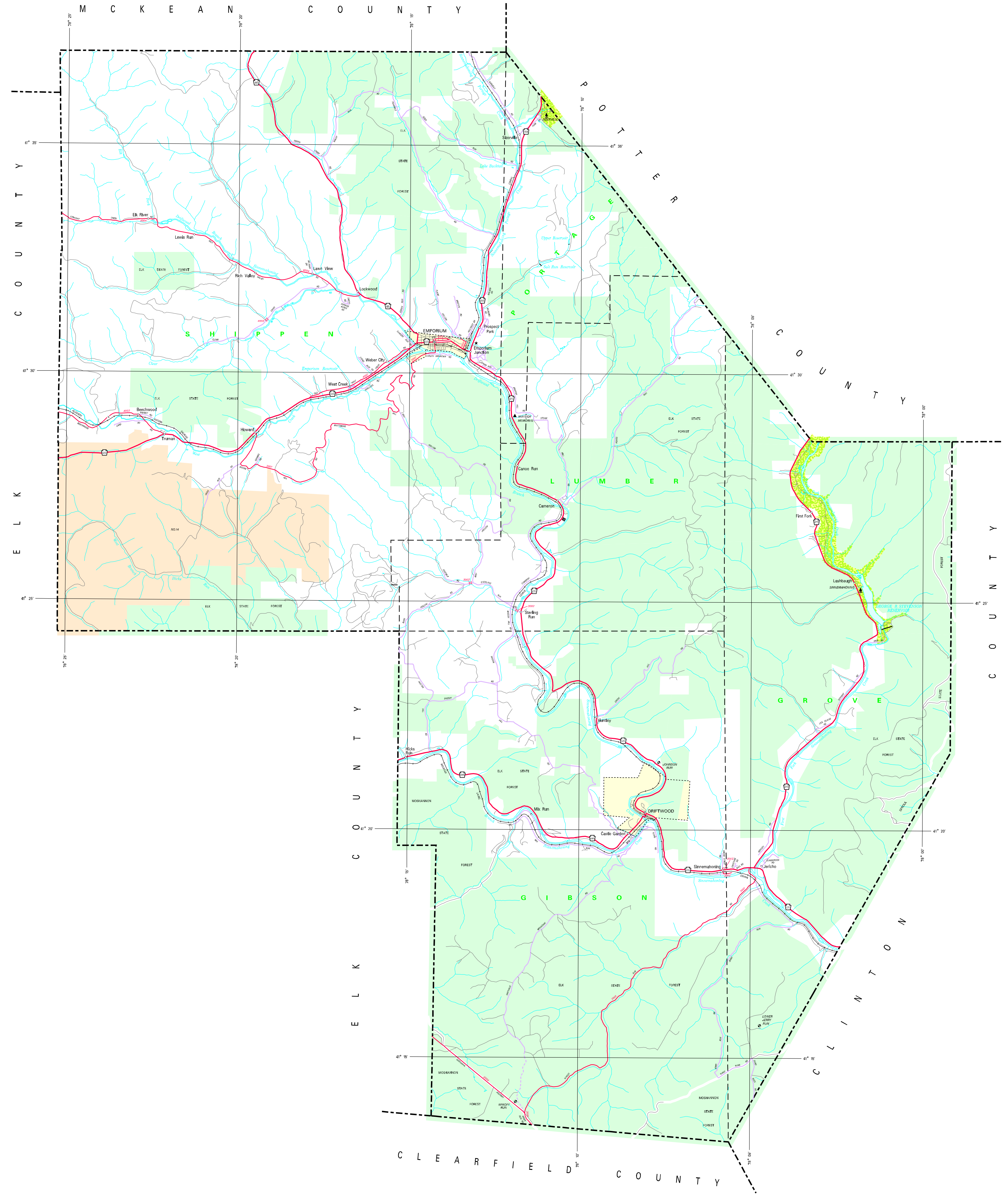
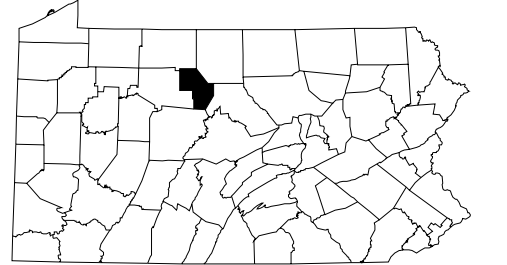
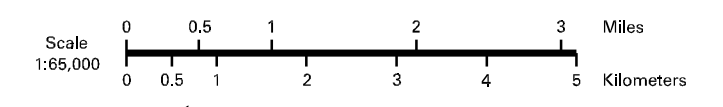


- LEGEND**
- EXPRESSWAY - ACCESS FULLY CONTROLLED
 - MULTI-LANE HIGHWAY
 - THREE LANE HIGHWAY
 - REMAINING STATE ROAD AND ROUTE
 - STATE MAINTAINED ROAD
 - TOWNSHIP ROAD
 - TOWNSHIP ROAD (PAVED UNPAVED)
 - OTHER ROAD
 - INTERSTATE INTERCHANGE NUMBER
 - INTERSTATE TRAFFIC ROUTE
 - UNITED STATES TRAFFIC ROUTE
 - PENNSYLVANIA TRAFFIC ROUTE
 - HAZARD BY SERVICE
 - PAVED UNPAVED (PAVED REMAINS)
 - STATE LINE
 - COUNTY LINE
 - TOWNSHIP LINE
 - INCORPORATED CITY
 - INCORPORATED BOROUGH
 - STATE CENTER
 - COUNTY SEAT
 - OTHER COMMUNITIES
 - COLOR OF LANDSHIPT
 - STATE POLICE FACILITY
 - STATE ADMINISTERED HISTORIC PROPERTY
 - FEDERAL STATE HISTORIC
 - FEIN DOT FACILITY
 - POINTS OF INTEREST
 - HORSE RACE TRACK
 - REEF AREA AND CONCRETE FACILITY
 - RECREATION CENTER AND CONCRETE FACILITY
 - STATE FISH HATCHERY
 - STATE FOREST NURSERY AREA
 - STATE FOREST HOME AREA
 - FEDERAL RECREATION SITE
 - STATE PARK LAND (HEADQUARTERS)
 - STATE GAZED LAND AND NUMBER
 - STATE AND FEDERAL FOREST LAND
 - FEDERAL PARK - RECREATION LAND
 - FEDERAL RESERVATION



1995
GENERAL HIGHWAY MAP
CAMERON COUNTY
PENNSYLVANIA

PREPARED BY THE
 PENNSYLVANIA DEPARTMENT OF TRANSPORTATION
 CARTOGRAPHIC INFORMATION DIVISION
 U.S. DEPARTMENT OF TRANSPORTATION
 FEDERAL HIGHWAY ADMINISTRATION



POPULATION OF COUNTY 1990 Census.....4,813
 AREA OF COUNTY (SQ. MI.).....401
 (SQ. KM.).....1,039
 POLYCONIC PROJECTION

COPIES OF THIS MAP ARE AVAILABLE AT NOMINAL COST
 CONTACT
 PENNSYLVANIA DEPARTMENT OF TRANSPORTATION
 DISTRIBUTION SERVICES UNIT
 P.O. BOX 2026
 HARRISBURG, PENNSYLVANIA 17105
 TELEPHONE: (717) 787-6346
 USERS NOTING ERRORS OR OMISSIONS ON THIS MAP
 ARE URGED TO REPORT THEM TO
 PENNSYLVANIA DEPARTMENT OF TRANSPORTATION
 CARTOGRAPHIC INFORMATION DIVISION
 300 MARKET STREET - 8th FLOOR
 HARRISBURG, PENNSYLVANIA 17101-1000
 COPYRIGHT - COMMONWEALTH OF PENNSYLVANIA
 DEPARTMENT OF GENERAL SERVICES

Printed on Recycled Paper