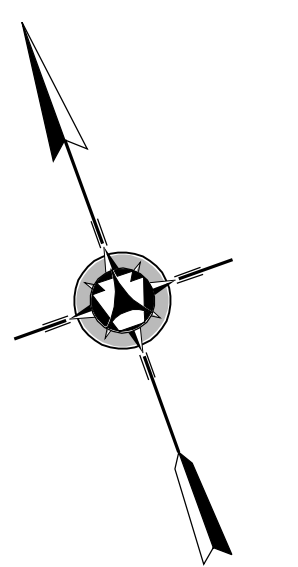
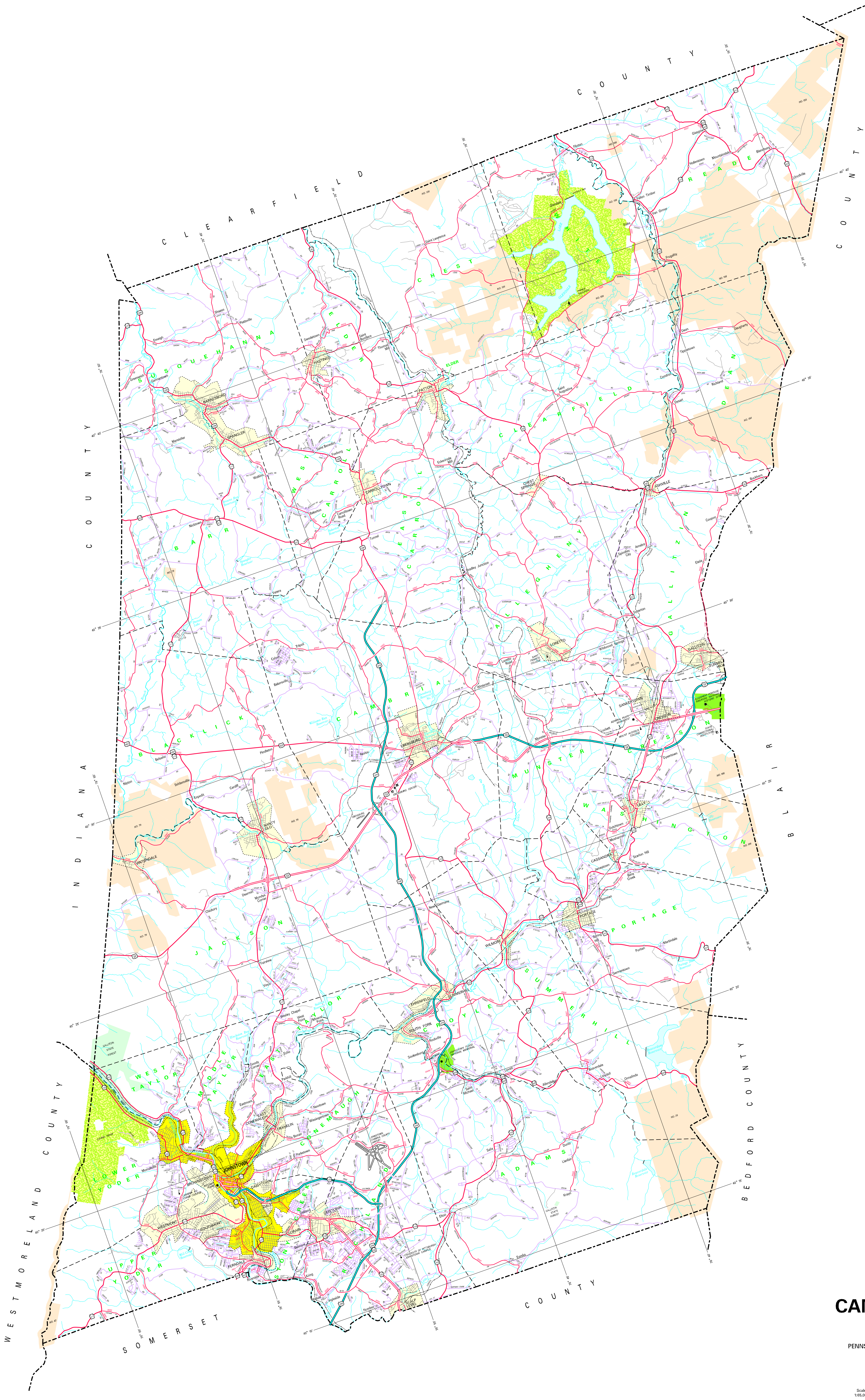


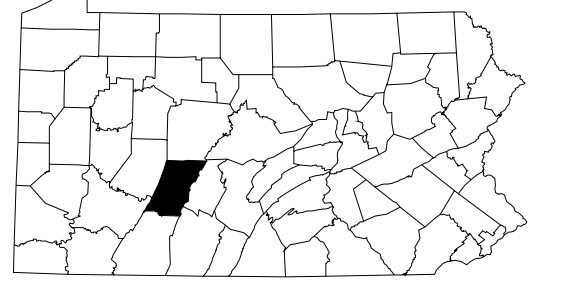
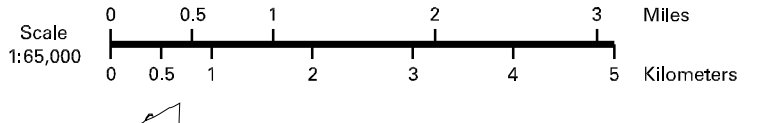
**LEGEND**

FORESTRY - ACCESS FULLY CONTROLLED	.....
MULTI-LANE HIGHWAY	.....
TRAFFIC ROUTE	.....
IMPROVED STATE ROAD AND EXPRESS	.....
STATE MAINTAINED BRIDGE	.....
TOWNSHIP ROAD	.....
TOWNSHIP ROAD (UNPAVED / IMPROVED)	.....
OTHER ROAD	.....
INTERNATIONAL INTERCHANGE NUMBER	.....
UNITED STATES TRAFFIC ROUTE	.....
PENNSYLVANIA TRAFFIC ROUTE	.....
RAILROAD IN SERVICE	.....
RAILROAD ABANDONED (TRACK REMOVED)	.....
STATE LINE	.....
COUNTY LINE	.....
TOWNSHIP LINE	.....
INCORPORATED CITY	.....
INCORPORATED BOROUGH	.....
CITY SEAT	.....
COUNTY SEAT	.....
OTHER COMMUNITIES	.....
COLLEGE OR UNIVERSITY	.....
STATE POLICE FACILITY	.....
STATE GOVERNMENT BUILDING PROPERTY	.....
HIGHWAY (STATE) INTERCHANGES	.....
PORT OF WAREHOUSE	.....
HORSE RACE TRACK	.....
AIRPORT	.....
REST AREA AND COMFORT FACILITY	.....
WELCOME CENTER AND COMFORT FACILITY	.....
STATE BOAT YARD	.....
STATE FOREST HEADQUARTERS	.....
STATE PARK LAND HEADQUARTERS	.....
STATE GAME LAND AND NUMBER	.....
STATE AND FEDERAL FOREST LAND	.....
FEDERAL PARK / RECREATION LAND	.....
FEDERAL RESERVATION	.....



1996  
**GENERAL HIGHWAY MAP**  
**CAMBRIA COUNTY**  
**PENNSYLVANIA**

PREPARED BY THE  
 PENNSYLVANIA DEPARTMENT OF TRANSPORTATION  
 CARTOGRAPHIC INFORMATION DIVISION  
 IN COOPERATION WITH THE  
 U.S. DEPARTMENT OF TRANSPORTATION  
 FEDERAL HIGHWAY ADMINISTRATION



POPULATION OF COUNTY 1990 CENSUS ..... 48,229  
 AREA OF COUNTY (SQ. MI.) ..... 486  
 (SQ. KM.) ..... 1260  
 POLYCONIC PROJECTION

COPIES OF THIS MAP ARE AVAILABLE AT NOMINAL COST  
 CONTACT:  
 PENNSYLVANIA DEPARTMENT OF TRANSPORTATION  
 DISTRIBUTION SERVICES UNIT  
 P.O. BOX 2028  
 HARRISBURG, PENNSYLVANIA 17105  
 TELEPHONE: (717) 767-8744  
 USERS NOTING ERRORS OR OMISSIONS ON THIS MAP  
 ARE URGED TO REPORT THEM TO  
 PENNSYLVANIA DEPARTMENT OF TRANSPORTATION  
 CARTOGRAPHIC INFORMATION DIVISION  
 655 WALNUT STREET - 9TH FLOOR  
 HARRISBURG, PENNSYLVANIA 17105-1840  
 COPYRIGHT - COMMONWEALTH OF PENNSYLVANIA  
 DEPARTMENT OF GENERAL SERVICES