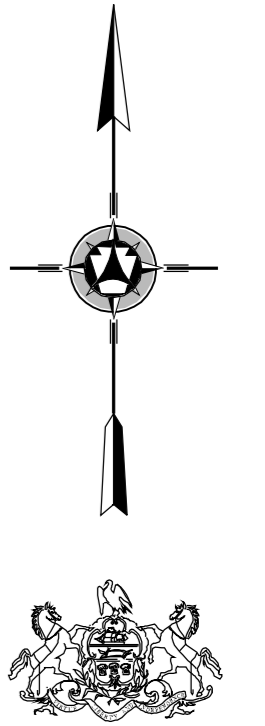
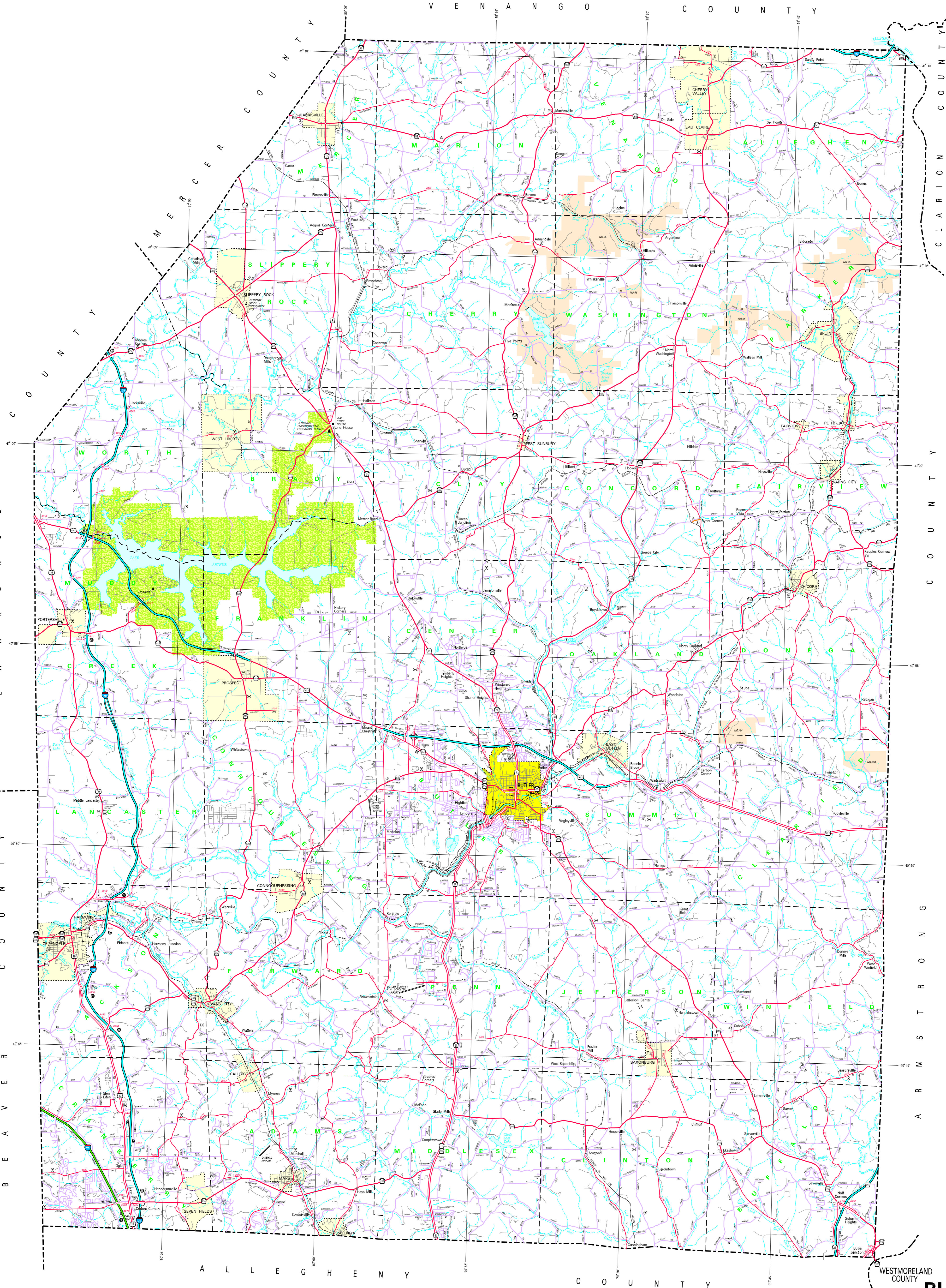
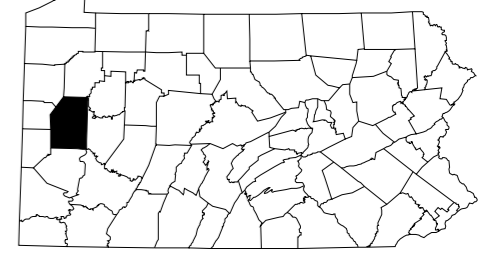
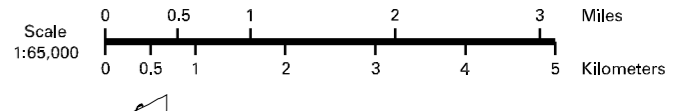


- LEGEND**
- EXPREWAY - ACCESS RAMP CONTROLLED
 - MULTILANE HIGHWAY
 - TRUCK ROUTE
 - RESURVED STATE ROAD AND EXPRESSWAY
 - STATE MAINTAINED BRIDGE
 - TRAVELER ROAD
 - TRAVELER ROAD (PARKWAY/UNIMPAVED)
 - OTHER ROAD
 - INTERSTATE ROUTING NUMBER
 - INTERSTATE TRAFFIC ROUTE
 - UNPAVED STATE TRAFFIC ROUTE
 - PERMANENT TRAFFIC ROUTE
 - PUBLIC HIGHWAY SERVICE
 - PAVING IMPROVED TRUCK ROUTES
 - STATE AVE
 - COUNTY LINE
 - TOWNSHIP LINE
 - INCORPORATED CITY
 - INCORPORATED BOROUGH
 - STATE CAPITAL
 - COUNTY SEAT
 - OTHER COMMUNITY
 - COLLEGE OF UNIVERSITY
 - STATE POLICE HEADQUARTERS
 - STATE LAW ENFORCEMENT PROPERTY
 - FEDERAL STATE HEADQUARTERS
 - FEDERAL DOT FACILITY
 - PLANS OF IMPROVEMENT
 - WATER WIDE BRIDGE
 - REST AREA AND SERVICE FACILITY
 - WILSON CENTER AND CONVENT HOUSE
 - STATE FISH WATERS
 - STATE FOREST FENCING AREA
 - FEDERAL RECREATION AREA
 - STATE PARK LAND (HEADQUARTERS)
 - STATE GAME LAND AND NUMBER
 - STATE AND FEDERAL FOREST LAND
 - FEDERAL PARK RECREATION LAND
 - FEDERAL STATE RESERVATION



1999
GENERAL HIGHWAY MAP
BUTLER COUNTY
PENNSYLVANIA

PREPARED BY THE
 PENNSYLVANIA DEPARTMENT OF TRANSPORTATION
 BUREAU OF PLANNING AND RESEARCH
 CARTOGRAPHIC INFORMATION DIVISION
 IN COOPERATION WITH THE
 U.S. DEPARTMENT OF TRANSPORTATION
 FEDERAL HIGHWAY ADMINISTRATION



POPULATION OF COUNTY 1990 Census - 168,917
 AREA OF COUNTY (SQ. MI.) - 794
 (SQ. KM.) - 2,064
 POLYCONIC PROJECTION

COPIES OF THIS MAP ARE AVAILABLE AT NOMINAL COST
 CONTACT:
 PENNSYLVANIA DEPARTMENT OF TRANSPORTATION
 DISTRIBUTION SERVICES UNIT
 HARRISBURG, PENNSYLVANIA 17105
 TELEPHONE: (717) 787-6246

USERS NOTING ERRORS OR OMISSIONS ON THIS MAP
 ARE URGED TO REPORT THEM TO:
 PENNSYLVANIA DEPARTMENT OF TRANSPORTATION
 CARTOGRAPHIC INFORMATION DIVISION
 605 MARKET STREET - 4TH FLOOR
 HARRISBURG, PENNSYLVANIA 17101 - 1900

COPYRIGHT - COMMONWEALTH OF PENNSYLVANIA
 DEPARTMENT OF GENERAL SERVICES