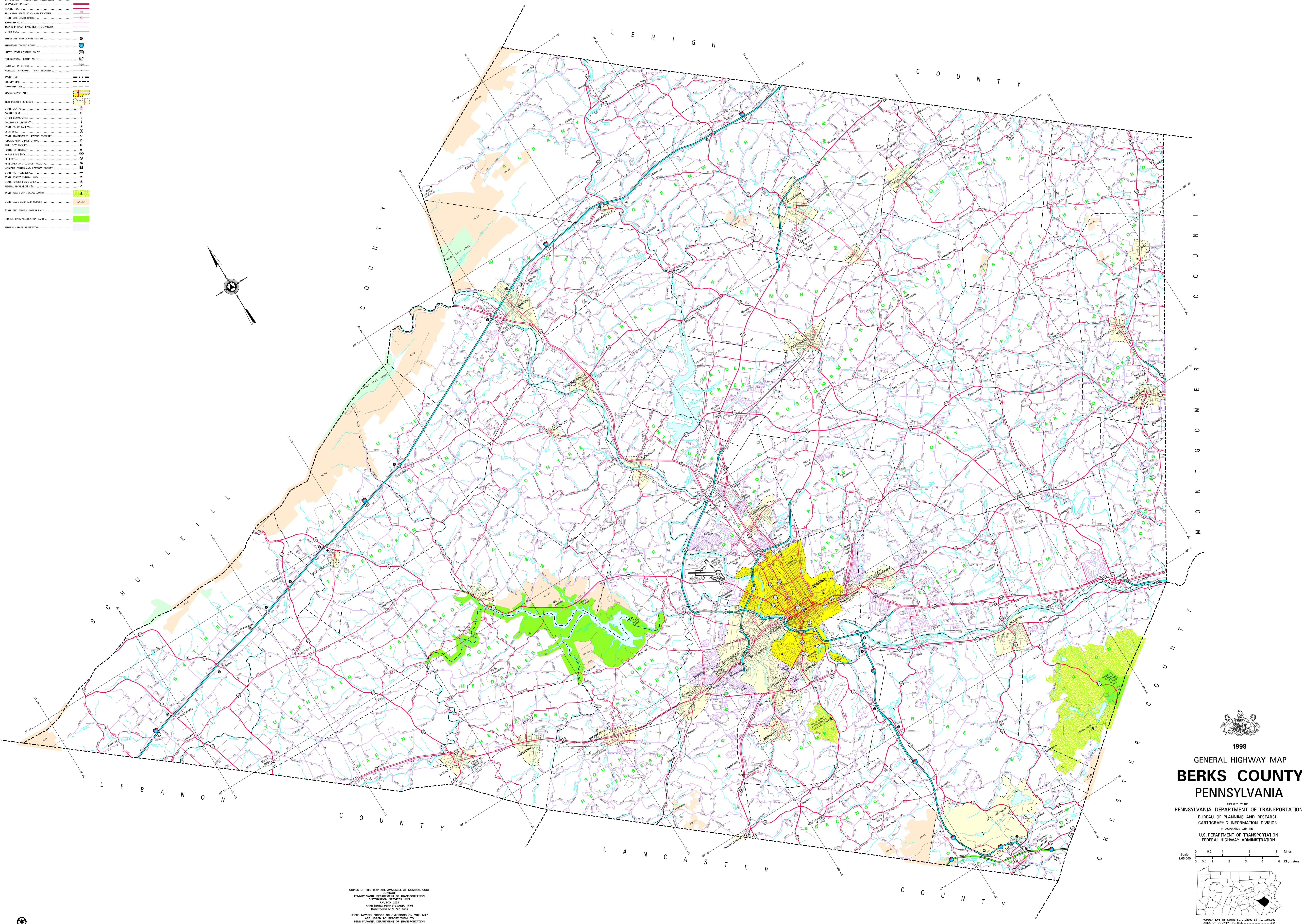
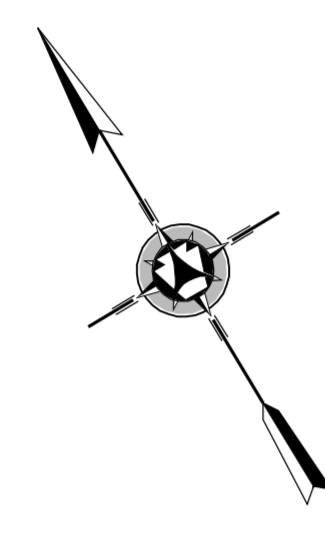
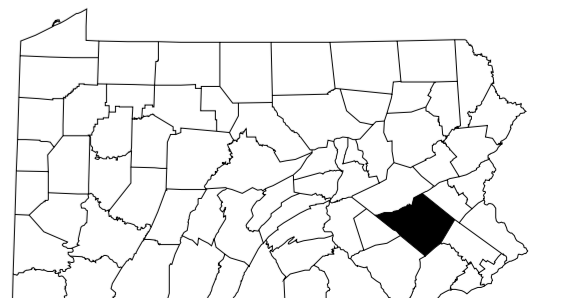
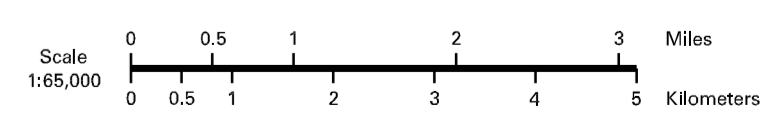


- LEGEND**
- EXTRADJURY - ACCESS FULLY CONTROLLED
 - MULTI-LANE HIGHWAY
 - TRUNK ROUTE
 - POWERS STATE ROAD AND BUSSTOP
 - STATE HIGHWAY BRIDGE
 - TOWNSHIP ROAD
 - TOWNSHIP ROAD (FRAMBLE UNIMPROVED)
 - OTHER ROAD
 - INTERSTATE INTERCHANGE NUMBER
 - UNIMPROVED GRAVEL ROUTE
 - UNIMPROVED GRAVEL ROUTE
 - RECREATIONAL TRAIL ROUTE
 - RAILROAD BY GENESIS
 - RAILROAD MARKED TRACK REMAINS
 - STATE LINE
 - COUNTY LINE
 - TOWNSHIP LINE
 - INCORPORATED VILLAGE
 - INCORPORATED CITY
 - STATE CAPITAL
 - COUNTY SEAT
 - OTHER GOVERNMENT
 - COLLEGE OR UNIVERSITY
 - STATE POLICE FACILITY
 - EMERGENCY
 - STATE ADMINISTERED AIRPORT PROPERTY
 - FEDERAL STATE AIRPORT
 - RENT OUT FACILITY
 - PORT OF INTEREST
 - WORLD WIDE TRUCK
 - REPORT
 - REST AREA AND COMFORT FACILITY
 - NATIONAL GUARD AND COMPANY FACILITY
 - STATE FISH INTEREST
 - STATE FOREST RESERVE AREA
 - STATE FOREST RESERVE AREA
 - FEDERAL RECREATION SITE
 - STATE PARK LAND HEADQUARTERS
 - STATE PARK LAND AND NUMBER
 - STATE AND FEDERAL FOREST LAND
 - FEDERAL PARK / RECREATION LAND
 - FEDERAL STATE RESERVATION



1998
GENERAL HIGHWAY MAP
BERKS COUNTY
PENNSYLVANIA

PREPARED BY THE
 PENNSYLVANIA DEPARTMENT OF TRANSPORTATION
 BUREAU OF PLANNING AND RESEARCH
 CARTOGRAPHIC INFORMATION DIVISION
 IN COOPERATION WITH THE
 U.S. DEPARTMENT OF TRANSPORTATION
 FEDERAL HIGHWAY ADMINISTRATION



POPULATION OF COUNTY 1997 EST. 354,607
 AREA OF COUNTY (SQ. MI.) 684
 (SQ. KM.) 228
 POLYCONIC PROJECTION

COPIES OF THIS MAP ARE AVAILABLE AT NOMINAL COST
 CONTACT
 PENNSYLVANIA DEPARTMENT OF TRANSPORTATION
 DISTRIBUTION SERVICES UNIT
 P.O. BOX 3028
 HARRISBURG, PENNSYLVANIA 17105
 TELEPHONE: (717) 797-6746

USERS NOTING ERRORS OR OMISSIONS ON THIS MAP
 ARE URGED TO REPORT THEM TO
 PENNSYLVANIA DEPARTMENT OF TRANSPORTATION
 CARTOGRAPHIC INFORMATION DIVISION
 905 MARKET STREET - 6TH FLOOR
 HARRISBURG, PENNSYLVANIA 17101 - 1900