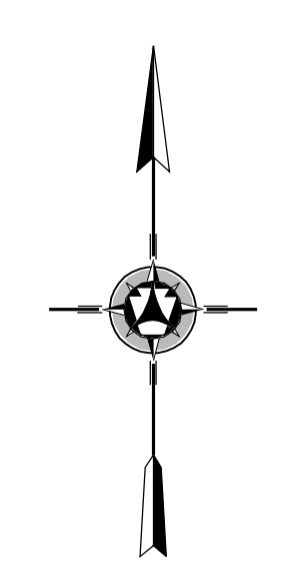
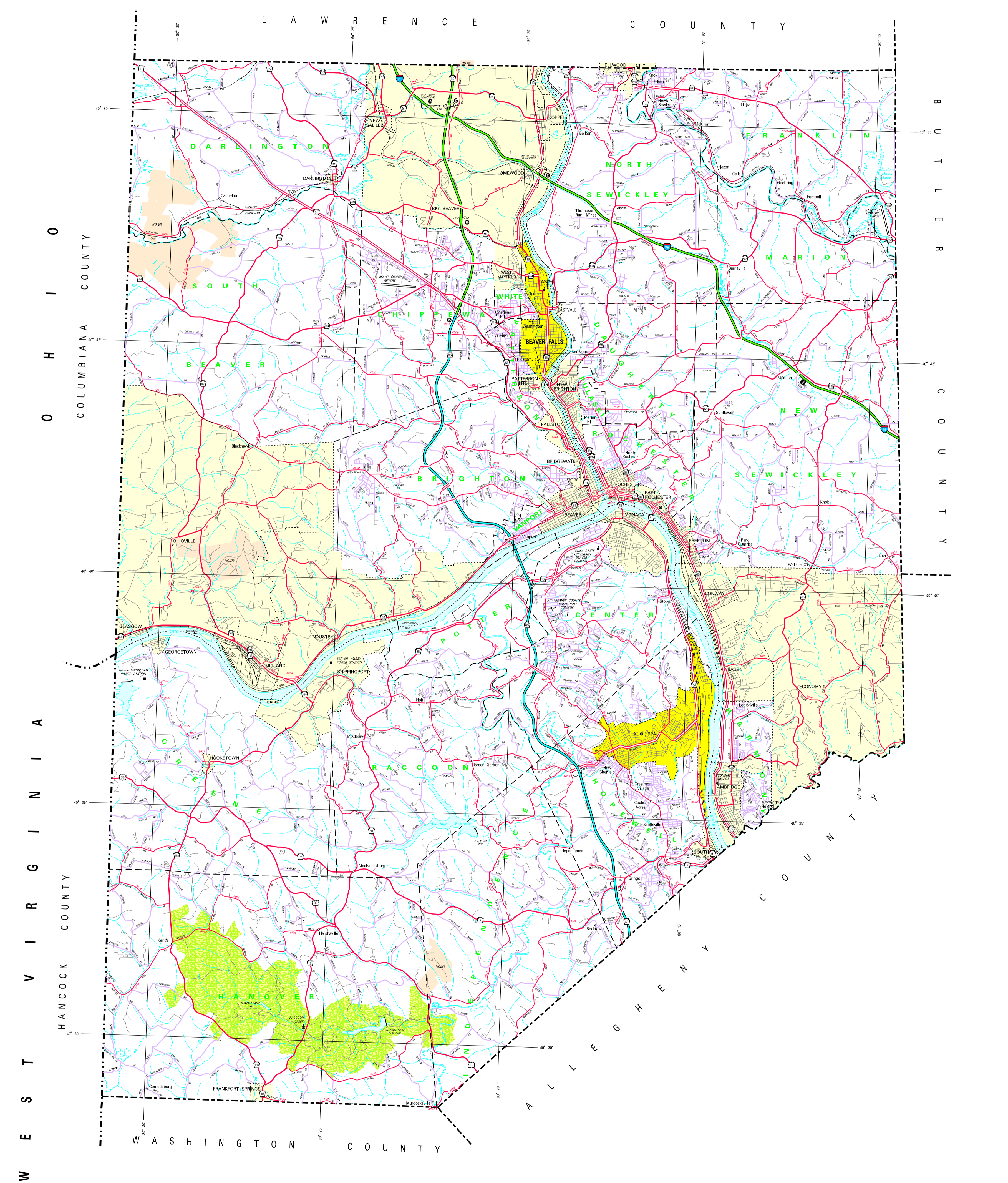
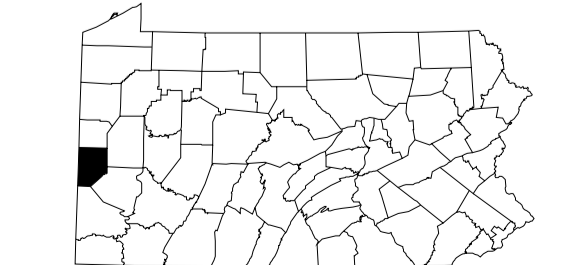
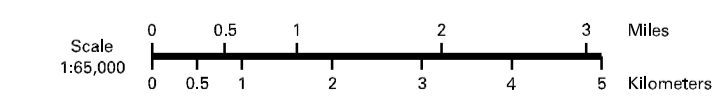


- LEGEND**
- EXPRESSWAY - ACCESS FULLY CONTROLLED
  - MULTILANE HIGHWAY
  - THREE ROAD
  - ROADWAY STATE ROAD AND DESIGNER
  - STATE HIGHWAY BRIDGE
  - TOWNSHIP ROAD (PRIORITY IMPROVED)
  - OTHER ROAD
  - STATEMENT INTERCHANGE NUMBER
  - INTERSTATE TRAFFIC ROUTE
  - UNITED STATES TRAFFIC ROUTE
  - PENNSYLVANIA TRAFFIC ROUTE
  - RAILROAD OR BRIDGE
  - RAILROAD ARRANGED TRAFFY RETURN
  - STATE LINE
  - COUNTY LINE
  - TOWNSHIP LINE
  - INCORPORATED CITY
  - INCORPORATED BOROUGH
  - STATE CAPITAL
  - COUNTY SEAT
  - OTHER COMMUNITIES
  - COLLEGE OR UNIVERSITY
  - STATE TRUST HOUSE
  - STATE ADMINISTERED HISTORIC PROPERTY
  - FEDERAL STATE INSTITUTION
  - PARK OF INTEREST
  - WATER RAIL TRACK
  - RAILROAD
  - RAILROAD AND CONDUIT FACILITY
  - RAILROAD CROSS AND CONDUIT FACILITY
  - STATE HIGHWAY NUMBER
  - STATE TRUST HOUSE
  - STATE TRUST HOUSE AREA
  - FEDERAL RESERVATION SITE
  - STATE PARK LAND - HEADQUARTERS
  - STATE PARK LAND - NUMBER
  - STATE AND FEDERAL POWER LAND
  - FEDERAL PARK RESERVATION LAND
  - FEDERAL RESERVATION



1996  
 GENERAL HIGHWAY MAP  
**BEAVER COUNTY**  
 PENNSYLVANIA

PREPARED BY THE  
 PENNSYLVANIA DEPARTMENT OF TRANSPORTATION  
 CARTOGRAPHIC INFORMATION DIVISION  
IN COOPERATION WITH THE  
 U.S. DEPARTMENT OF TRANSPORTATION  
 FEDERAL HIGHWAY ADMINISTRATION



POPULATION OF COUNTY 1990 Census.....186,090  
 AREA OF COUNTY 850.50 sq. miles.....4,047  
 150.00 sq. kilometers.....1,948  
 POLYCONIC PROJECTION

COPIES OF THIS MAP ARE AVAILABLE AT NOMINAL COST  
 CONTACT:  
 PENNSYLVANIA DEPARTMENT OF TRANSPORTATION  
 DISTRIBUTION SERVICES UNIT  
 150 N. 2ND ST.  
 HARRISBURG, PENNSYLVANIA 17103  
 TELEPHONE: (717) 707-4700

USERS NOTING ERRORS OR OMISSIONS ON THIS MAP  
 ARE REQUESTED TO REPORT THEM TO:  
 PENNSYLVANIA DEPARTMENT OF TRANSPORTATION  
 CARTOGRAPHIC INFORMATION DIVISION  
 665 WALNUT STREET - 6TH FLOOR  
 HARRISBURG, PENNSYLVANIA 17101-1846

COPYRIGHT - COMMONWEALTH OF PENNSYLVANIA  
 DEPARTMENT OF GENERAL SERVICES

Printed on Recycled Paper