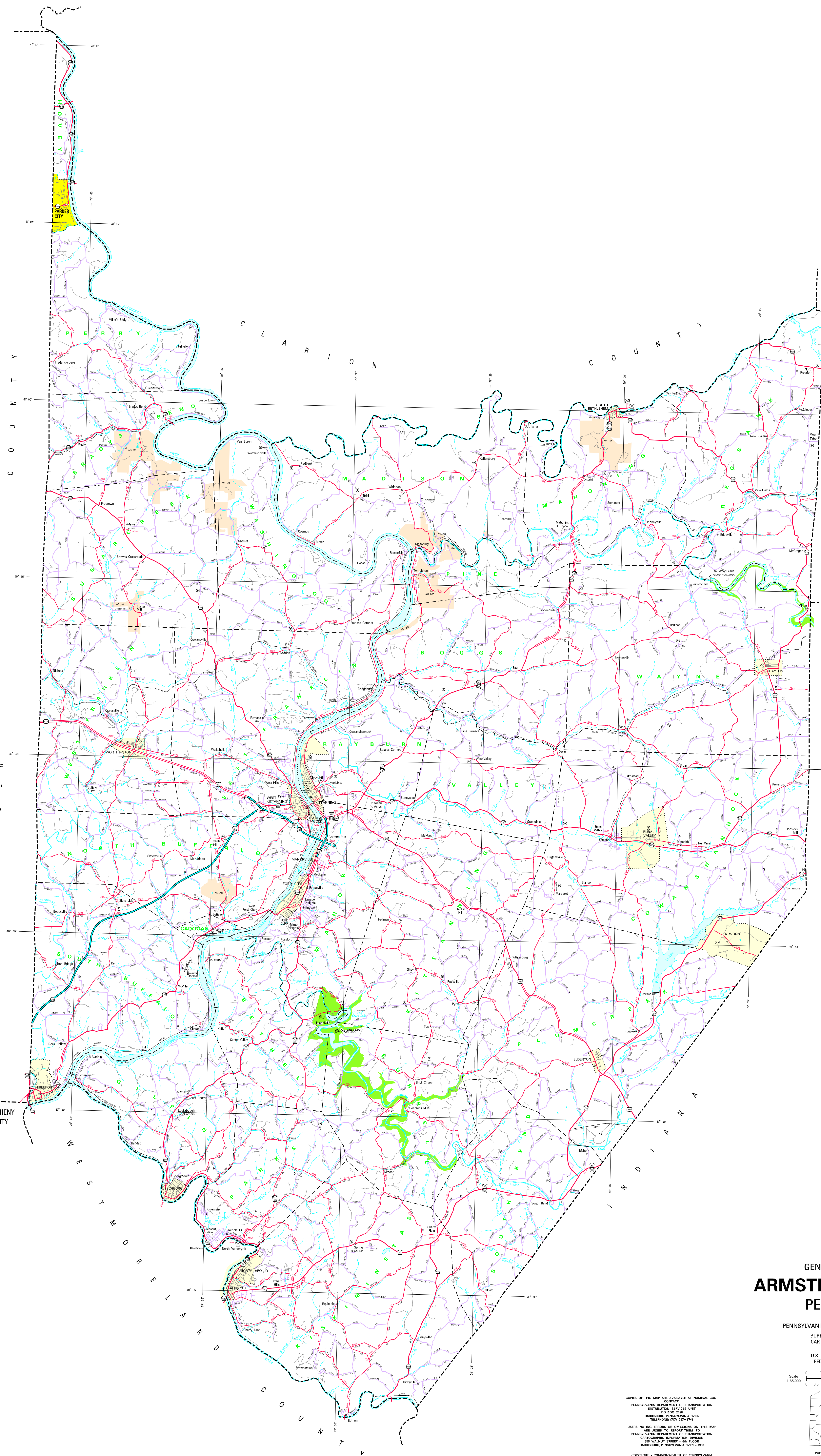


- LEGEND**
- ACCESS RALLY CORRIDOR
 - MULTILANE ROAD
 - TRAIL
 - STATE ROAD AND HIGHWAY
 - STATE MAINTAINED BRIDGE
 - TOWNSHIP ROAD
 - CRACK ROAD
 - INTERSTATE INTERCHANGE NUMBER
 - UNITED STATES TRAFFIC ROUTE
 - PENNSYLVANIA TRAFFIC ROUTE
 - MARSHED IN WATERS
 - MARSHED UNDEVELOPED WATERS
 - STATE LINE
 - COUNTY LINE
 - TOWNSHIP LINE
 - INCORPORATED CITY
 - INCORPORATED BOROUGHS
 - STATE CAPITAL
 - COUNTY SEAT
 - OTHER COMMUNITY
 - COLLEGE OF LIBERAL ARTS
 - STATE POLICE FACILITY
 - COUNTY
 - STATE TRANSFERRED HISTORIC PROPERTY
 - FEDERAL STATE INSTITUTION
 - FISH AND WILDLIFE
 - HORSE RACE TRACK
 - AIRPORT
 - RAIL AREA AND CARPORT FACILITY
 - WOODS OTHER AND CORPUS FACILITY
 - STATE FISH AND WILDLIFE
 - STATE FOREST NATIONAL AREA
 - STATE FOREST ROAD AND
 - FEDERAL RECREATION SITE
 - STATE PARK LAND HEADQUARTERS
 - STATE PARK LAND AND NUMBER
 - STATE AND FEDERAL FOREST LAND
 - FEDERAL PARK RECREATION LAND
 - FEDERAL RESERVATION



ALLEGHENY COUNTY

WESTMORELAND COUNTY

JUNIATA COUNTY

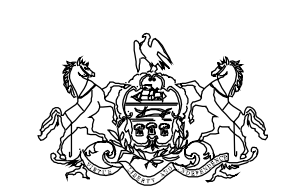
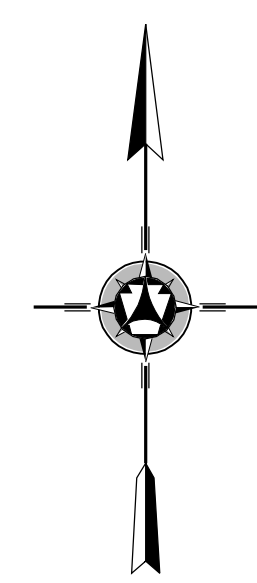
JUNIATA COUNTY

WAYNE COUNTY

CLARION COUNTY

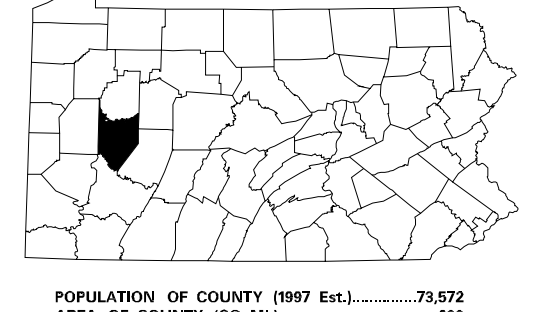
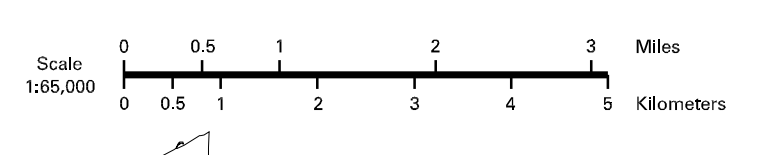
JEFFERSON COUNTY

ARMSTRONG COUNTY



1999
GENERAL HIGHWAY MAP
ARMSTRONG COUNTY
PENNSYLVANIA

PREPARED BY THE
 PENNSYLVANIA DEPARTMENT OF TRANSPORTATION
 BUREAU OF PLANNING AND RESEARCH
 CARTOGRAPHIC INFORMATION DIVISION
 IN COOPERATION WITH THE
 U.S. DEPARTMENT OF TRANSPORTATION
 FEDERAL HIGHWAY ADMINISTRATION



COPIES OF THIS MAP ARE AVAILABLE AT NOMINAL COST
 CONTACT:
 PENNSYLVANIA DEPARTMENT OF TRANSPORTATION
 DISTRIBUTION SERVICES UNIT
 P.O. BOX 2028
 HARRISBURG, PENNSYLVANIA 17163
 TELEPHONE: (717) 787-8746

USERS NOTING ERRORS OR OMISSIONS ON THIS MAP
 ARE URGED TO REPORT THEM TO
 PENNSYLVANIA DEPARTMENT OF TRANSPORTATION
 CARTOGRAPHIC INFORMATION DIVISION
 100 WALNUT STREET - 4TH FLOOR
 HARRISBURG, PENNSYLVANIA 17101-1900

COPYRIGHT - COMMONWEALTH OF PENNSYLVANIA
 DEPARTMENT OF GENERAL SERVICES

POPULATION OF COUNTY (1990) 125,722
 AREA OF COUNTY (SQ. MI.) 1,080
 (SQ. KM.) 2,800

POLYCONIC PROJECTION