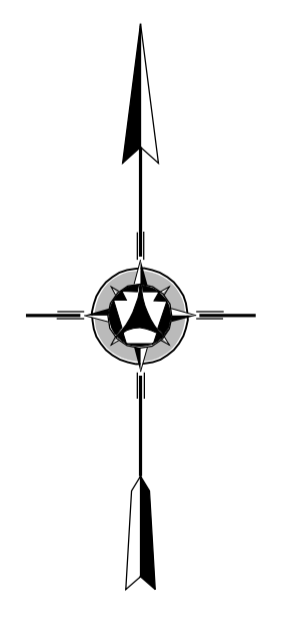
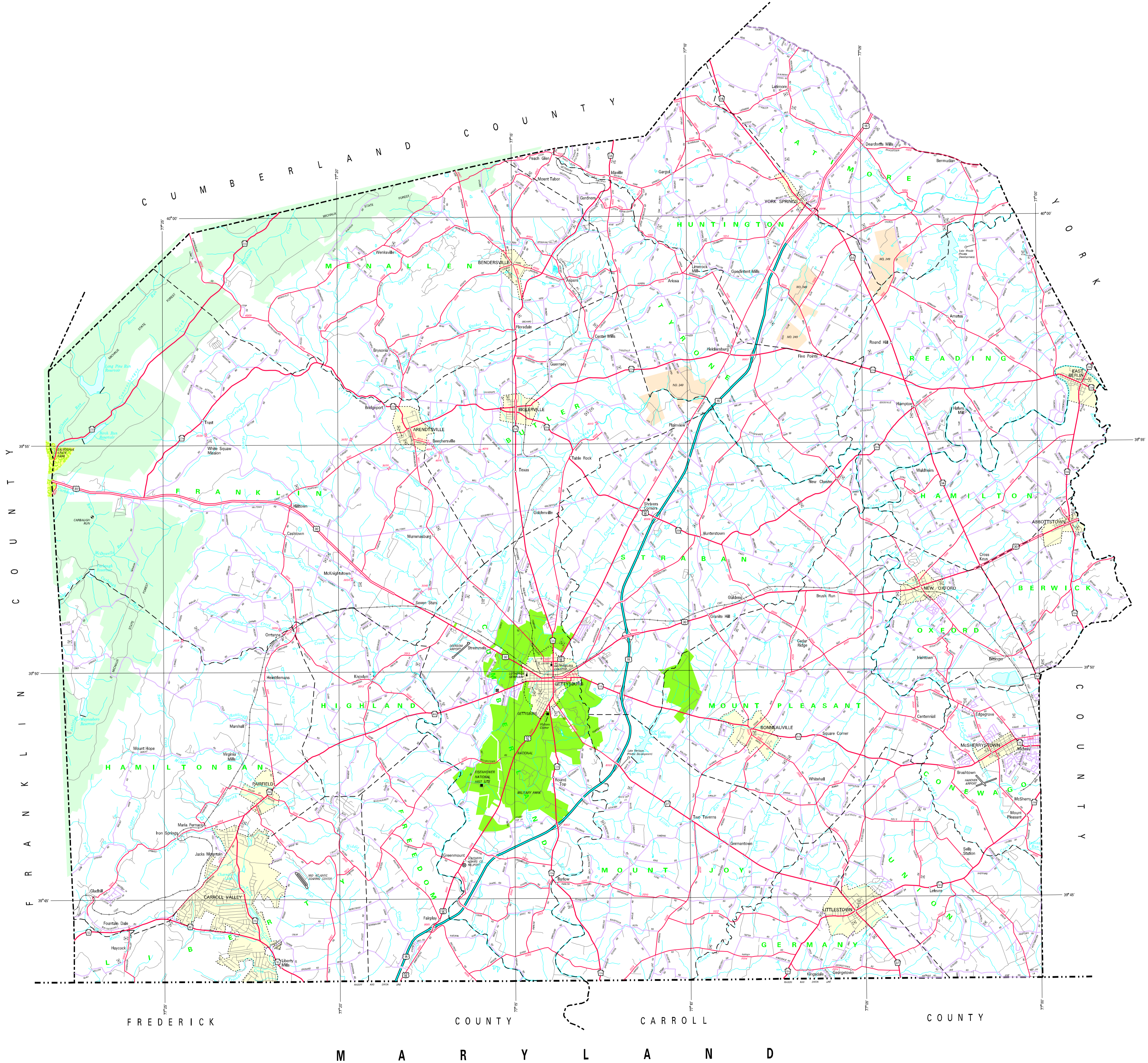
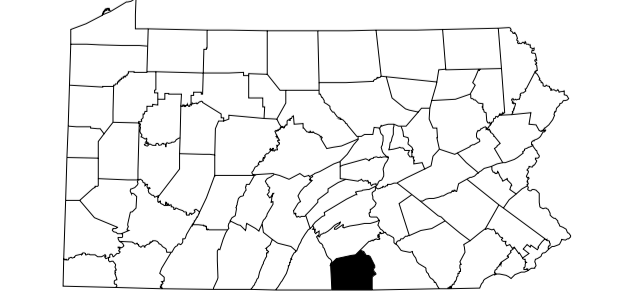
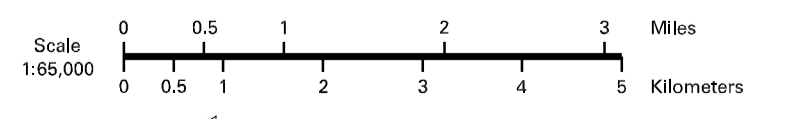


- LEGEND**
- EXPRESSWAY - FULLY CONTROLLED
  - MULTI-LANE HIGHWAY
  - TRAFFIC ROUTE
  - PRIMARY STATE ROAD AND EXPRESS
  - STATE MAINTAINED BRIDGE
  - TRANSFER ROAD
  - TRANSFER ROAD (FUTURE UNIMPROVED)
  - OTHER ROAD
  - INTERSTATE HIGHWAY NUMBER
  - INTERSTATE TRAFFIC ROUTE
  - USPS EXPRESS ROUTE
  - FEDERAL MAIL ROUTE
  - RAILROAD BY SIGNAL
  - RAILROAD ABANDONED TRACK REMAINS
  - STATE LINE
  - COUNTY LINE
  - TOWNSHIP LINE
  - INCORPORATED CITY
  - INCORPORATED BOROUGH
  - STATE CAPITAL
  - COUNTY SEAT
  - OTHER GOVERNMENT
  - COLLEGE OR UNIVERSITY
  - STATE POLICE FACILITY
  - CENSUS
  - STATE ADMINISTERED HISTORIC PROPERTY
  - FEDERAL HISTORIC MONUMENT
  - FROM DOT FACILITY
  - PORTS OF IMPORT
  - WORLD WARE TRAIL
  - WORLD WARE
  - REST AREA AND CONVENT FACILITY
  - WELFARE CENTER AND CONVENT FACILITY
  - STATE FISH HATCHERY
  - STATE FOREST NATURAL AREA
  - STATE FOREST FENCING AREA
  - FEDERAL RECREATION SITE
  - STATE PARK LAND HEADQUARTERS
  - STATE GAME LAND AREA NUMBER
  - STATE AND FEDERAL FOREST LAND
  - FEDERAL PARK RECREATION LAND
  - FEDERAL STATE RESERVATION



1999  
**GENERAL HIGHWAY MAP**  
**ADAMS COUNTY**  
**PENNSYLVANIA**

PREPARED BY THE  
**PENNSYLVANIA DEPARTMENT OF TRANSPORTATION**  
 BUREAU OF PLANNING AND RESEARCH  
 CARTOGRAPHIC INFORMATION DIVISION  
 IN COOPERATION WITH THE  
 U.S. DEPARTMENT OF TRANSPORTATION  
 FEDERAL HIGHWAY ADMINISTRATION



COPIES OF THIS MAP ARE AVAILABLE AT NOMINAL COST  
 CONTACT:  
 PENNSYLVANIA DEPARTMENT OF TRANSPORTATION  
 DISTRIBUTION SERVICES UNIT  
 P.O. BOX 3028  
 HARRISBURG, PENNSYLVANIA 17105  
 TELEPHONE (717) 767-6246

USERS NOTING ERRORS OR OMISSIONS ON THIS MAP  
 ARE REQUESTED TO REPORT THEM TO:  
 PENNSYLVANIA DEPARTMENT OF TRANSPORTATION  
 CARTOGRAPHIC INFORMATION DIVISION  
 626 WALNUT STREET - 8TH FLOOR  
 HARRISBURG, PENNSYLVANIA 17101 - 1860

COPYRIGHT - COMMONWEALTH OF PENNSYLVANIA  
 DEPARTMENT OF GENERAL SERVICES

Printed on Recycled Paper