

# Classified Point Cloud

## Deliverable 1 Summary

✓ General		
Folder:	H:\USGS_Allentown_PA_LiDAR\Classified_LAS	
Total # of Files:	129	(All Valid)
Total File Size:	33.1 GB	(35,509,132,584 bytes)

✓ Tile Sizes	
Median Tile Size:	2,500' x 2,500'
Minimum Tile Size:	2,500' x 2,500'
Maximum Tile Size:	2,500' x 2,500'
X Range:	2577500.01' to 2617500.00'
Y Range:	450000.00' to 484999.99'
Elevation Range:	-2965.98' to 1172.10'

✓ LAS Version And Point Record Formats	
v1.4, Point Record Format 6	129 of 129 Tiles

✓ Spatial Reference System		
Horizontal Projection	NAD83(2011) / Pennsylvania South (ftUS)	129 of 129 Tiles
Horizontal Datum	NAD83 (National Spatial Reference System 2011)	129 of 129 Tiles
Horizontal Units	US survey foot	129 of 129 Tiles
Vertical Datum	NAVD88 height (ftUS)	129 of 129 Tiles
Vertical Units	US survey foot	129 of 129 Tiles
Storage Method	WKT	129 of 129 Tiles

✓ GPS Time Type	
Adjusted	129 of 129 Tiles

✓ File Source ID Equals 0	
Yes	129 of 129 Tiles

✓ VLR/EVLR Reserved Equals 0	
Yes	375 of 375 Records

✓ Unnecessary Bytes At End Of File	
No	129 of 129 Tiles

✓ Legacy Point Count Check	
Zero	129 of 129 Tiles

✓ System Identifier	
Quantum Spatial	129 of 129 Tiles

✓ Generating Software	
LiDAR Suite	129 of 129 Tiles

# Classified Point Cloud Continued...

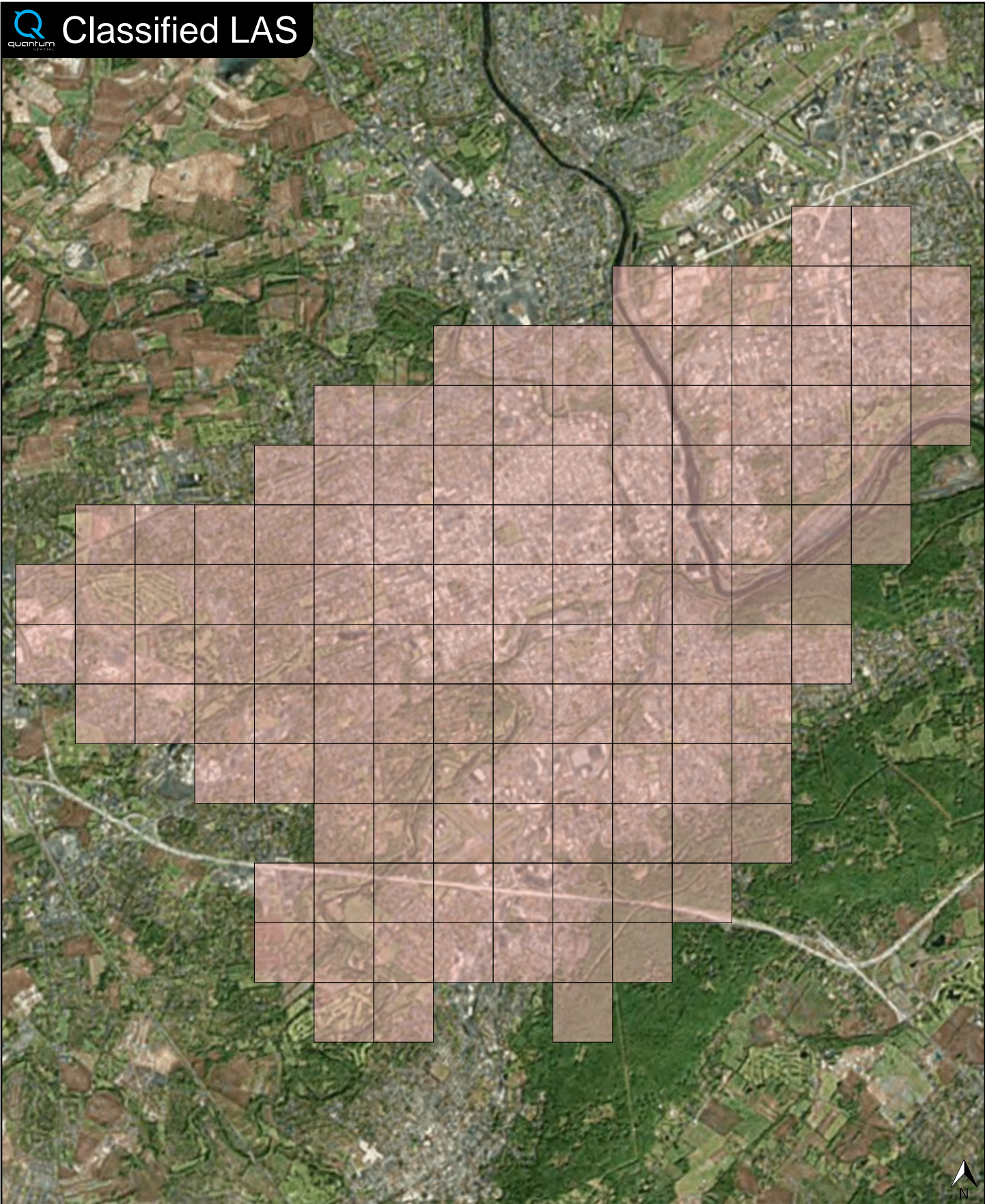
## Deliverable 1 Summary

Point Classifications		
Class 1	46.57%	551,158,290 Points
Class 2	53.21%	629,809,538 Points
Class 7	0.04%	443,954 Points
Class 9	0.12%	1,416,443 Points
Class 10	0.01%	93,931 Points
Class 17	0.06%	694,974 Points
Class 18	0.00%	13,591 Points

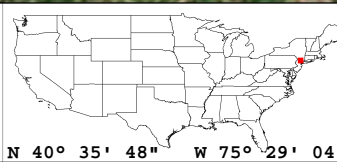
✓ Point Statistics	
Scan Angle:	-38 to 44
Intensity:	0 to 65535
First Date:	3/26/2016 7:59:56 PM
Last Date:	3/26/2016 10:57:39 PM



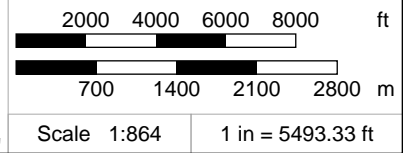
# Classified LAS



Classified LAS Tiles (129)



N 40° 35' 48" W 75° 29' 04"

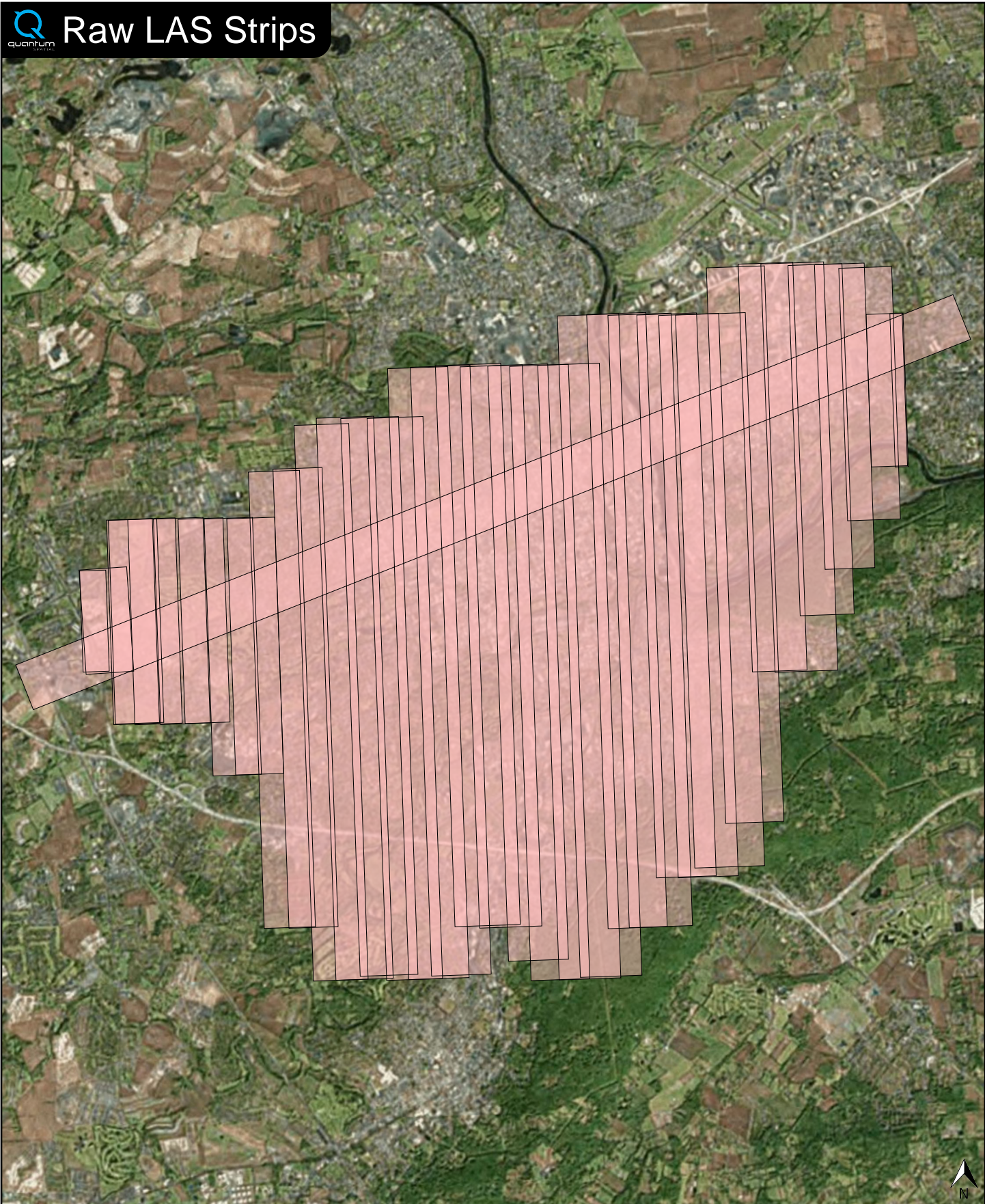




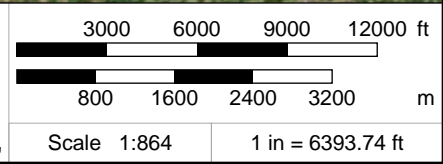
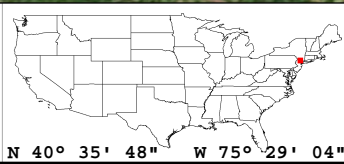
# Raw LAS Flight Line Strips

## Deliverable 2 Summary

<b>✓ General</b>		
Folder:	H:\USGS_Allentown_PA_LiDAR\Unclassified_Calibrated_Flightline_Swath_LAS	
Total # of Files:	37	(All Valid)
Total File Size:	35.2 GB	(37,823,604,964 bytes)
<b>✓ Raw LAS Strips</b>		
Elevation Range:	-2966' to 1172'	
Total FL Length:	150 miles	
Avg FL Length:	4 miles	
Min FL Length:	1 miles (00134)	
Max FL Length:	9 miles (00900)	
<b>✓ LAS Version And Point Record Formats</b>		
v1.4, Point Record Format 6	37 of 37 Strips	
<b>✓ Spatial Reference System</b>		
Horizontal Projection	NAD83(2011) / Pennsylvania South (ftUS)	37 of 37 Strips
Horizontal Datum	NAD83 (National Spatial Reference System 2011)	37 of 37 Strips
Horizontal Units	US survey foot	37 of 37 Strips
Vertical Datum	NAVD88 height (ftUS)	37 of 37 Strips
Vertical Units	US survey foot	37 of 37 Strips
Storage Method	WKT	37 of 37 Strips
<b>✓ GPS Time Type</b>		
Adjusted	37 of 37 Strips	
<b>✓ File Source IDs</b>		
Equals Zero:	None	
All Unique:	Yes	
FLs:	100 - 135, 900	
<b>✓ VLR/EVLR Reserved Equals 0</b>		
Yes	101 of 101 Records	
<b>✓ Unnecessary Bytes At End Of File</b>		
No	37 of 37 Strips	
<b>✓ Legacy Point Count Check</b>		
Zero	37 of 37 Strips	
<b>✓ System Identifier</b>		
Quantum Spatial	37 of 37 Strips	
<b>✓ Generating Software</b>		
LiDAR Suite	37 of 37 Strips	



FL Strips (37)



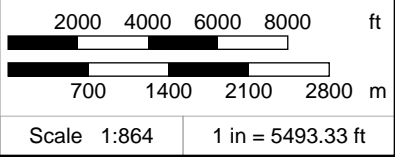
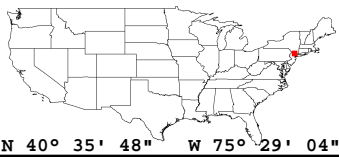
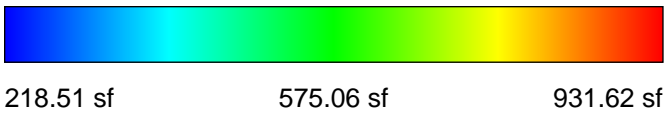
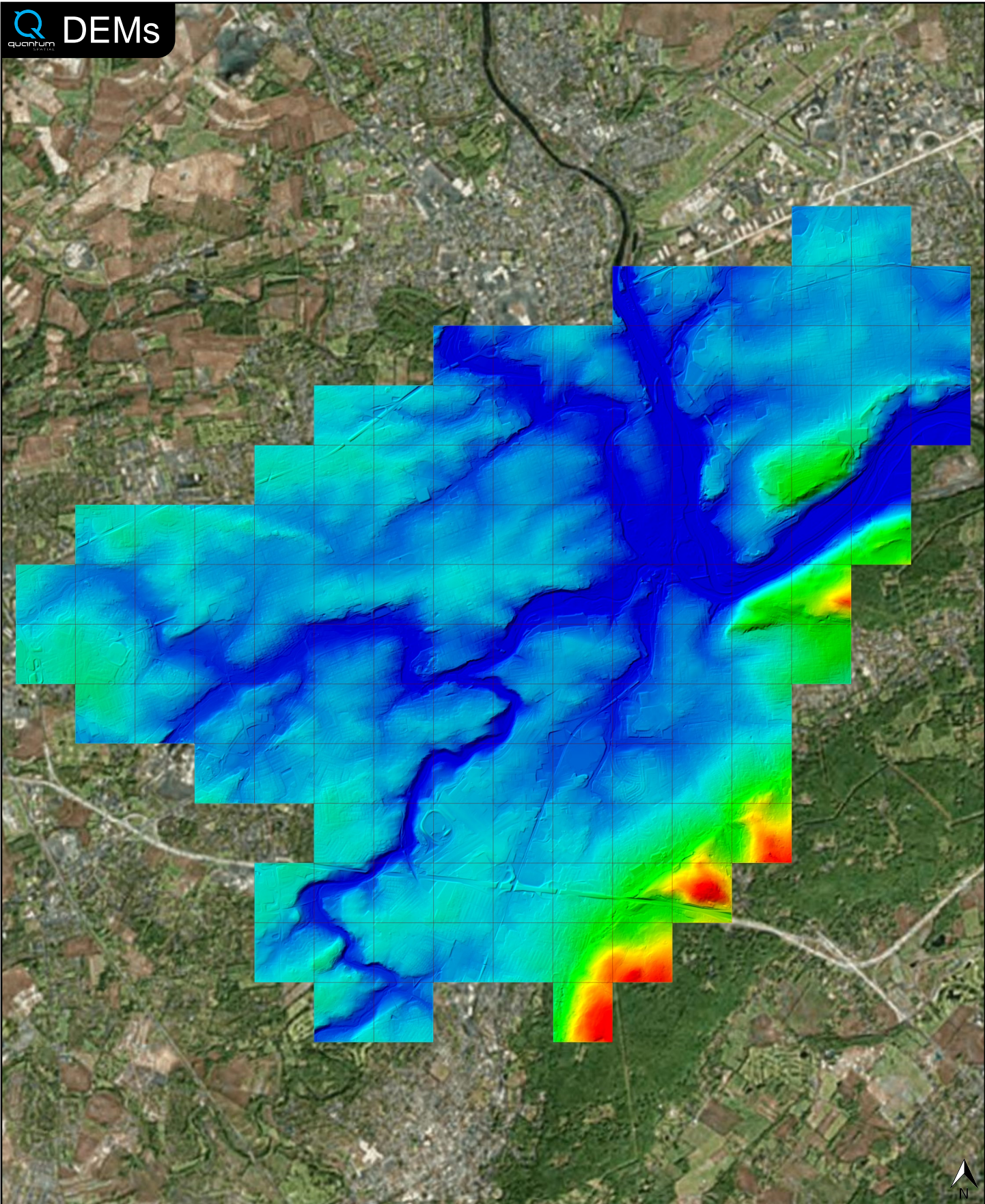


✓ General		
Folder:	H:\USGS_Allentown_PA_LiDAR\Raster_DEM\Tiled_DEM	
Total # of Files:	129	(All Valid)
Total File Size:	3.2 GB	(3,385,550,430 bytes)

✓ Tile Sizes		
Median Tile Size:	2,500' x 2,500'	
Minimum Tile Size:	2,500' x 2,500'	
Maximum Tile Size:	2,500' x 2,500'	
X Range:	2577500.00' to 2617500.00'	
Y Range:	450000.00' to 485000.00'	
Elevation Range:	218.40' to 933.51'	

✓ Spatial Reference System		
Horizontal Projection	NAD_1983_2011_StatePlane_Pennsylvania_South_FIPS_3702_Ft_US	129 of 129 Tiles
Horizontal Datum	D_NAD_1983_2011	129 of 129 Tiles
Horizontal Units	Foot_US	129 of 129 Tiles
Vertical Datum	NAVD88 height (ftUS)	129 of 129 Tiles
Vertical Units	Foot_US	129 of 129 Tiles

✓ Raster		
File Type:	IMG	129 of 129
Bands:	1	129 of 129
Grid Size (pixels):	2500 x 2500	129 of 129
Pixel Resolution:	1.00000000' x 1.00000000'	129 of 129
Pixel Type:	32-bit Floating Point	129 of 129
Compression:	None	129 of 129
No Data Value:	-32767	129 of 129





✓ General		
Folder:	H:\USGS_Allentown_PA_LiDAR\Intensity_Images	
Total # of Files:	129	(All Valid)
Total File Size:	1.1 GB	(1,143,948,264 bytes)

✓ Tile Sizes		
Median Tile Size:	2,500' x 2,500'	
Minimum Tile Size:	2,500' x 2,500'	
Maximum Tile Size:	2,500' x 2,500'	
X Range:	2577500.00' to 2617500.00'	
Y Range:	450000.00' to 485000.00'	

✓ Spatial Reference System			
Horizontal Projection	NAD_1983_2011_StatePlane_Pennsylvania_South_FIPS_3702_Ft_US		129 of 129 Tiles
Horizontal Datum	NAD_1983_2011		129 of 129 Tiles
Horizontal Units	Foot_US		129 of 129 Tiles
Vertical Datum	NAVD88 height (ftUS)		129 of 129 Tiles
Vertical Units	Foot_US		129 of 129 Tiles

✓ Raster		
File Type:	TIF	129 of 129
Bands:	1	129 of 129
Grid Size (pixels):	2500 x 2500	129 of 129
Pixel Resolution:	1.00000000' x 1.00000000'	129 of 129
Pixel Type:	8-bit Unsigned Integer (MINISBLACK)	129 of 129
Compression:	NONE	129 of 129
No Data Value:	NONE	129 of 129



