

UNITED STATES
DEPARTMENT OF THE INTERIOR
GEOLOGICAL SURVEY

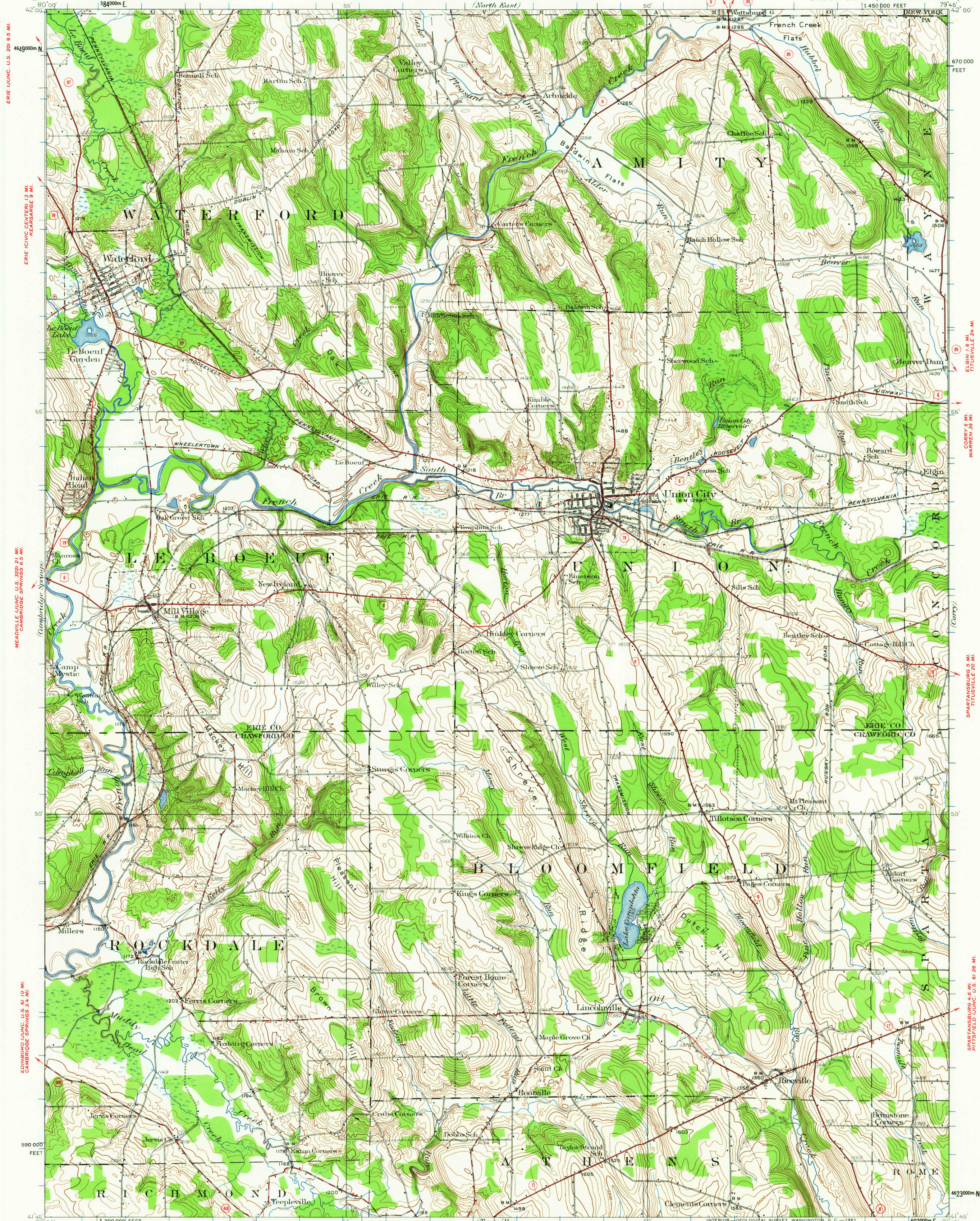
STATE OF PENNSYLVANIA
REPRESENTED BY THE
DEPARTMENT OF INTERNAL AFFAIRS
TOPOGRAPHIC AND GEOLOGIC SURVEY

ERIE (CIVIC CENTER) 19 MI.
LOWVILLE 2 MI.

NORTH EAST 15 MI.
LOWVILLE 1.7 MI.

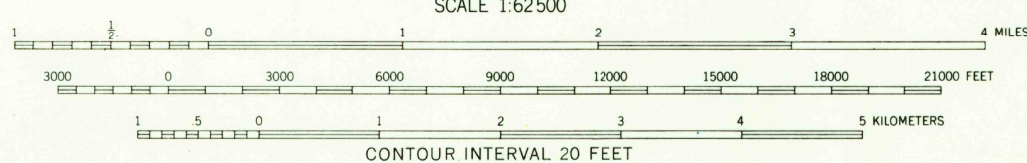
PENNSYLVANIA - NEW YORK
UNION CITY QUADRANGLE
1:450,000 FEET

NEW YORK
79 45' 42" 00"



Topography by C.W. Goodlove, J.K. Bailey, Paul Blake,
W.A. Fisher, and L.A. McGinn
Surveyed in 1929

ROAD CLASSIFICATION
Heavy-duty ——— Light-duty ———
Medium-duty ——— Unimproved dirt ———
U.S. Route ——— State Route ———



Polyconic projection. 1927 North American datum
10,000-foot grid based on Pennsylvania (North)
rectangular coordinate system
1000-meter Universal Transverse Mercator grid ticks,
zone 17, shown in blue

UNION CITY, PA. - N. Y.
N 4145 - W 7945 / 15

1929