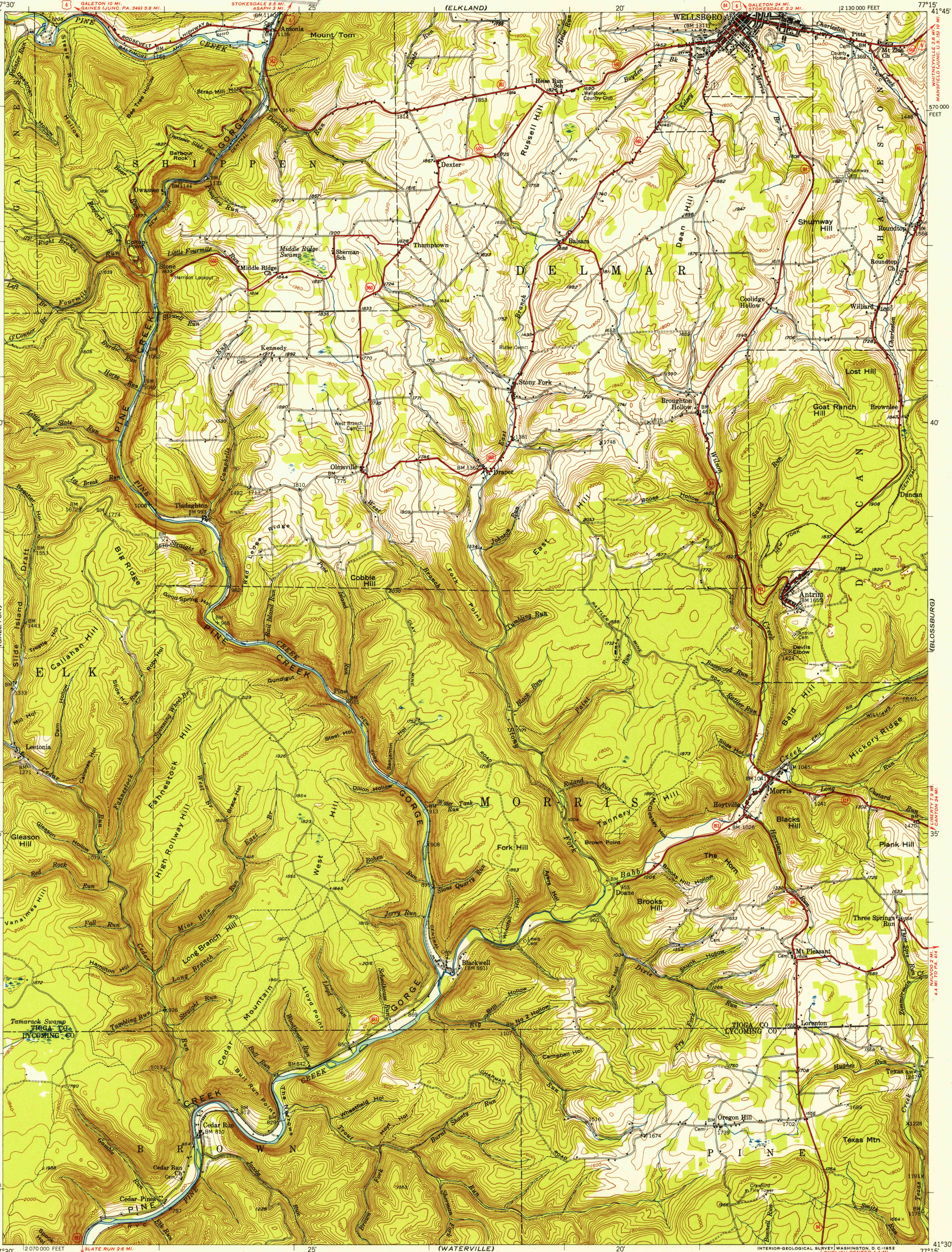
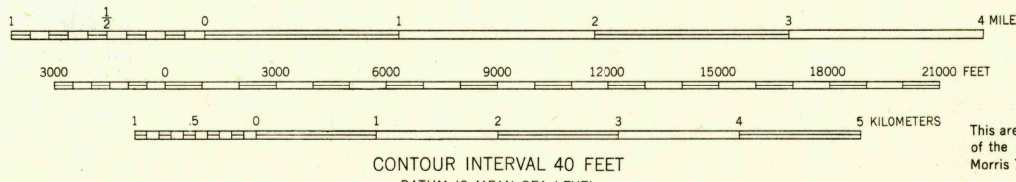


U.S.G.S.
FILE COPY



Mapped, edited, and published by the Geological Survey
Control by USGS and USC&GS
Topography from aerial photographs by multiplex methods
Aerial photographs taken 1944. Field check 1946
Polyconic projection. 1927 North American datum
10,000-foot grid based on Pennsylvania coordinate system,
north zone

TRUE NORTH
MAGNETIC NORTH
APPROXIMATE MEAN
DECLINATION, 1946



CONTOUR INTERVAL 40 FEET
DATUM IS MEAN SEA LEVEL

ROAD CLASSIFICATION
Heavy-duty ——— 2 LANE 16 LANE
Medium-duty ——— 2 LANE 16 LANE
Light-duty ———
Unimproved dirt ———
U. S. Route ———
State Route ———

This area is also covered by 1:24,000 scale maps
of the Antrim, Tidioute, Cedar Run, and
Morris 7.5 minute quadrangles

THIS MAP COMPLIES WITH NATIONAL MAP ACCURACY STANDARDS
FOR SALE BY U. S. GEOLOGICAL SURVEY, WASHINGTON 25, D. C.
A FOLDER DESCRIBING TOPOGRAPHIC MAPS AND SYMBOLS IS AVAILABLE ON REQUEST

U.S.G.S.
Historical File
Topographic Division
FILE COPY

ANTRIM, PA.
N4130-W7715/15

1946

SEP 12 1952

3135