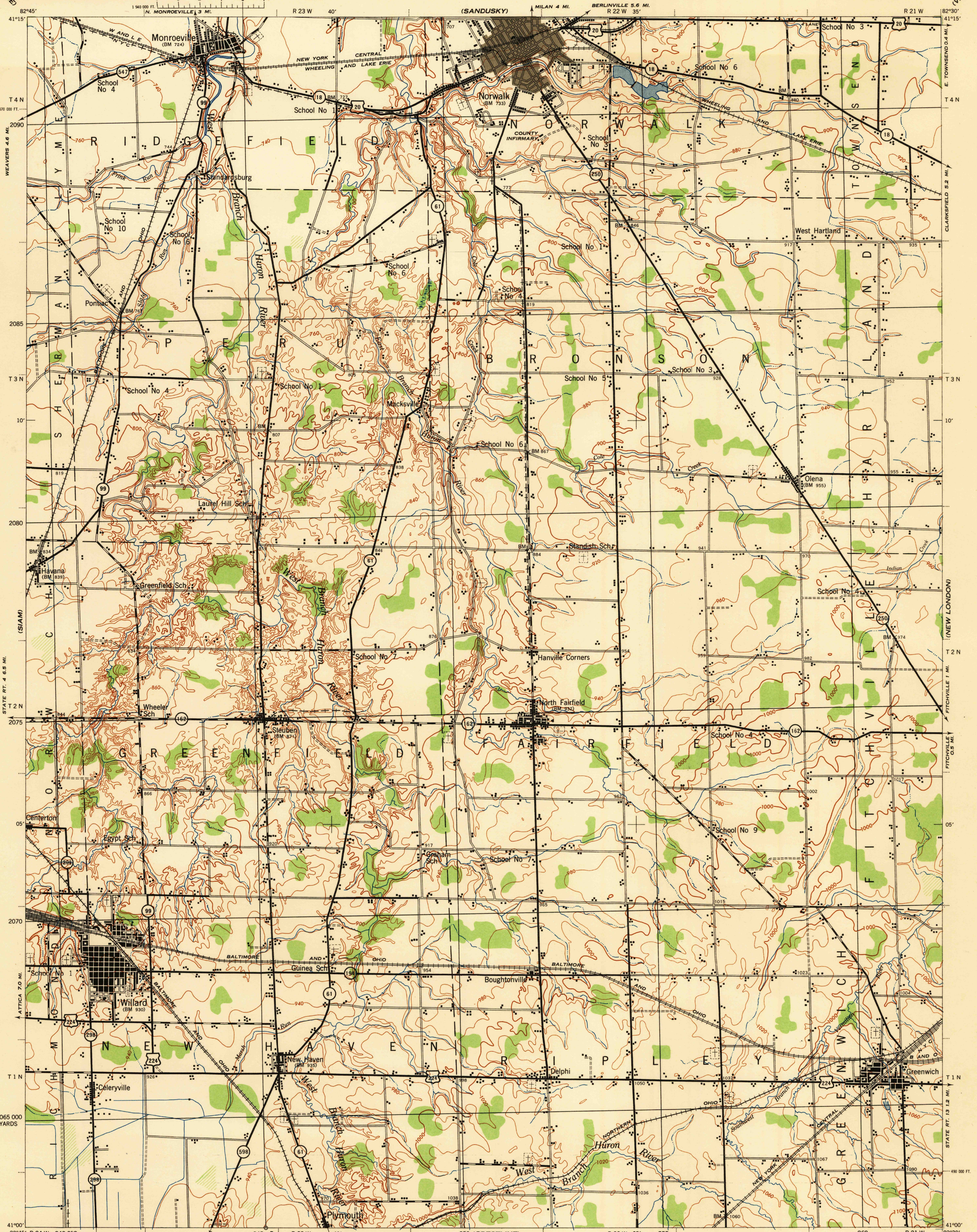


OHIO 1:62,500
HURON COUNTY

WAR DEPARTMENT
CORPS OF ENGINEERS, U. S. ARMY

FIRST EDITION-AMS 1

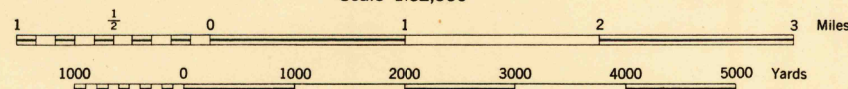
NORWALK QUADRANGLE
15 MINUTE SERIES



First Edition (AMS 1), 1944

Prepared under the direction of the Chief of Engineers, U. S. Army, by the
Army Map Service (AMS), U. S. Army, Washington, D. C., 1944.
Based on U. S. G. S. Quadrangle, Norwalk, 1:62,500 (1915).
Control by U. S. Geological Survey.
Surveyed in cooperation with the State of Ohio, 1913.
Revised from single lens vertical aerial photographs.
Aerial Photography by U. S. Army Air Force, 1943.
Polyconic Projection, North American Datum.

ROAD CLASSIFICATION 1942
Dependable hard surface, heavy-duty road. ——— Loose surface, graded, heavy-duty road. ——— U. S. Route
Secondary, hard surface, all-weather road. ——— Dirt road. ——— State Route
More than two lanes indicated by tick along road with tick at point of change. ——— 3 LANE 4 LANE



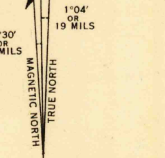
CONTOUR INTERVAL 20 FEET
DATUM IS MEAN SEA LEVEL

HISTORICAL FILES

(DO NOT REMOVE)

THE LAST THREE DIGITS OF THE GRID NUMBERS ARE OMITTED
THE OHIO STATE GRID ZONE NORTH, IS INDICATED BY DOTTED TICK
OUTSIDE THE NEAT LINE AT 10,000 FOOT INTERVALS

NOTE: OFFICERS USING THIS MAP WILL MAKE PERSONAL CORRECTIONS AND ADDITIONS, WHICH COPY
TO THEIR ATTENTION AND MAIL DIRECT TO THE CHIEF OF ENGINEERS, WASHINGTON, D. C.



LEGEND
BRUSH

NORWALK, OHIO
N4100-W8230/15