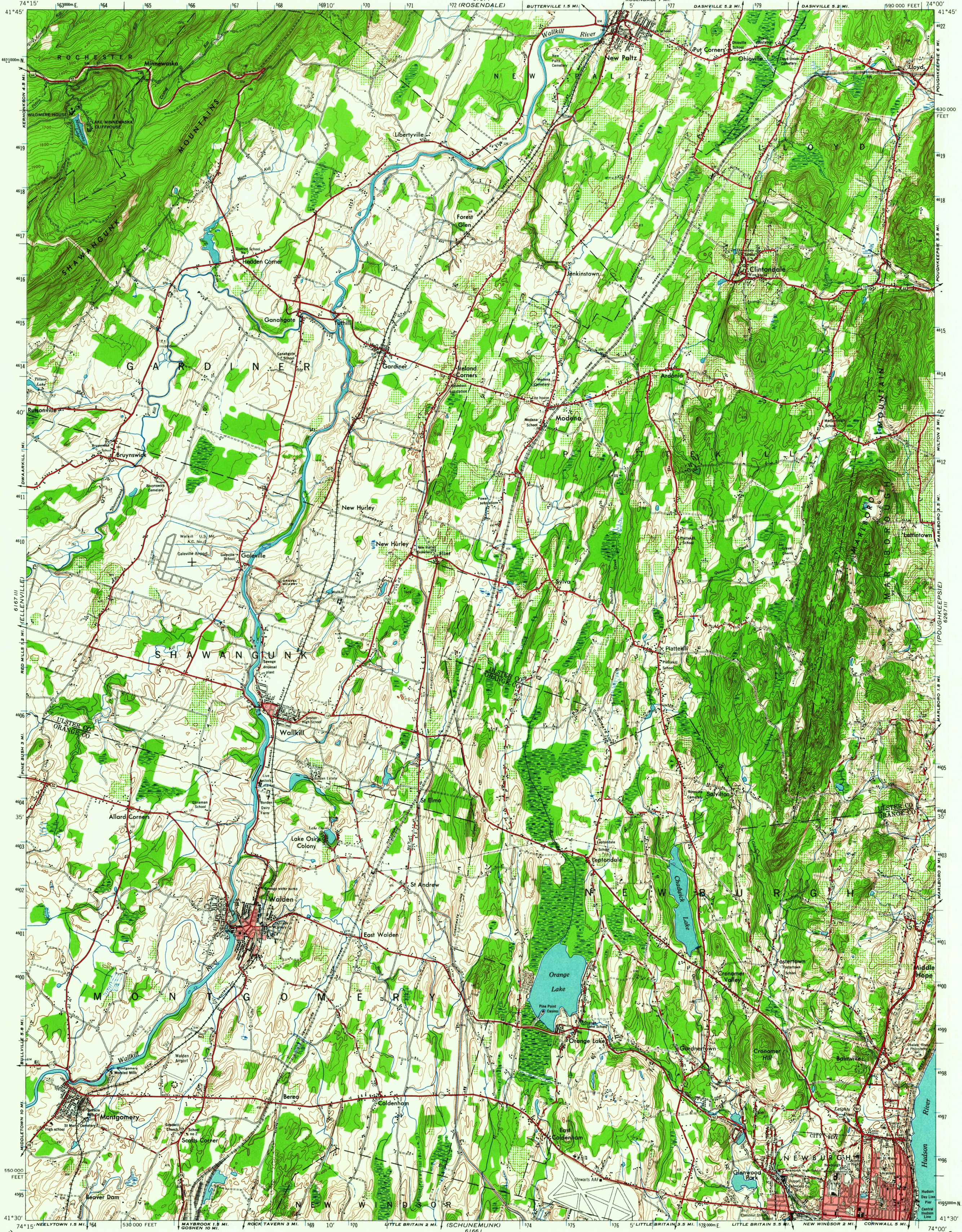


WAR DEPARTMENT
CORPS OF ENGINEERS, U. S. ARMY

NEWBURGH QUADRANGLE
NEW YORK
15 MINUTE SERIES (TOPOGRAPHIC)



Prepared under the direction of the Chief of Engineers by the Army Map Service (AM), U. S. Army, Washington, D. C. Compiled in 1946 from: New York, 1:31,680, Corps of Engineers, U. S. Army, Walden, Gardiner, Clintonville and Newburgh North, 1943. Planimetric detail revised from aerial photography by photo planimetric methods. Aerial photography by U. S. Army Air Force, 1946. Roads classified from county maps prepared by Public Roads Administration, 1946. Horizontal and vertical control by U. S. Coast and Geodetic Survey. Planimetry and road classification for southeast quarter field checked by the United States Military Academy, 10,000-foot grid, New York plane coordinate system, east zone, shown in black. 1000-meter grid ticks, Universal Transverse Mercator system, zone 18, shown in blue.

LEGEND
Tint indicates areas in which only landmark buildings are shown.
ROAD DATA 1946
Hard surface, heavy duty road, more than two lanes wide; Federal route marker
Hard surface, heavy duty road, two lanes wide; State route marker
Hard surface, all weather road, two lanes wide
Loose surface, graded, all weather road
Loose surface, dry weather, or dirt road
Trail

SCALE 1:62,500
CONTOUR INTERVAL 20 FEET
DATUM IS MEAN SEA LEVEL
TRANSVERSE MERCATOR PROJECTION
1927 NORTH AMERICAN DATUM
REPRINTED FROM MILITARY EDITION FOR CIVIL USE
FOR SALE BY U. S. GEOLOGICAL SURVEY, WASHINGTON 25, D. C.
A FOLDER DESCRIBING TOPOGRAPHIC MAPS AND SYMBOLS IS AVAILABLE ON REQUEST

USGS
Historical File
Topographic Division
UTM GRID AND 1946 MAGNETIC NORTH DECLINATION AT CENTER OF SHEET
12° 30' 222 MILS
0° 35' 10 MILS

USGS
FILE COPY
TOPOGRAPHIC DIVISION

NEWBURGH, N. Y.
N4130-W7400/15
1946
AMS 6167 II-SERIES V721

May 25, 1964
3020