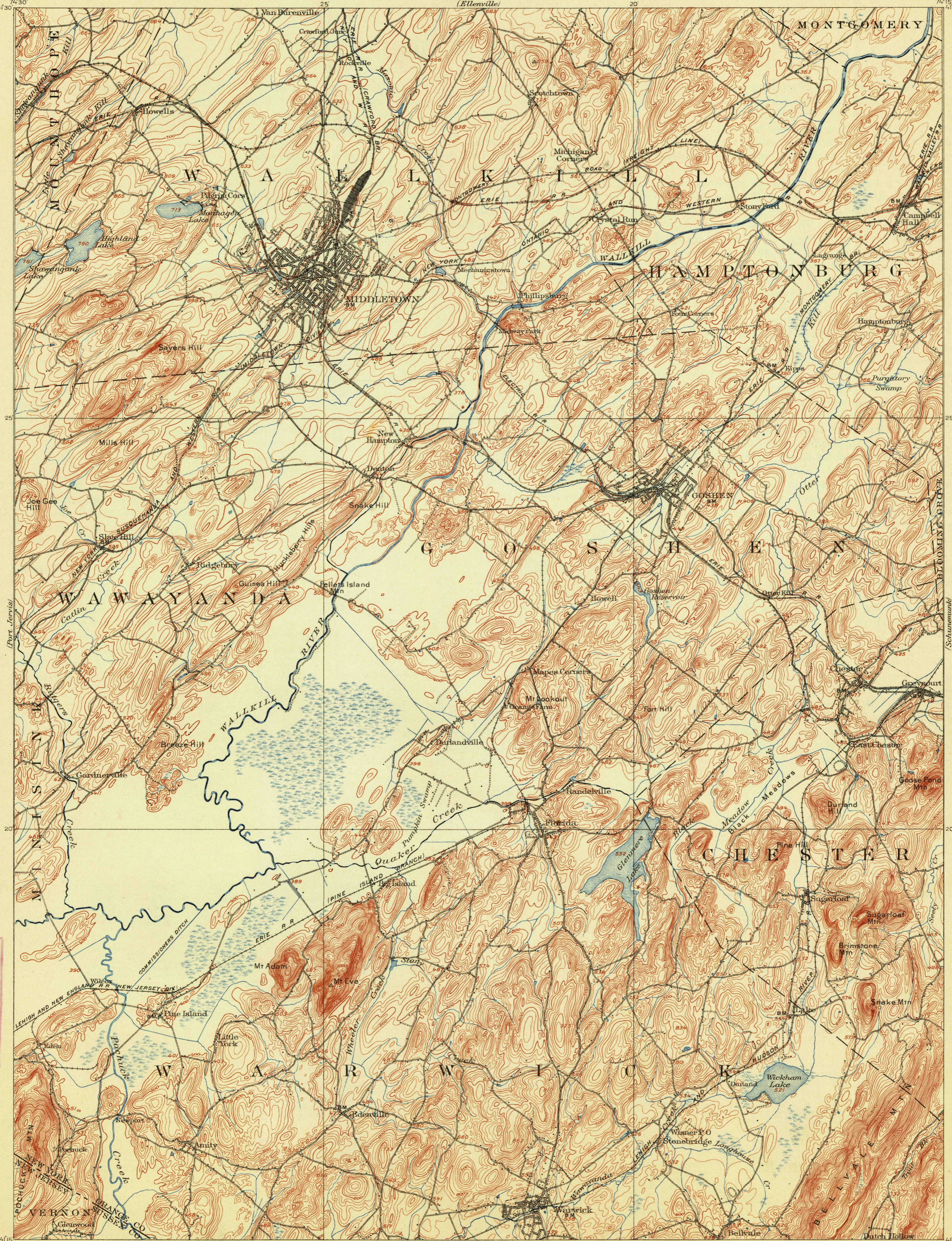


TOPOGRAPHY

STATE OF NEW YORK
REPRESENTED BY THE
STATE ENGINEER AND SURVEYOR
(Ellenville)

U.S. GEOLOGICAL SURVEY
GEORGE OTIS SMITH, DIRECTOR

NEW YORK - NEW JERSEY
GOSHEN QUADRANGLE (Newburg)



U.S.G.S.
FILE COPY
Ed. Div. Topographic Maps

U.S.G.S.
FILE COPY
Ed. Div. Topographic Maps

H.M. Wilson, Geographer.
J.H. Jennings, in charge of section.
Topography by J.H. Jennings and Wm.O. Tufts.
Control by Oscar Jones and J.A. Close.
Surveyed in 1904-1906.

APPROXIMATE MEAN
DECLINATION 1904.

Scale 1:62500
0 1 2 3 4 Miles
0 1 2 3 4 Kilometers
Contour interval 20 feet.
Datum is mean sea level.

Tufts
Jennings

USGS
Historical File
Topographic Division

Edition of Mar. 1908, reprinted June 1913.

3558
GOSHEN, N.Y. - N.J.