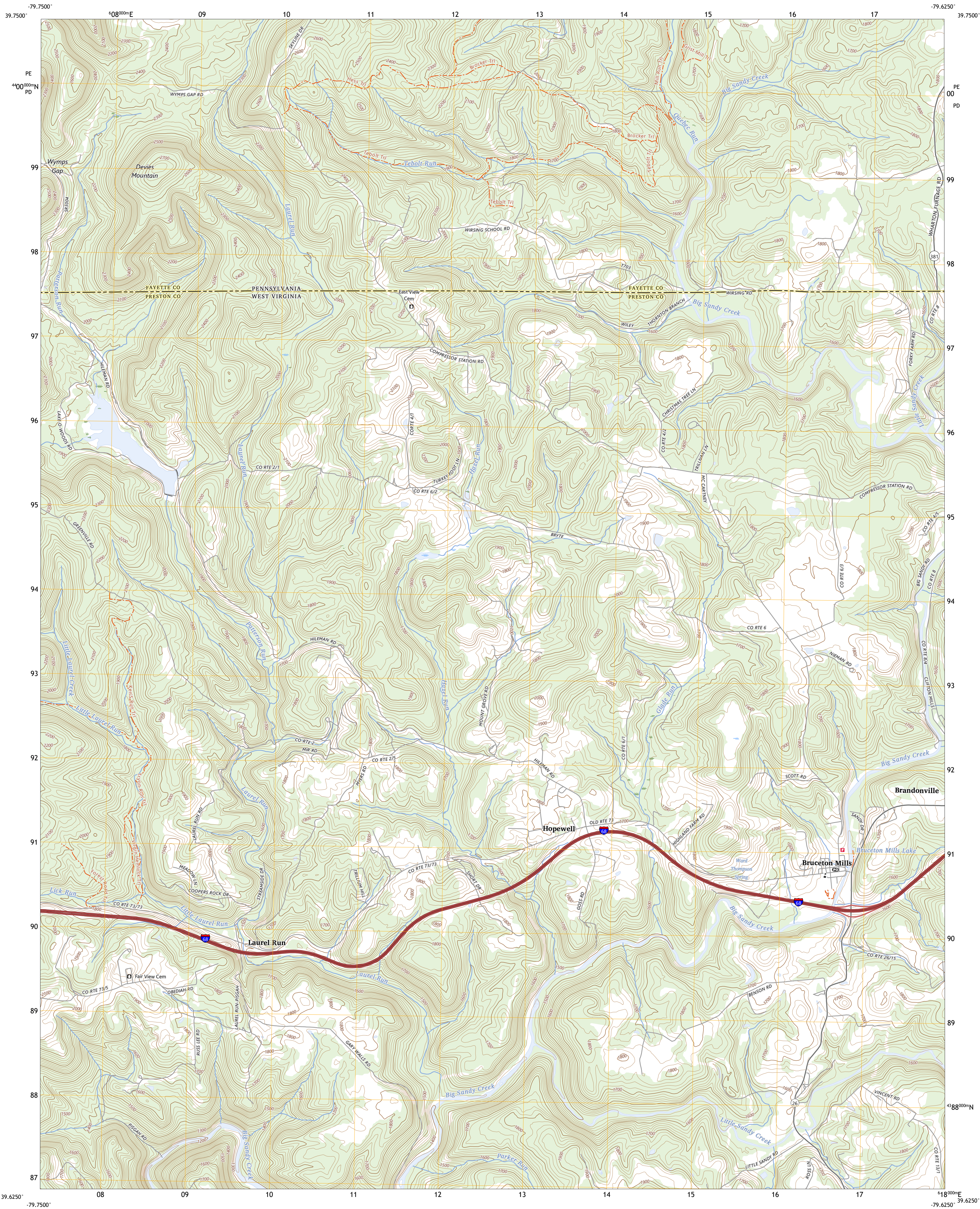




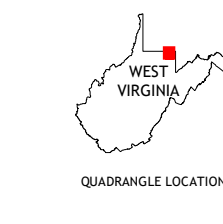
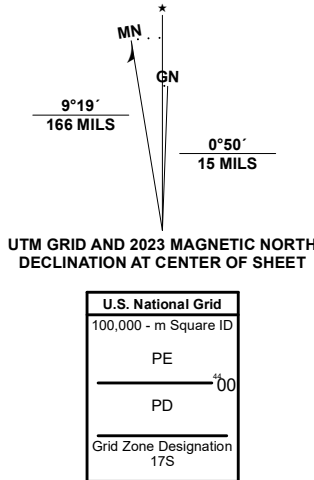
U.S. DEPARTMENT OF THE INTERIOR
U.S. GEOLOGICAL SURVEY



BRUCETON MILLS QUADRANGLE
WEST VIRGINIA - PENNSYLVANIA
7.5-MINUTE SERIES



Produced by the United States Geological Survey
North American Datum of 1983 (NAD83)
World Geodetic System of 1984 (WGS84). Projection and
1 000-meter grid/Universal Transverse Mercator, Zone 17S
This map is not a legal document. Boundaries may be
generalized for this map scale. Private lands within government
reservations may not be shown. Obtain permission before
entering private lands.
Imagery.....NAIP, May 2017 - September 2020
Roads.....U.S. Census Bureau, 2016
Names.....GNIS, 1979 - 2023
Hydrography.....National Hydrography Dataset, 2002 - 2022
Contours.....National Elevation Dataset, 2021
Boundaries.....Multiple sources; see metadata file 2021 - 2022
Wetlands.....FWS National Wetlands Inventory 1976



| | | |
|---|---|---|
| 1 | 2 | 3 |
| 4 | 5 | 6 |
| 7 | 8 | 9 |

| ROAD CLASSIFICATION | |
|---------------------|-----------------|
| Expressway | Local Connector |
| Secondary Hwy | Local Road |
| Ramp | 4WD |
| Interstate Route | US Route |
| | State Route |

BRUCETON MILLS, WV, PA
2023

