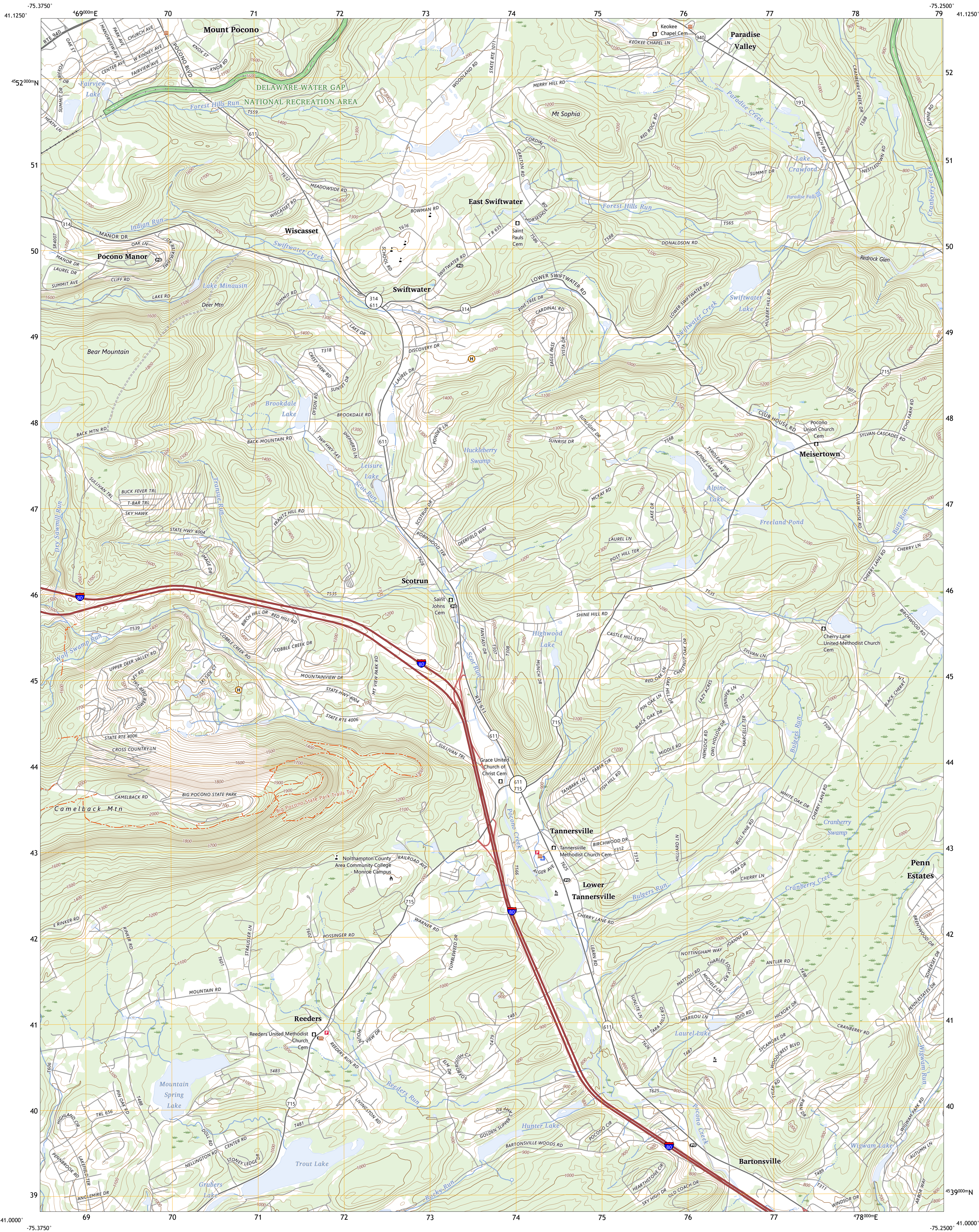




U.S. DEPARTMENT OF THE INTERIOR  
U.S. GEOLOGICAL SURVEY

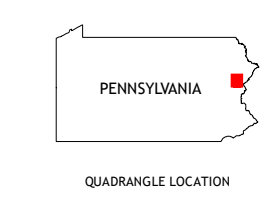
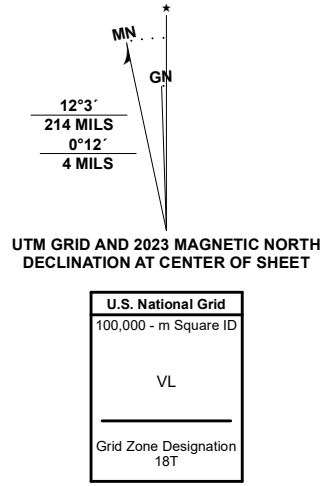


MOUNT POCONO QUADRANGLE  
PENNSYLVANIA - MONROE COUNTY  
7.5-MINUTE SERIES



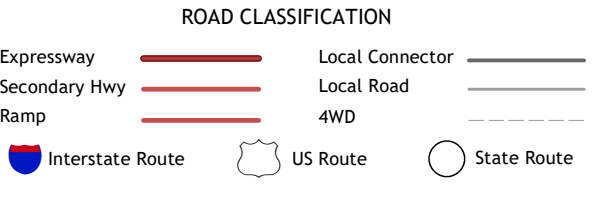
Produced by the United States Geological Survey

North American Datum of 1983 (NAD83)  
World Geodetic System of 1984 (WGS84) - Projection and  
1 000-meter grid/Universal Transverse Mercator, Zone 18T  
This map is not a legal document. Boundaries may be  
generalized for this map scale. Private lands within government  
reservations may not be shown. Obtain permission before  
entering private lands.  
Imagery.....NAIP, June 2017 - December 2017  
Roads.....U.S. Census Bureau, 2016  
Names.....GNIS, 1979 - 2023  
Hydrography.....National Hydrography Dataset, 2001 - 2022  
Contours.....National Elevation Dataset, 2022  
Boundaries.....Multiple sources; see metadata file 2020 - 2022  
Wetlands.....FWS National Wetlands Inventory 1976 - 1981



1	2	3
4	5	6
7	8	9

1 Tobyhanna  
2 Buck Hill Falls  
3 Skytop  
4 Pocono Pines  
5 East Stroudsburg  
6 Brodheadsburg  
7 Saylorburg  
8 Stroudsburg



MOUNT POCONO, PA  
2023

