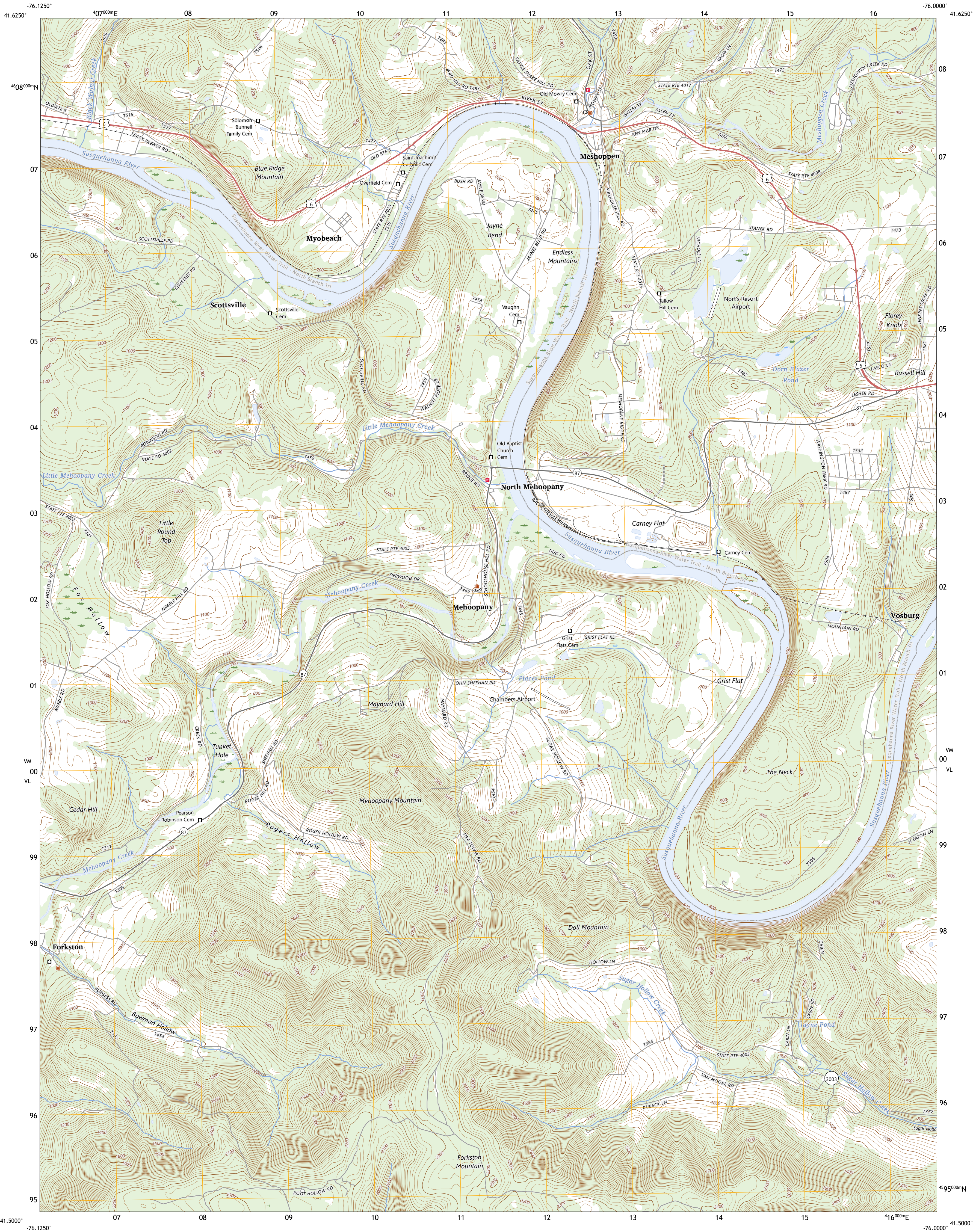




U.S. DEPARTMENT OF THE INTERIOR  
U.S. GEOLOGICAL SURVEY



MESHOPPEN QUADRANGLE  
PENNSYLVANIA - WYOMING COUNTY  
7.5-MINUTE SERIES



Produced by the United States Geological Survey  
North American Datum of 1983 (NAD83)  
World Geodetic System of 1984 (WGS84). Projection and  
1 000-meter grid/Universal Transverse Mercator, Zone 18T  
This map is not a legal document. Boundaries may be  
generalized for this map scale. Private lands within government  
reservations may not be shown. Obtain permission before  
entering private lands.  
Imagery.....NAIP, May 2017 - December 2017  
Roads.....U.S. Census Bureau, 2016  
Names.....GNIS, 1979 - 2023  
Hydrography.....National Hydrography Dataset, 2002 - 2021  
Contours.....National Elevation Dataset, 2022  
Boundaries.....Multiple sources; see metadata file 2021 - 2022  
Wetlands.....FWS National Wetlands Inventory 1976

