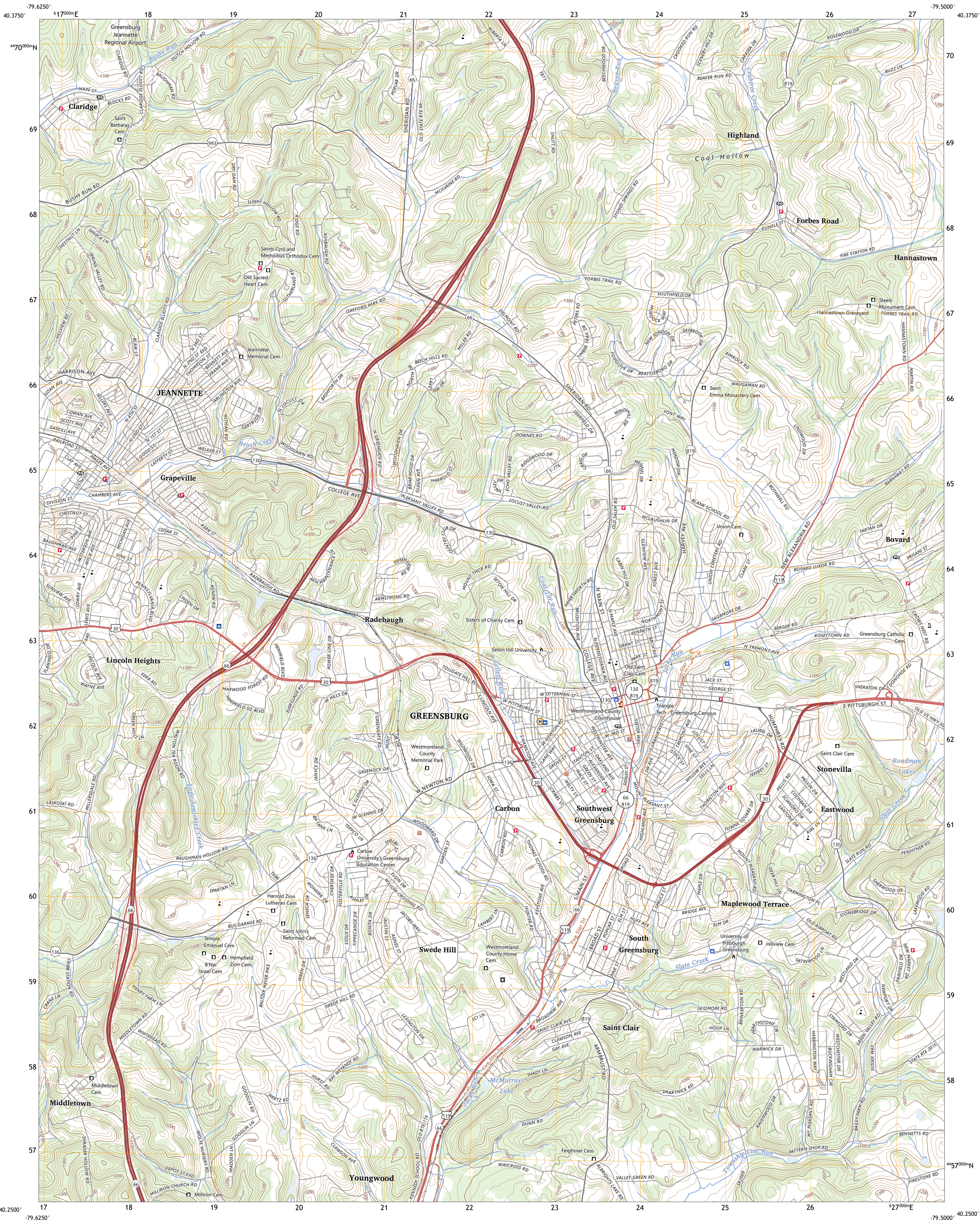




U.S. DEPARTMENT OF THE INTERIOR
U.S. GEOLOGICAL SURVEY



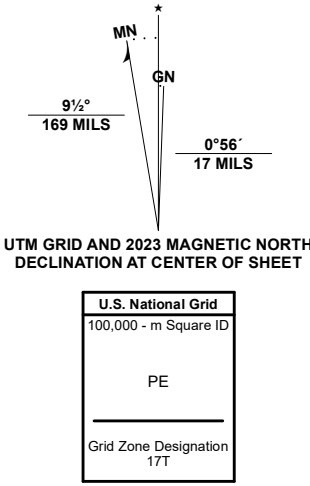
GREENSBURG QUADRANGLE
PENNSYLVANIA - WESTMORELAND COUNTY
7.5-MINUTE SERIES



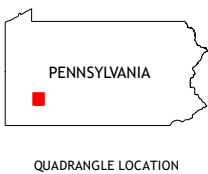
Produced by the United States Geological Survey

North American Datum of 1983 (NAD83)
World Geodetic System of 1984 (WGS84) Projection and
1 000-meter grid/Universal Transverse Mercator, Zone 17T
This map is not a legal document. Boundaries may be
generalized for this map scale. Private lands within government
reservations may not be shown. Obtain permission before
entering private lands.

Imagery.....NAIP, July 2017 - December 2017
Roads.....U.S. Census Bureau, 2016
Names.....GNIS, 1979 - 2023
Hydrography.....National Hydrography Dataset, 2000 - 2022
Contours.....National Elevation Dataset, 2021
Boundaries.....Multiple sources; see metadata file 2022
Wetlands.....FWS National Wetlands Inventory 1977

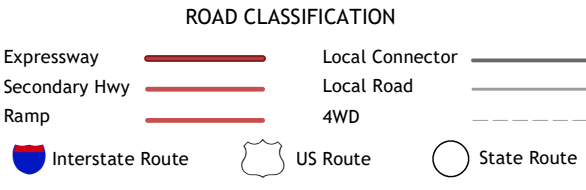


CONTOUR INTERVAL 20 FEET
NORTH AMERICAN VERTICAL DATUM OF 1988
This map was produced to conform with the
National Geospatial Program US Topo Product Standard.



1	2	3
4	5	6
7	8	9

1 Murrysville
2 Slickville
3 Slickville
4 Irwin
5 Lattrobe
6 Smithton
7 Mount Pleasant
8 Hammoth



GREENSBURG, PA
2023

