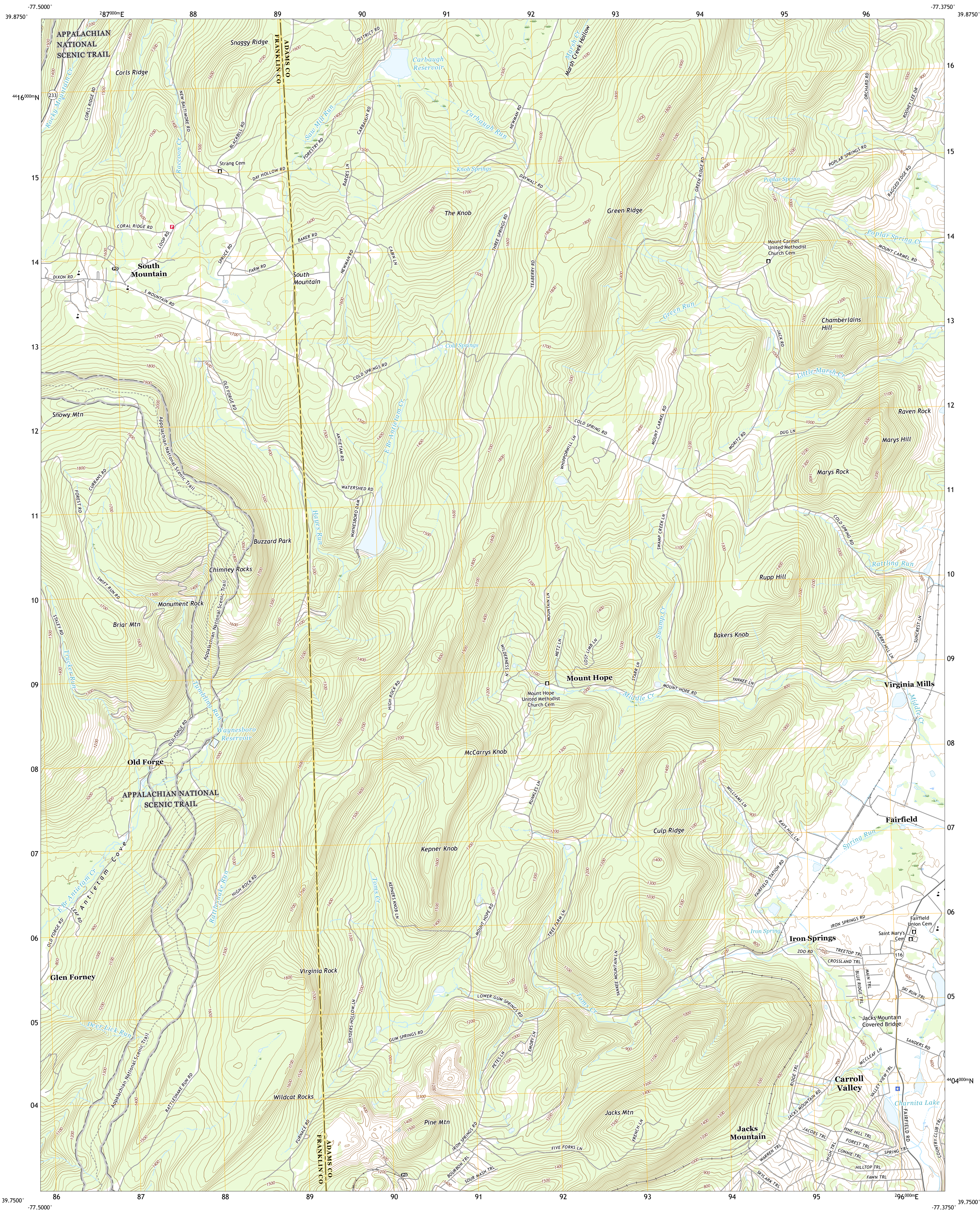




U.S. DEPARTMENT OF THE INTERIOR  
U.S. GEOLOGICAL SURVEY



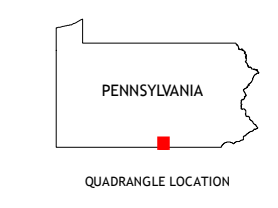
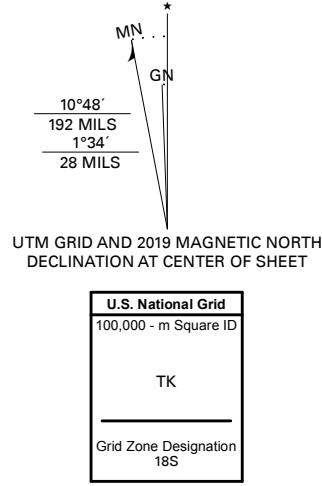
IRON SPRINGS QUADRANGLE  
PENNSYLVANIA  
7.5-MINUTE SERIES



Produced by the United States Geological Survey

North American Datum of 1983 (NAD83)  
World Geodetic System of 1984 (WGS84). Projection and  
1 000-meter grid/Universal Transverse Mercator, Zone 18S  
This map is not a legal document. Boundaries may be  
generalized for this map scale. Private lands within government  
reservations may not be shown. Obtain permission before  
entering private lands.

Imagery.....NAIP, May 2017 - December 2017  
Roads.....U.S. Census Bureau, 2016  
Names.....GNIS, 1979 - 2018  
Hydrography.....National Hydrography Dataset, 2001 - 2019  
Contours.....National Elevation Dataset, 2019  
Boundaries.....Multiple sources; see metadata file 2017 - 2018  
Wetlands.....FWS National Wetlands Inventory 1982



1	2	3
4	5	6
7	8	9

ROAD CLASSIFICATION		
Expressway	Local Connector	
Secondary Hwy	Local Road	
Ramp	4WD	
Interstate Route	US Route	State Route

IRON SPRINGS, PA  
2019

