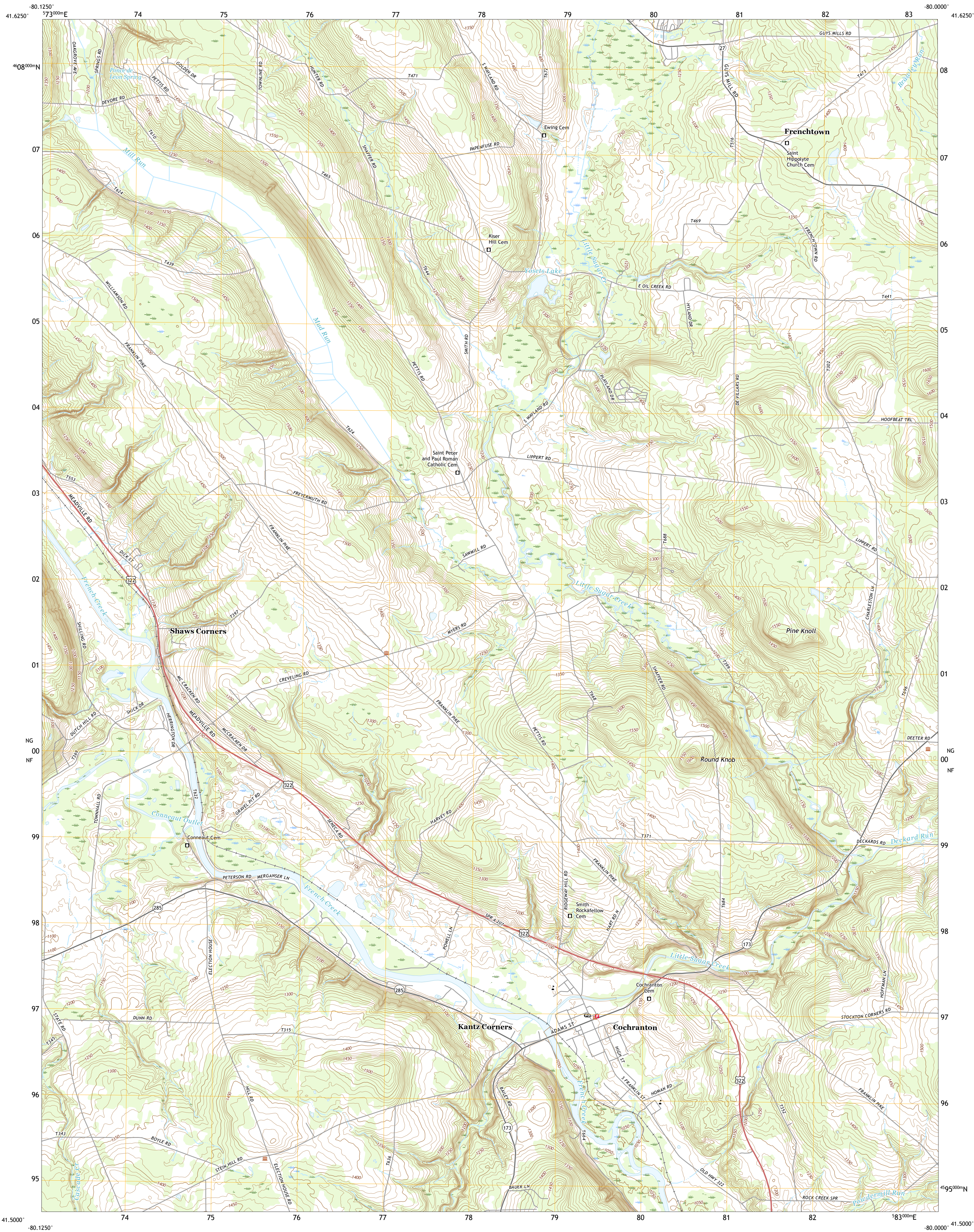




U.S. DEPARTMENT OF THE INTERIOR  
U.S. GEOLOGICAL SURVEY



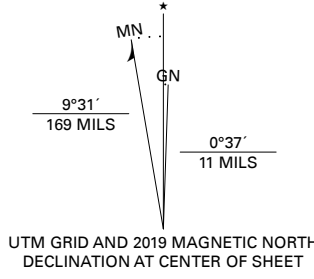
COCHRANTON QUADRANGLE  
PENNSYLVANIA - CRAWFORD COUNTY  
7.5-MINUTE SERIES



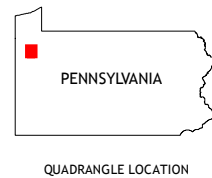
Produced by the United States Geological Survey

North American Datum of 1983 (NAD83)  
World Geodetic System of 1984 (WGS84). Projection and  
1 000 meter grid/Universal Transverse Mercator, Zone 17T  
This map is not a legal document. Boundaries may be  
generalized for this map scale. Private lands within government  
reservations may not be shown. Obtain permission before  
entering private lands.

Imagery.....NAIP, May 2017 - December 2017  
Roads.....U.S. Census Bureau, 2016  
Names.....GNIS, 1979 - 2019  
Hydrography.....National Hydrography Dataset, 2004 - 2019  
Contours.....National Elevation Dataset, 2010  
Boundaries.....Multiple sources; see metadata file 2017 - 2018  
Wetlands.....FWS National Wetlands Inventory 1977 - 2008



CONTOUR INTERVAL 10 FEET  
NORTH AMERICAN VERTICAL DATUM OF 1988  
This map was produced to conform with the  
National Geospatial Program US Topo Product Standard, 2011.  
A metadata file associated with this product is draft version 0.6.18



1	2	3
4	5	6
7	8	9

- 1 Meadville
- 2 Blooming Valley
- 3 Townville
- 4 Geneva
- 5 Sugar Lake
- 6 Hadley
- 7 New Lebanon
- 8 Utica

ROAD CLASSIFICATION	
Expressway	Local Connector
Secondary Hwy	Local Road
Ramp	4WD
Interstate Route	US Route
	State Route

COCHRANTON, PA  
2019

