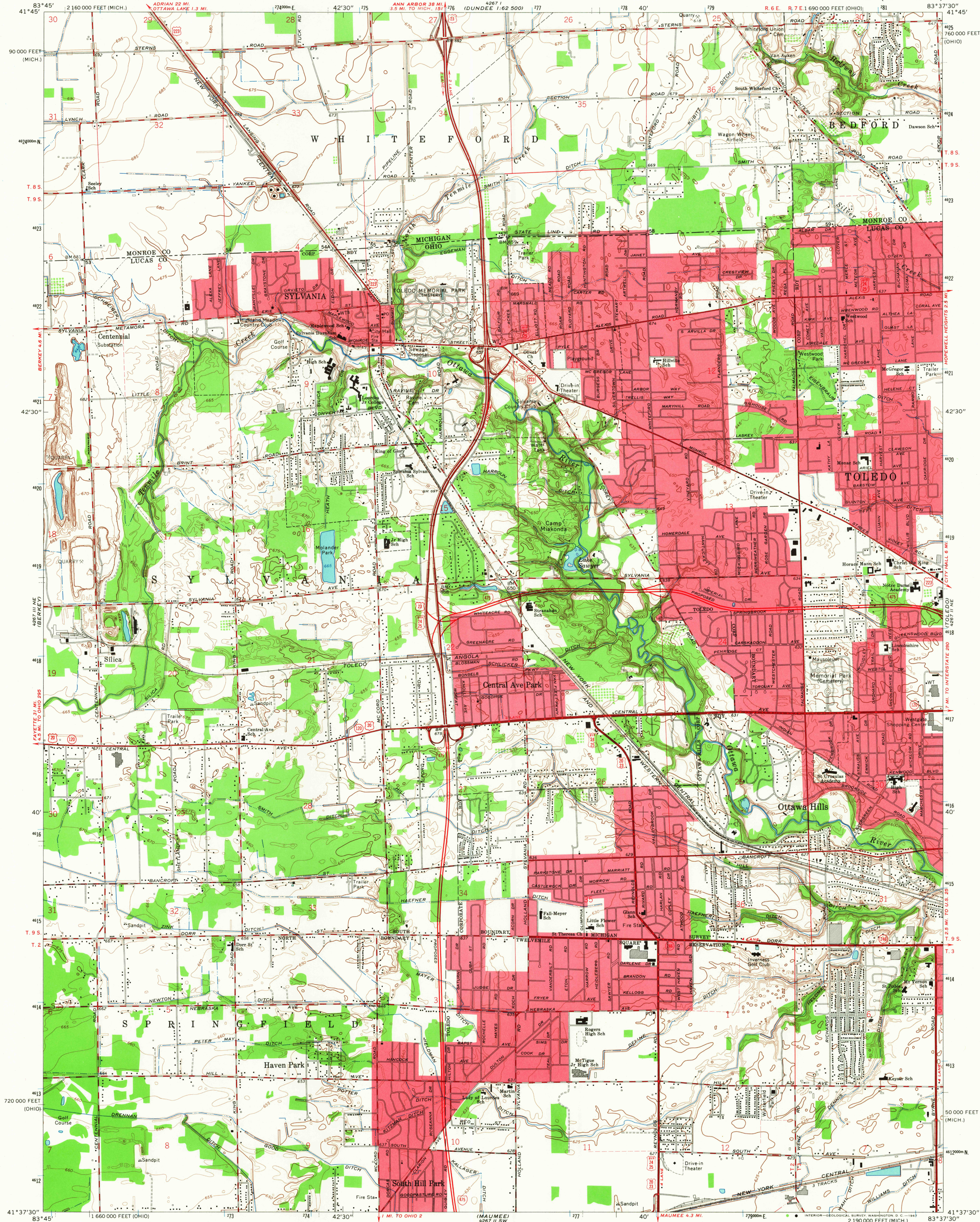


UNITED STATES  
DEPARTMENT OF THE INTERIOR  
GEOLOGICAL SURVEY

SYLVANIA QUADRANGLE  
OHIO-MICHIGAN  
7.5 MINUTE SERIES (TOPOGRAPHIC)



Maped, edited, and published by the Geological Survey  
Revised in cooperation with State of Ohio agencies

Control by USGS and USC&GS

Topography by planetable surveys 1934. Revised 1965

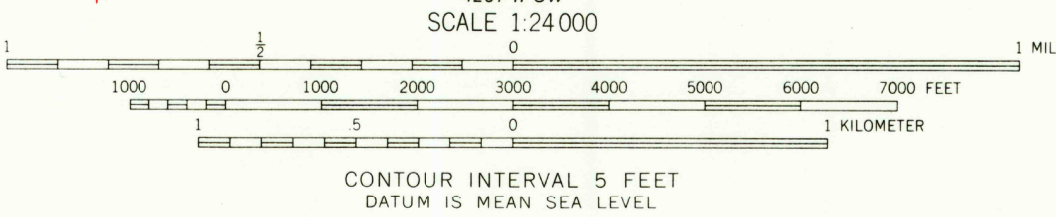
Polyconic projection. 1927 North American datum  
10,000-foot grids based on Ohio coordinate system, north zone, and  
Michigan coordinate system, south zone  
1000-meter Universal Transverse Mercator grid ticks,  
zone 17, shown in blue

Fine red dashed lines indicate selected fence and field lines where  
generally visible on aerial photographs. This information is unchecked

Red tint indicates areas in which only landmark buildings are shown

Land lines within the Michigan Survey  
based on the Michigan Meridian

UTM GRID AND 1965 MAGNETIC NORTH  
DECLINATION AT CENTER OF SHEET



USGS  
Historical File  
Topographic Division



U.S.G.S.

SYLVANIA, OHIO-MICH.

N4137.5-W8337.5/7.5

1965

AMS 4267 11 NW-SERIES V852

ROAD CLASSIFICATION  
Heavy-duty ——— Light-duty ———  
Medium-duty ——— Unimproved dirt ———  
Interstate Route U. S. Route State Route

4185

MAR 28 1967