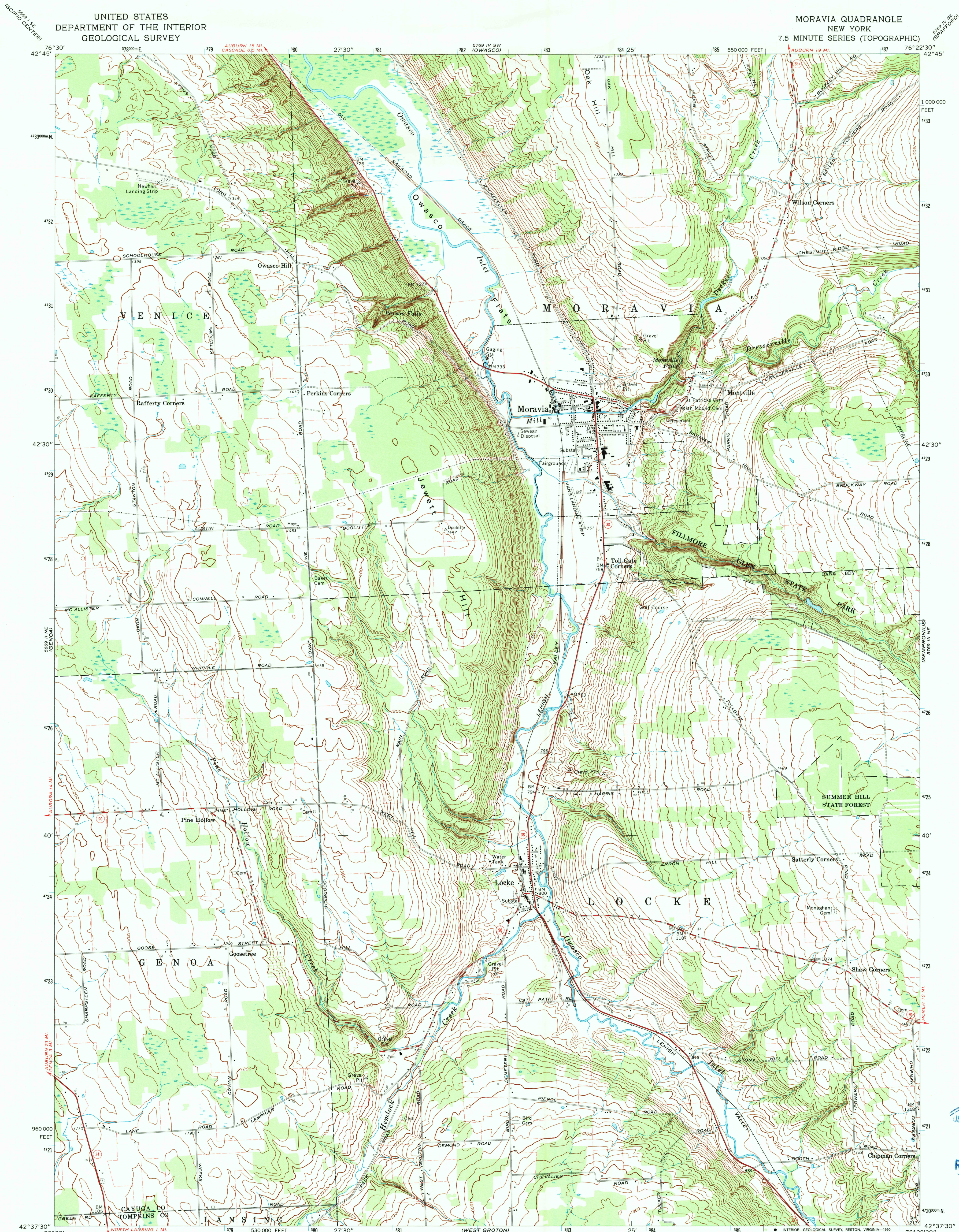
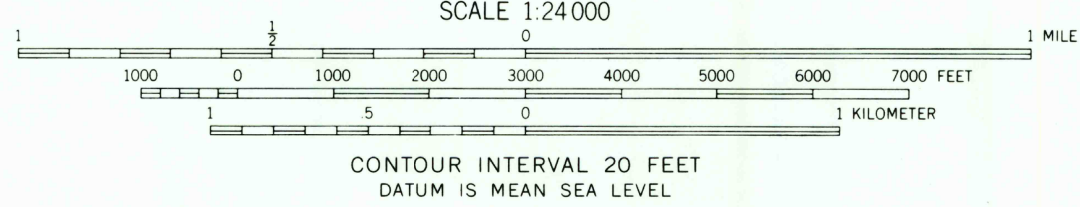
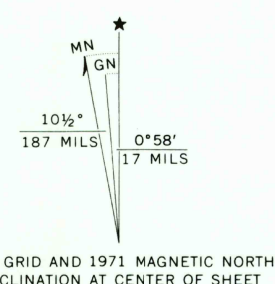


UNITED STATES
DEPARTMENT OF THE INTERIOR
GEOLOGICAL SURVEY

MORAVIA QUADRANGLE
NEW YORK
7.5 MINUTE SERIES (TOPOGRAPHIC)



Map by the Army Map Service
Edited and published by the Geological Survey
Control by USGS, USC&GS, and Tennessee Valley Authority
Topography by photogrammetric methods from aerial photographs
taken 1942. Field checked 1943. Revised by the Geological Survey
from aerial photographs taken 1969. Field checked 1971
Polyconic projection. 1927 North American datum
10,000-foot grid based on New York coordinate system, central zone
1000-meter Universal Transverse Mercator grid ticks,
zone 18, shown in blue
Fine red dashed lines indicate selected fence and field lines where
generally visible on aerial photographs. This information is unchecked



ROAD CLASSIFICATION

Primary highway, hard surface	Light-duty road, hard or improved surface
Secondary highway, hard surface	Unimproved road
Interstate Route	U.S. Route
	State Route

THIS MAP COMPLIES WITH NATIONAL MAP ACCURACY STANDARDS
FOR SALE BY U.S. GEOLOGICAL SURVEY, DENVER, COLORADO 80225
OR RESTON, VIRGINIA 22092
A FOLDER DESCRIBING TOPOGRAPHIC MAPS AND SYMBOLS IS AVAILABLE ON REQUEST

Map photocopied 1976
No major culture or drainage changes observed

MORAVIA, N. Y.
N4237.5—W7622.5/7.5

1971
PHOTOINSPECTED 1976
AMS 5769 III NW-SERIES 7821

USGS NMD HISTORICAL MAP
MAY 13 1991
REC'D FILE COPY