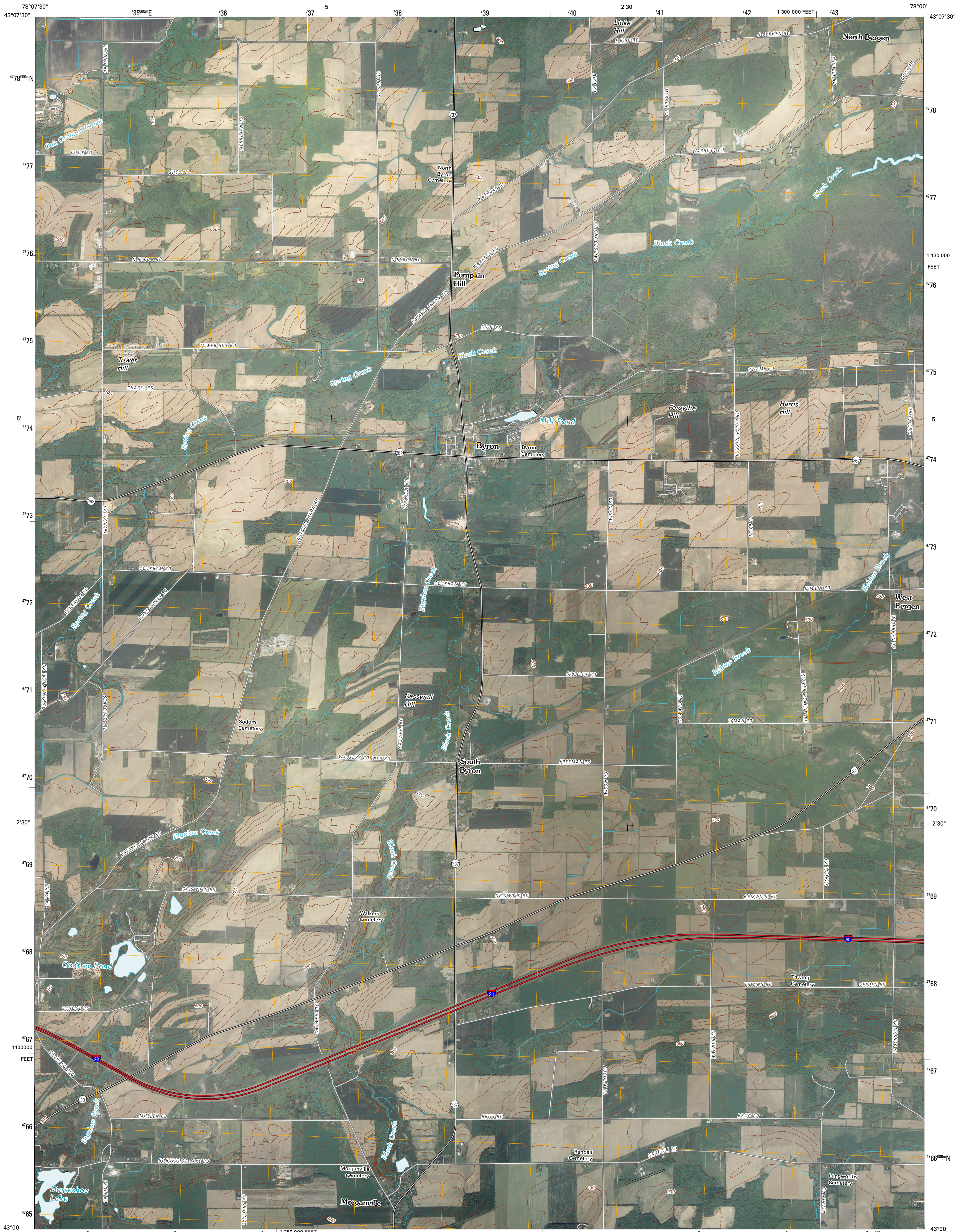




U.S. DEPARTMENT OF THE INTERIOR
U. S. GEOLOGICAL SURVEY



BYRON QUADRANGLE
NEW YORK
7.5-MINUTE SERIES



Produced by the United States Geological Survey
North American Datum of 1983 (NAD83)
World Geodetic System of 1984 (WGS84). Projection and
1 000-meter grid: Universal Transverse Mercator, Zone 17T
10 000-foot ticks: New York Coordinate System of 1983
(west zone)

Imagery:.....NAIP, May 2008
Roads:.....US Census Bureau TIGER data
with limited USGS updates, 2006
Names:.....GNIS, 2008
Hydrography:.....National Hydrography Dataset, 2008
Contours:.....National Elevation Dataset, 1998

UTM GRID AND 2010 MAGNETIC NORTH
DECLINATION AT CENTER OF SHEET

U.S. National Grid
100,000-m Square ID
QH
Grid Zone Designation
17T

SCALE 1:24 000

1 000 0 1000 2000
KILOMETERS
1 000 0 1000 2000
METERS
1 000 0 1000 2000
MILES
1000 0 1000 2000 3000 4000 5000 6000 7000 8000 9000 10000
FEET

CONTOUR INTERVAL 10 FEET

This map was produced to conform with version 0.5.10 of the
draft USGS Standards for 7.5-Minute Quadrangle Maps.
A metadata file associated with this product is also draft version 0.5.10



QUADRANGLE LOCATION		
Allison	Holley	Brookport
Batavia North	Byron	Churchville
Batavia South	Stafford	Le Roy

ADJOINING 7.5 QUADRANGLES

ROAD CLASSIFICATION

Interstate Route
US Route
Ramp
State Route
Local Road
4WD
Interstate Route
US Route
State Route

BYRON, NY
2010