

## Tutorials

### How to Connect to Map Services



In this tutorial, you will learn how to connect to a Map Service using ArcMap.

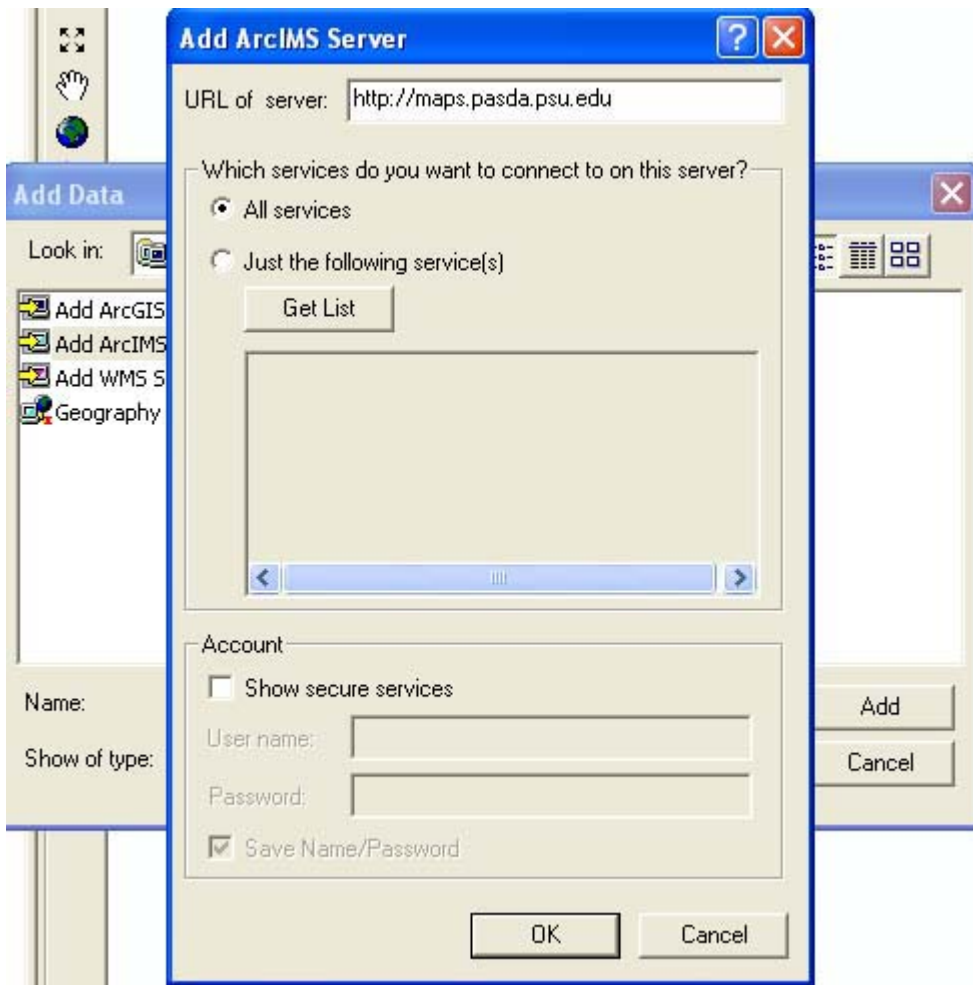
**Step 1.** Open ArcMap and click the **Add Data** button.



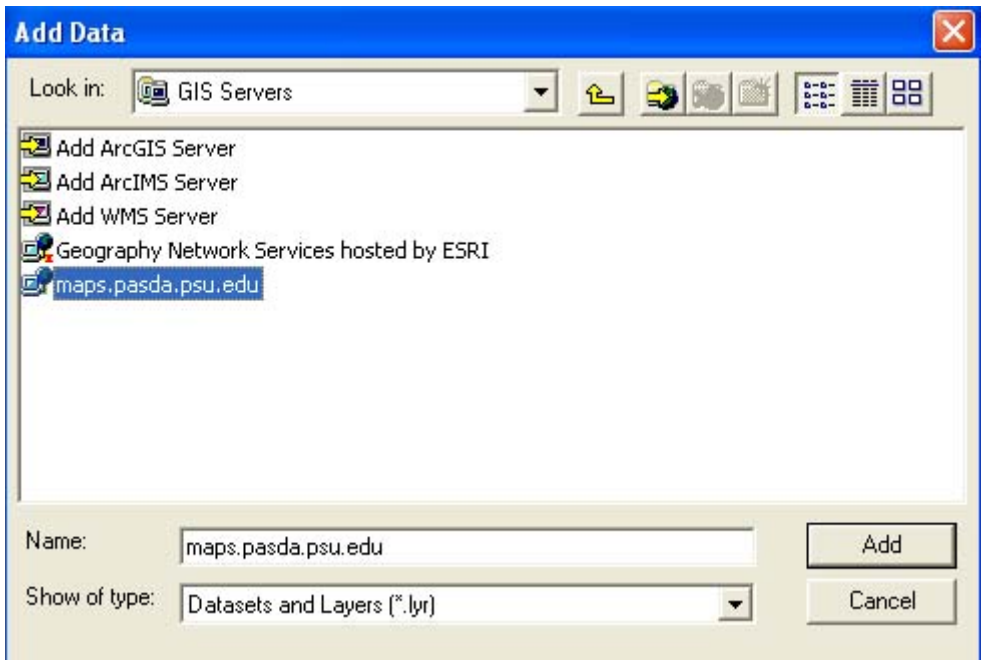
**Step 2.** Click on **GIS Servers** then click **Add ArcIMS Server**



**Step 3.** Type <http://maps.pasda.psu.edu> in to the **URL of Server** box - leave the rest of the default settings.



**Step 4.** Your new ArcIMS Server has been added. Double click server name to view the available map services on this server.



**Step 5.** Double click any service name you wish. The service you chose will automatically add to your ArcMAP view.

